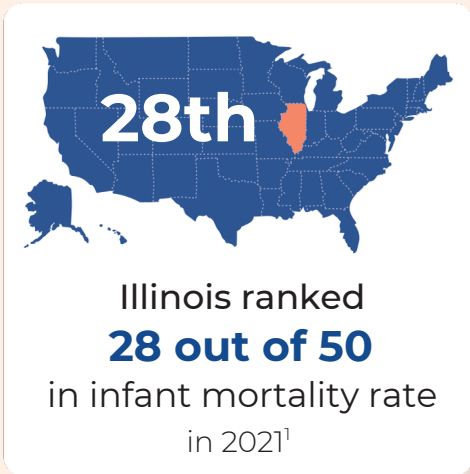


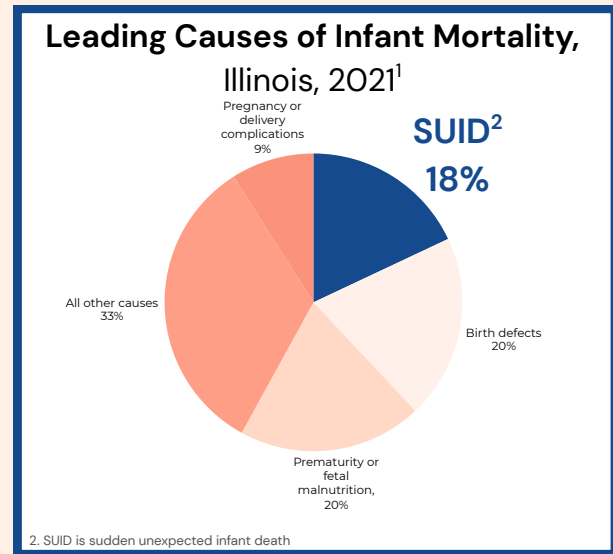
Equity and Safe Sleep for Infants (ESSI)



The Problem



In Illinois, **Black infants are 4 times more likely to die** than White infants from Sudden Unexpected Infant Death (SUID)¹



Equity and Safe Sleep for Infants Initiative

What is ESSI? Building upon the foundational work of the ILPQC Birth Equity initiative, ESSI promotes neonatal equity, address racial and social inequities, and seeks to reduce neonatal health disparities in **sudden unexpected infant death (SUID)** related to the sleep environment.

AIMS OF THE ESSI INITIATIVE

Greater than **70%**

Illinois birthing and children's

HOSPITALS PARTICIPATING IN THE ESSI INITIATIVE

Greater than **80%**

infants discharged with a

COMPLETED ESSI BUNDLE

Awareness: Parents understand safe sleep environment

Readiness: SDoH screening, linkage to resources complete

Transfer of Care: Communication to primary care provider completed.

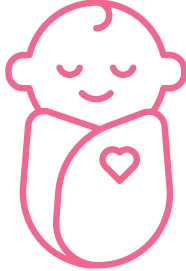
1. Illinois Infant Mortality Report, Illinois Department of Public Health (2024).

Equity and Safe Sleep for Infants (ESSI)

Accomplishments to date



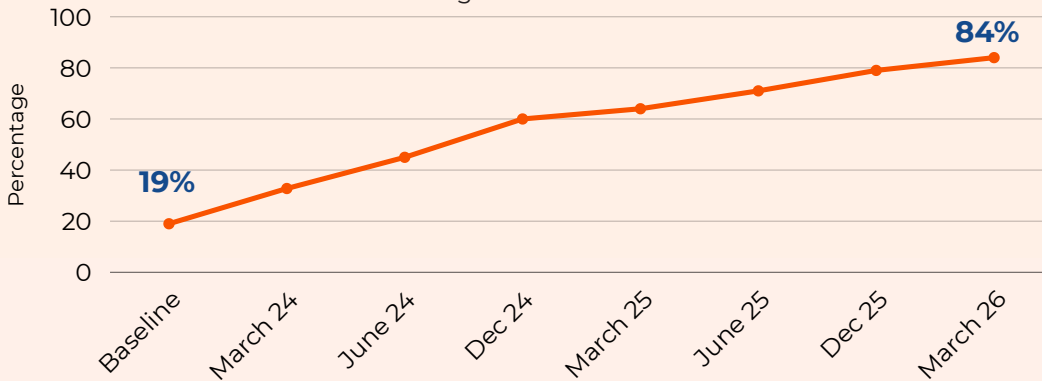
88%
of birthing hospitals participating




90%
Infants documented in a safe sleep environment in the hospital

Improving Care for Babies through Better Screening for Social Needs

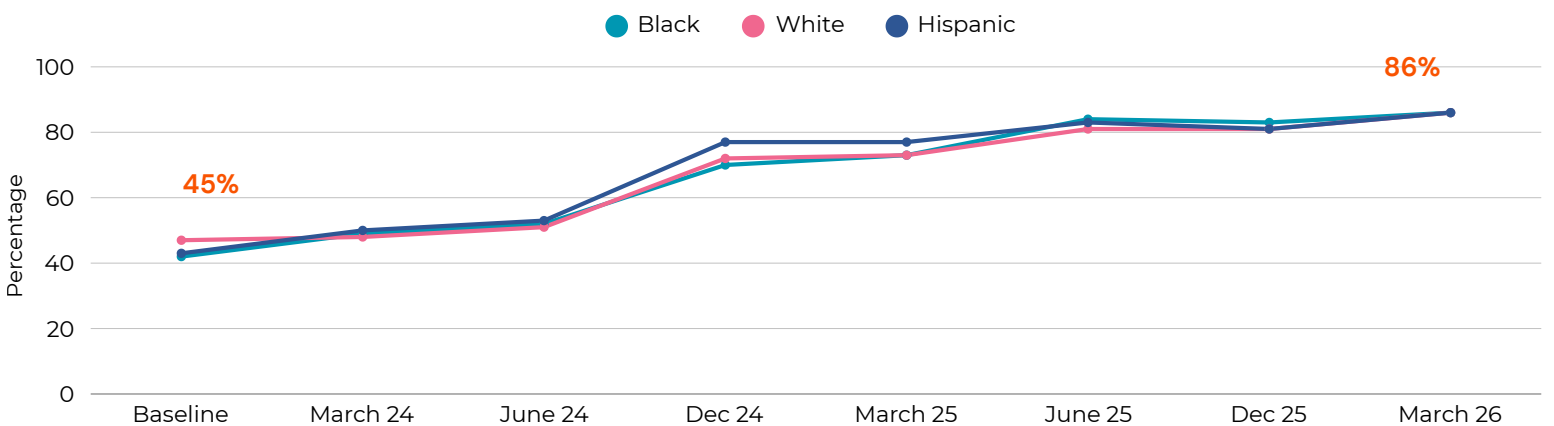
SDOH screening documentation in infant's chart



92% 

of families with identified needs linked to resources

Equitably Engaging Parents and Caregivers in Safe Sleep Conversations



Documentation of a conversation with parents or caregivers about adjustment to life with a newborn and safe sleep by mothers' race and ethnicity



Illinois Perinatal Quality Collaborative (ILPQC) is a statewide network of clinicians, nurses, hospitals, patients, public health leaders, and policymakers that aims to equitably improve outcomes and reduce disparities for mothers and babies. ILPQC provides opportunities for collaborative learning, rapid-response data display, and quality improvement (QI) support to achieve the initiative aims in each participating hospital.

Thank you to our **FUNDERS:**

- Illinois Department of Public Health
- Illinois Department of Human Services