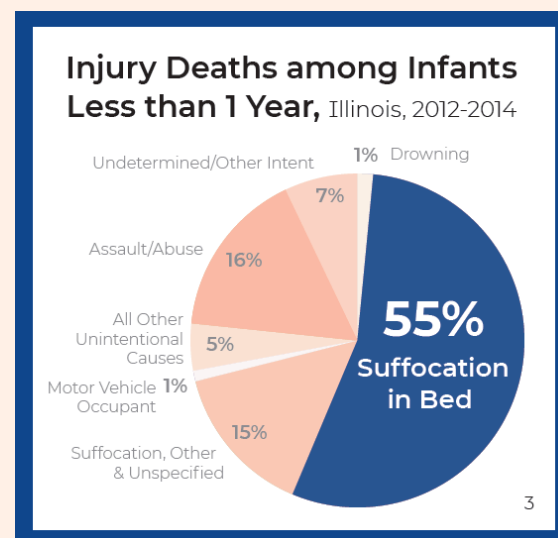
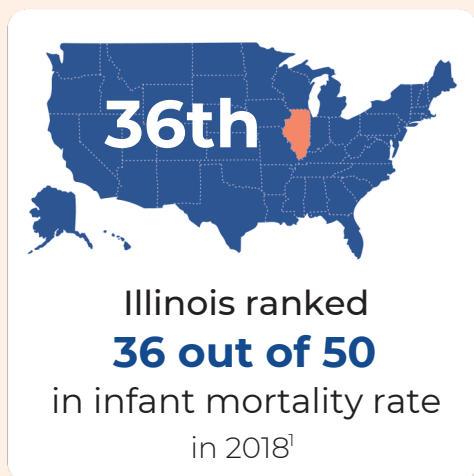


# Equity and Safe Sleep for Infants (ESSI)



## The Problem



## Equity and Safe Sleep for Infants Initiative

**What is ESSI?** Building upon the foundational work of the ILPQC Birth Equity initiative, ESSI promotes neonatal equity, address racial and social inequities, and seeks to reduce neonatal health disparities in sudden unexpected infant death (SUID) related to the sleep environment.

### AIMS OF THE ESSI INITIATIVE

Greater than **70%**

Illinois birthing and children's

**HOSPITALS  
PARTICIPATING IN  
THE ESSI INITIATIVE**

Greater than **80%**

infants discharged with a

**COMPLETED ESSI BUNDLE**

**Awareness:** Parents understand safe sleep environment

**Readiness:** SDoH screening, linkage to resources complete

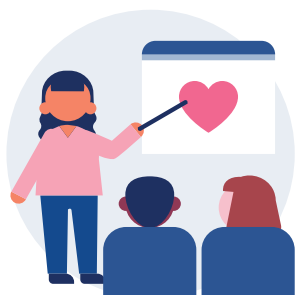
**Transfer of Care:** Communication to primary care provider completed.

# Equity and Safe Sleep for Infants

## ILLINOIS HOSPITALS PROMOTING EQUITY AND SAFE SLEEP

**86 ILPQC Hospitals are participating in the ESSI initiative and working on implementation of the “7 Es of ESSI”**

### EDUCATE



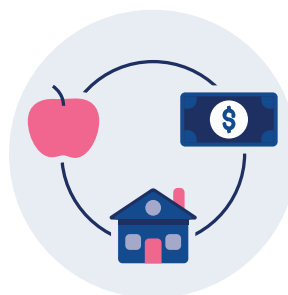
healthcare professionals on providing equitable and respectful care

### ESTABLISH



hospital leadership commitment to an inclusive clinical environment

### EVALUATE



for social determinants of health needs and link to needed resources

### ELEVATE



parent voices and stories in quality improvement (QI) work

### EMPOWER



parents, caregivers and healthcare professionals to participate in respectful safe sleep conversations

### ENGAGE



community organizations and outpatient providers

### EXPAND



race and ethnicity data collection strategies and processes to improve health outcomes for all infants



Illinois Perinatal Quality Collaborative (ILPQC) is a statewide network of clinicians, nurses, hospitals, patients, public health leaders, and policymakers that aims to equitably improve outcomes and reduce disparities for mothers and babies. ILPQC provides opportunities for collaborative learning, rapid-response data display, and quality improvement (QI) support to achieve the initiative aims in each participating hospital.

Thank you to our **FUNDERS:**

- Illinois Department of Public Health
- Illinois Department of Human Services
- Centers for Disease Control and Prevention
- Health Resources and Services Administration

ILPQC developed ESSI with **KEY STAKEHOLDERS:**

- ESSI Planning Group
- Neonatal Advisory Workgroup
- Community Advisory Board

[www.ilpqc.org/ESSI](http://www.ilpqc.org/ESSI)

FALL 2024