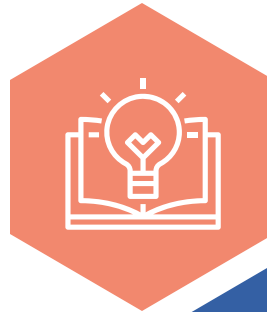


# PMH Initiative 6 Key Systems Changes

## Provider Education & Engagement

Educate all providers on screening & treating patients with PMH conditions using a patient centered, trauma-informed care approach.



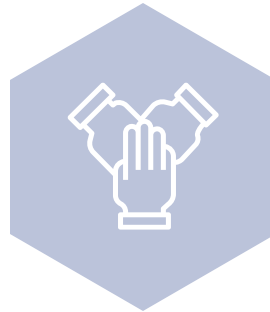
## Optimizing Treatment

Establish processes for assessing & treating PMH conditions in obstetric and other care locations.



## Patient and Community Education & Engagement

Educate patients on PMH conditions, warning signs and hotline resources. Collaborate with patients & communities and identify community-based resources.



## Key Systems Changes

## Linkage to Resources

Enhance linkage to mental health services for improved care coordination and innovations to reduce barriers to access.



## Screening & Assessment

Enhance screening of PMH conditions in perinatal period.



## Optimize SUD Care

Continue optimizing care of people with SUD through assessment & linkage to resources (DOPP, MAR NOW).



# PMH Initiative Aims



≥70% of IL birthing hospitals actively participating in initiative



≥70% of teams achieving key strategies



>70% of pregnant persons with PMH conditions receive treatment (pharmacotherapy and/or behavioral health therapy) and are connected to resources/services prenatally or by delivery discharge