

5 Steps to Engaging a Parent Partner



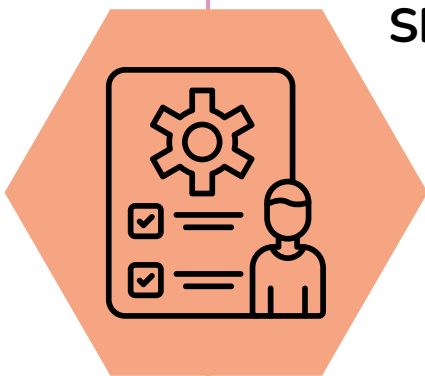
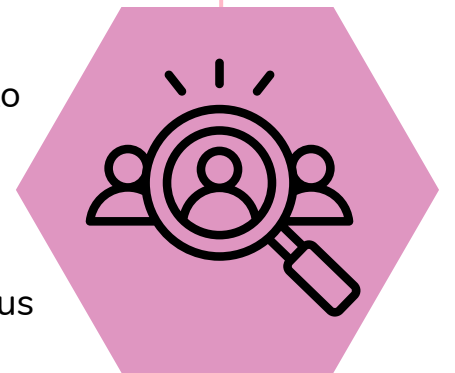
Identify a parent partner to join your QI team

There are several ways you can identify a parent partner. Hold a Respectful Care Breakfast and meet potential parent partners. Ask clinical team members who work with parents to think about prior parents they can ask if they are interested in using their experiences to help improve care.

- Examples include:**
 - Social Workers
 - Nurses
 - Therapists
 - Child Life Specialists
 - Neonatologists
 - Pediatricians
 - Lactation Consultants

Once you've identified a parent partner, the next step is to ask

- Identify the team member who knows the parent - they're the best person to ask if the parent is interested in possibly being a parent partner.
 - Ask the parent if they want to work with your QI team to be a parent voice and share their perspective to help improve care!
 - "Would you be interested in working with our ESSI/QI team to help us improve care for birthing patients and families at our hospital?"



Share ideas of parent partner engagement

- How might a parent partner engage in ESSI work? Potential activities include:
 - Help develop patient-facing materials
 - Assist in planning Respectful Care Breakfasts
 - Providing a patient perspective on patient-facing education
 - Assist in reviewing current policies with an equity lens

Parent partner onboarding

- It's critical that you appropriately onboard your parent partner.
 - Put your parent partner in contact with your QI team
 - Go over steps that are specific to your hospital in onboarding
 - Link parent partners to Momma's Voices community and Patient Family Partner training (Scan QR Code)



Continued partnership

- Determine a regular (monthly or quarterly) meeting time to check-in with parent partner.
 - Provide updates on specific projects
 - Share lessons learned
- Invite your parent partner to QI team meetings.
 - Make sure they have a specific contact
 - Ask how they want to contribute, ask for their regular feedback on how it is going
- How can you reimburse their valuable time?
 - Payment, meal with meetings, parking, gift bag or other options to show you value their time and expertise