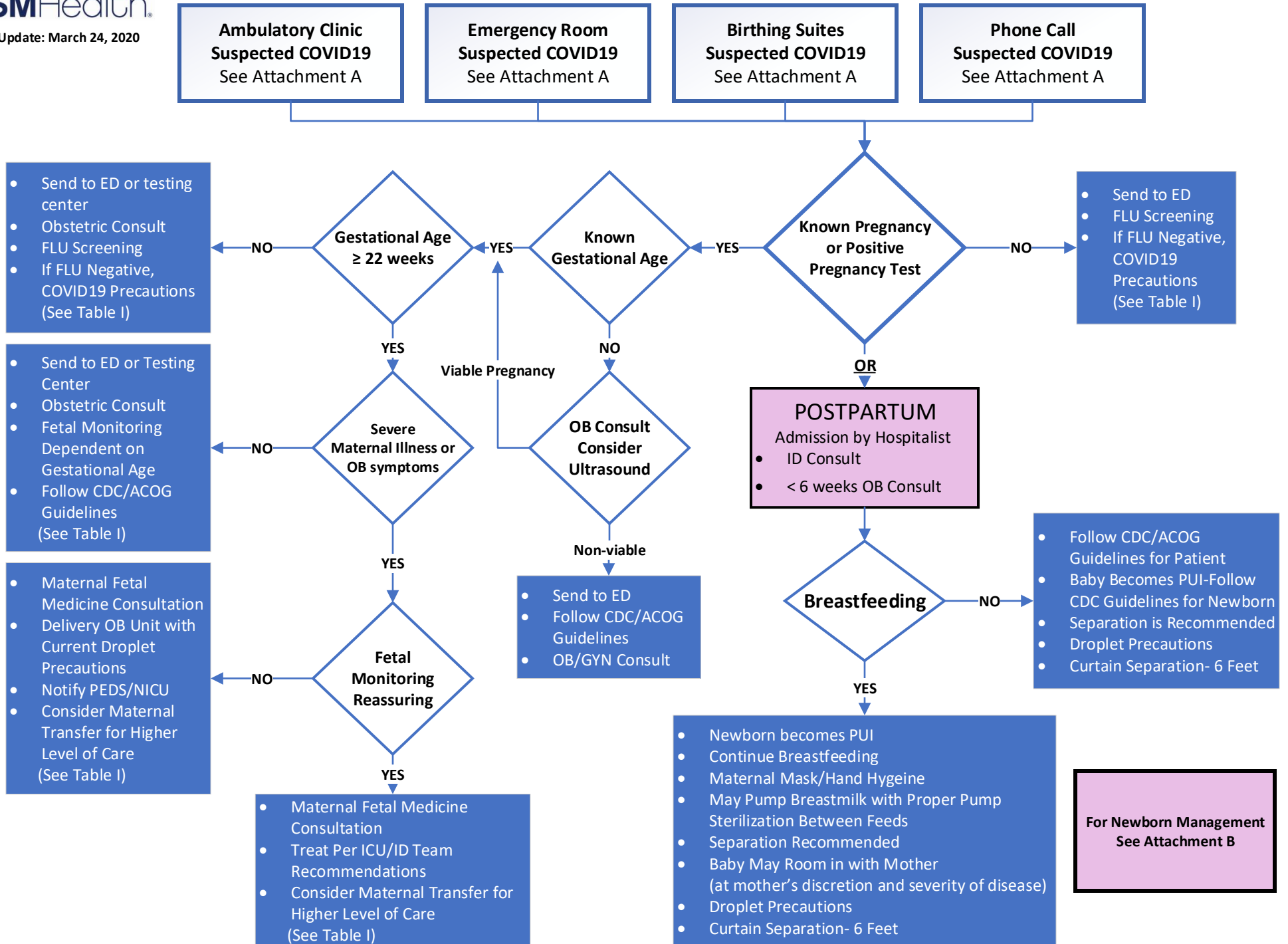


COVID19 Pregnancy Workflow

Recommend Suspected COVID19 Patients Not be Initially Evaluated Through Birthing Suites or OB Triage





COVID19 Pregnancy Workflow

Recommend Suspected COVID19 Patients Not be Initially Evaluated Through Birthing Suites or OB Triage

Last Update: March 24, 2020

Ambulatory Clinic Suspected COVID19

- COVID19 Screening
- Consider Virtual Screening or Testing Center
- FLU Screening
- If FLU Screening Negative, COVID19 Precautions

***ED Option Secondary to Other Offsite Options-Regional Specific**

Emergency Room Suspected COVID19

- COVID19 Screening
- FLU Screening
- If FLU Negative, COVID19 Precautions
- Determine if OB Consult Necessary

Birthing Suites Suspected COVID19

- COVID19 Screening
- FLU Screening
- If FLU Negative, COVID19 Precautions
- Send to ED
- Consider Testing Center

Phone Call Suspected COVID19

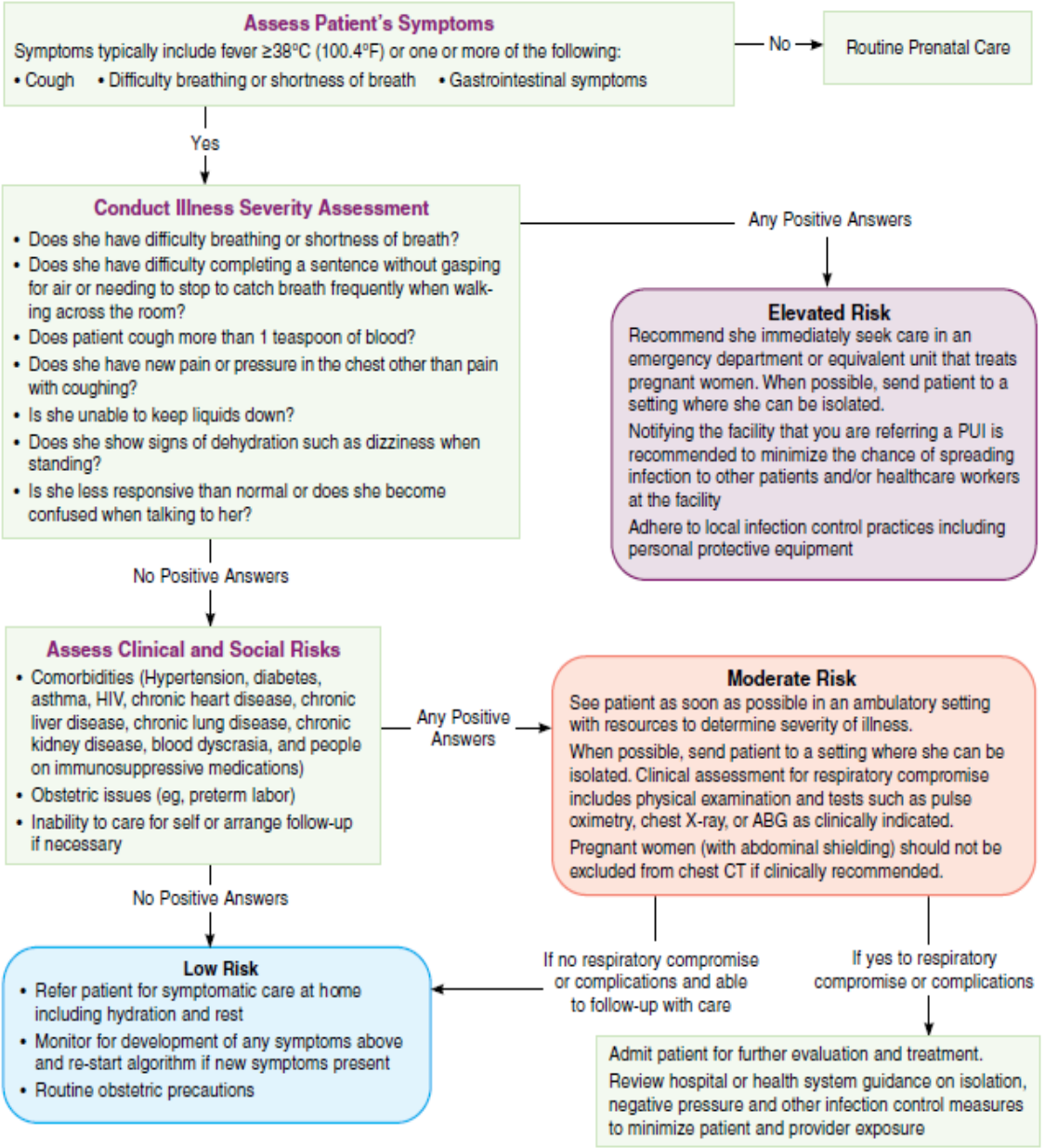
- Refer for Virtual Screening (www.ssmhealth.com)
- Consider Office Visit, ED or Regional Testing Options
- COVID19 Testing Center

***ED Option Secondary to Other Offsite Options-Regional Specific**

Table 1 Suspected COVID19 FLU Negative

- Droplet Precautions
- ID Consult
- Respiratory Viral Panel
- COVID19 Test
- Pulse Oximetry
- CBC w/ Diff
- Consider Chest X-ray
- Follow CDC Guidelines

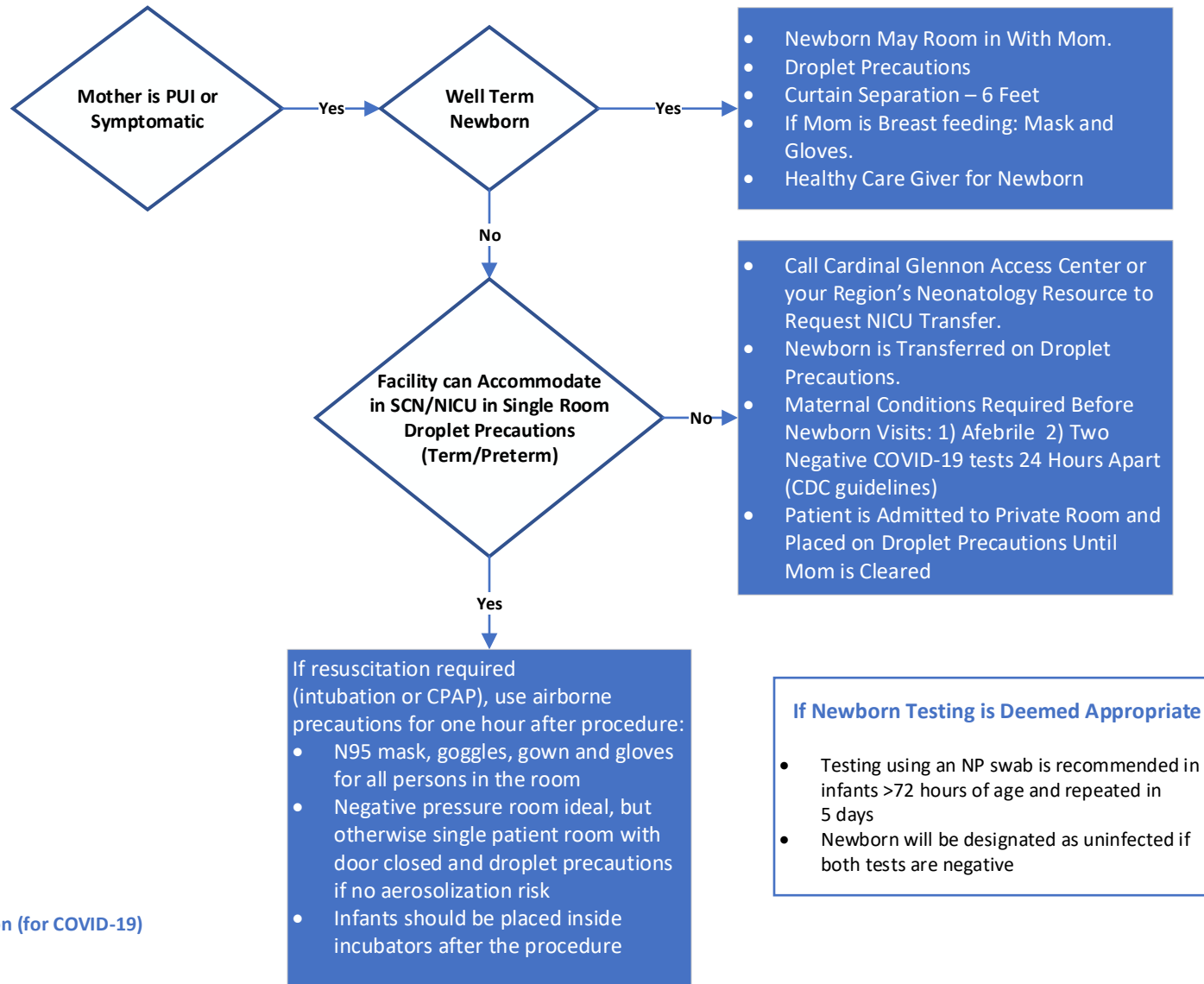
- CDC Recommendations <https://www.cdc.gov/coronavirus/2019-ncov/index.html>
- ACOG Recommendations <https://www.acog.org/Clinical-Guidance-and-Publications/Practice-Advisories/Practice-Advisory-Novel-Coronavirus2019>
- SMFM Recommendations https://s3.amazonaws.com/cdn.smfm.org/media/2262/COVID19_PDF.pdf



Abbreviations: ABG, arterial blood gases; CDC, Centers for Disease Control and Prevention; HIV, human immunodeficiency virus.
Healthcare providers should immediately notify their local or state health department in the event of a PUI for COVID-19 and should contact and consult with their local and/or state health department for recommendations on testing PUIs for COVID-19.

COVID19 Newborn Workflow

Last Update: March 24, 2020



*PUI=Person Under Investigation (for COVID-19)

- AAP Guidelines: <https://services.aap.org/en/pages/2019-novel-coronavirus-covid-19-infections/>
- CDC Guidelines: <https://www.cdc.gov/coronavirus/2019-ncov/index.html>
- British Perinatal Association Recommendations: <https://www.rcpch.ac.uk/resources/covid-19-guidance-paediatric-services>