



ILPQC Neonatal Advisory Call

October 2nd, 2017

1:00 – 2:00 pm

Overview

- Updates
- Golden Hour Updates
 - Annual Conference QI Awards
 - Sustainability
 - Survey
- Data Review
- MNO Updates
 - Workgroup
 - OB Advisory
 - State PQC Meetings
 - AIMs, Measures
- Next Steps & Questions

Introductions



- When called on, please tell us:
 - Name
 - Role
 - Institution
- Please also enter this information into the chat box!

Save the
Date!



ILPQC 5th Annual
Conference

Tuesday,
December 19

Westin Lombard

New Project Coordinator

- Welcome to **Dan Weiss**, MPH, our new ILPQC Project Coordinator
- Dan has an MPH from UIC, experience working at Lake Count Health Department, and a passion for maternal child health
- Please help us to welcome Dan to the ILPQC team! He is looking forward to working with you.

GOLDEN HOUR UPDATES

Congrats on VON Abstract Acceptance on Golden Hour



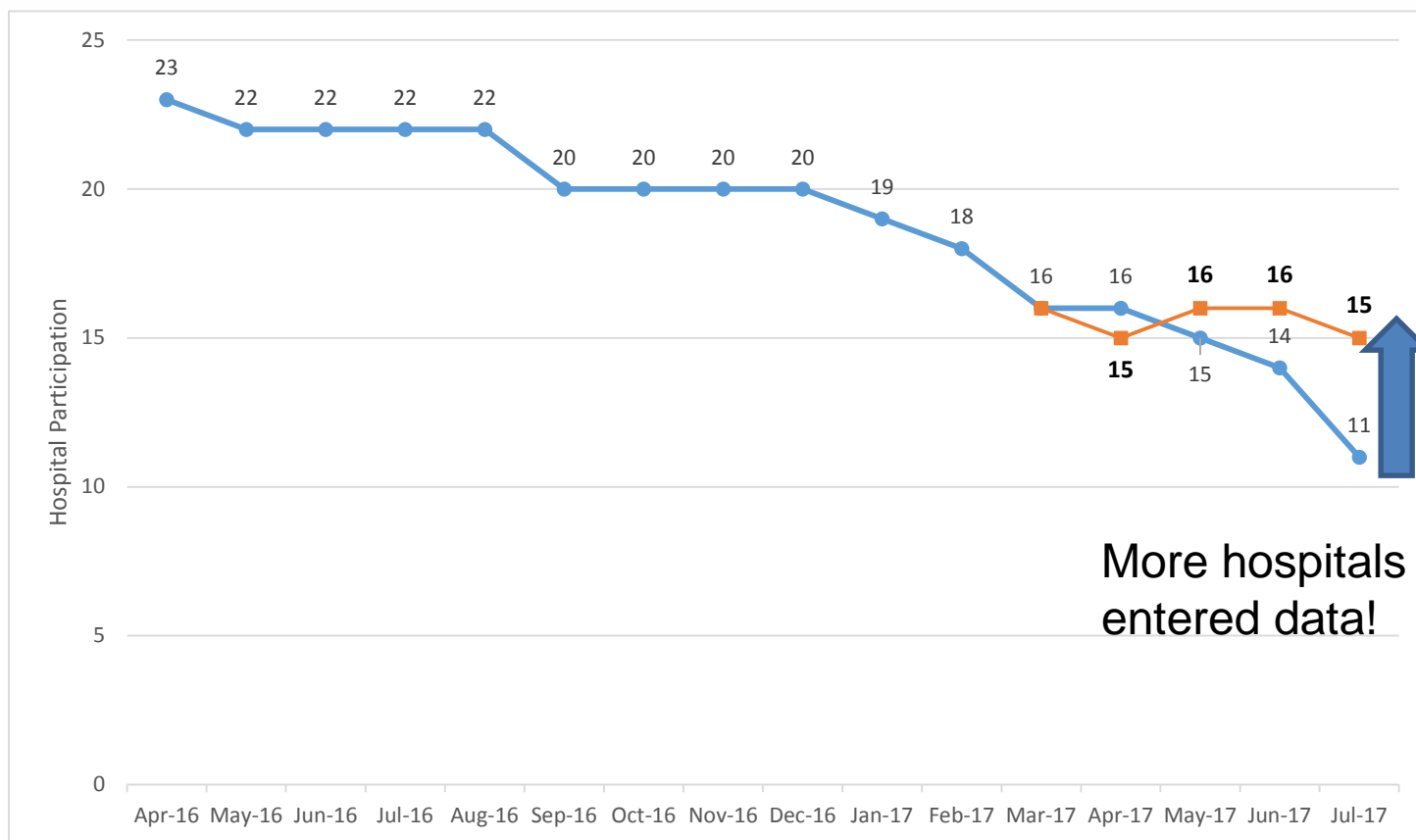
- **State Collaborative Learning Track Podium Presentation**
 - Sunday, October 29th, 1:15pm to 2:30pm at TBD
- **VON Learning Fair Poster Session**
 - Saturday, October 28th, 3:30pm to 5:00pm at the Riverwalk Exhibition Hall
- **Hall of States Poster Fair Poster**
 - Sunday, October 29th, 9:50am to 10:20am at the Ballroom Promenade

Golden Hour: 2017



- All team communications measures (80% or greater)
 - Pre-brief
 - Checklist
 - Debrief
- All family engagement measures (90% or greater)
 - Pre-resuscitation
 - During resuscitation
 - At NICU admission
- Temperature of infants upon NICU admission at 36.5-37.5°C (90% or greater)
- Delayed cord clamping (80% or greater)

GH: Number of Hospitals Entering Data by Month



We will be following up with hospitals who haven't entered data

ANNOUNCING:

QUALITY IMPROVEMENT RECOGNITION AWARDS



ILPQC GOLDEN HOUR INITIATIVE

GOLD

- ✓ Data submitted for January – October 2017
- +
- ✓ 4 target process measures at goal*

SILVER

- ✓ Data submitted for January – October 2017
- +
- ✓ 3 target process measures at goal*

BRONZE

- ✓ Data submitted for January – October 2017
- +
- ✓ 2 target process measures at goal*

*4 Target Process Measures:

- Delayed cord clamping rate at 80% or higher
- Temperature in target range at NICU admission rate at 90% or higher
- Communications measures (brief, checklist, debrief) rates at 80% or higher
- Family engagement measures (pre, during, and NICU admit) rates at 90% or higher

Sustainability

- What metrics do we want to monitor during sustainability period?
- What are our goals for monitoring?
 - 80% of deliveries will use a checklist which includes a pre-briefing with the OB and nursery team and a post-resuscitation debriefing for high-risk deliveries
 - 90% of resuscitation team leaders will have introduced themselves to the mother and/ or significant other prior to delivery
 - 80% of eligible infants will receive delayed cord clamping
 - 80% of high-risk newborns and newborns requiring resuscitation will have a pulse oximetry signal obtained by two minutes after birth

Sustainability

- 70% of eligible neonates will be initially stabilized with non--invasive respiratory support in the delivery room
- 80% of eligible neonates will receive pulmonary surfactant within 15 minutes of intubation in the delivery room
- 90% of fathers/significant others will have experienced partnership the baby's bedside in the delivery room, transport to NICU/ SCN, and during the admission process
- 90% of infants less than 32 weeks gestation or less than 1500 grams birth weight, will have a temperature between 36.5--37.5°C upon admission to the NICU
- 80% of all infants less than 32 weeks gestation or less than 1500 grams birth weight will have intravenous access, intravenous fluids, and antibiotics infusing within one hour of admission to the NICU

Sustainability Survey



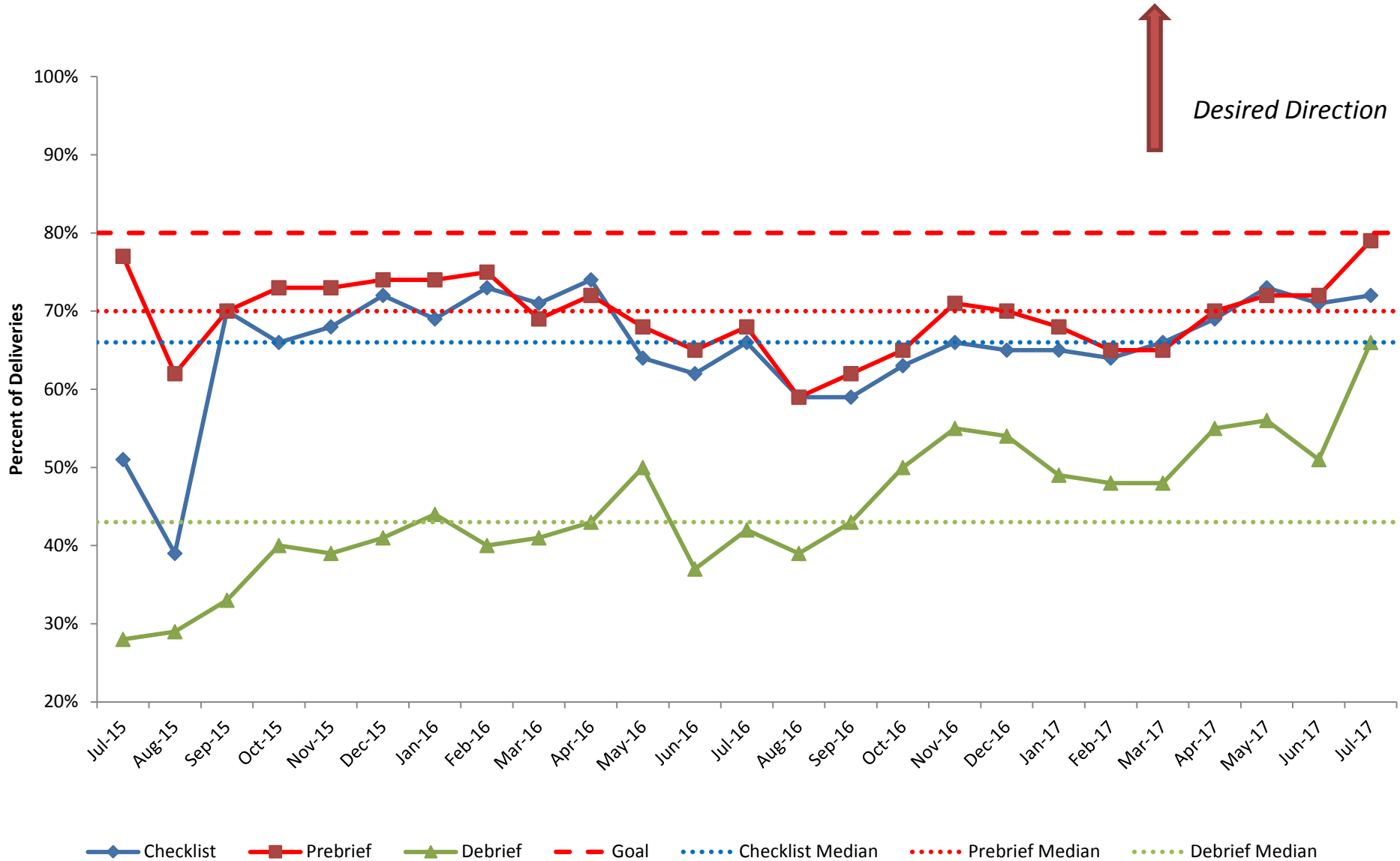
- Send out survey to Golden Hour teams before annual conference
- Possible topics for inclusion
 - Golden Hour metrics
 - Challenges and successes
 - Interest in MNO
 - Hospital administrator contact for follow up communication

GOLDEN HOUR DATA REVIEW

ILPQC: Golden Hour Initiative

Communication Practices: Percent of Deliveries Utilizing Delivery Room Checklist, Pre-brief, & Debrief

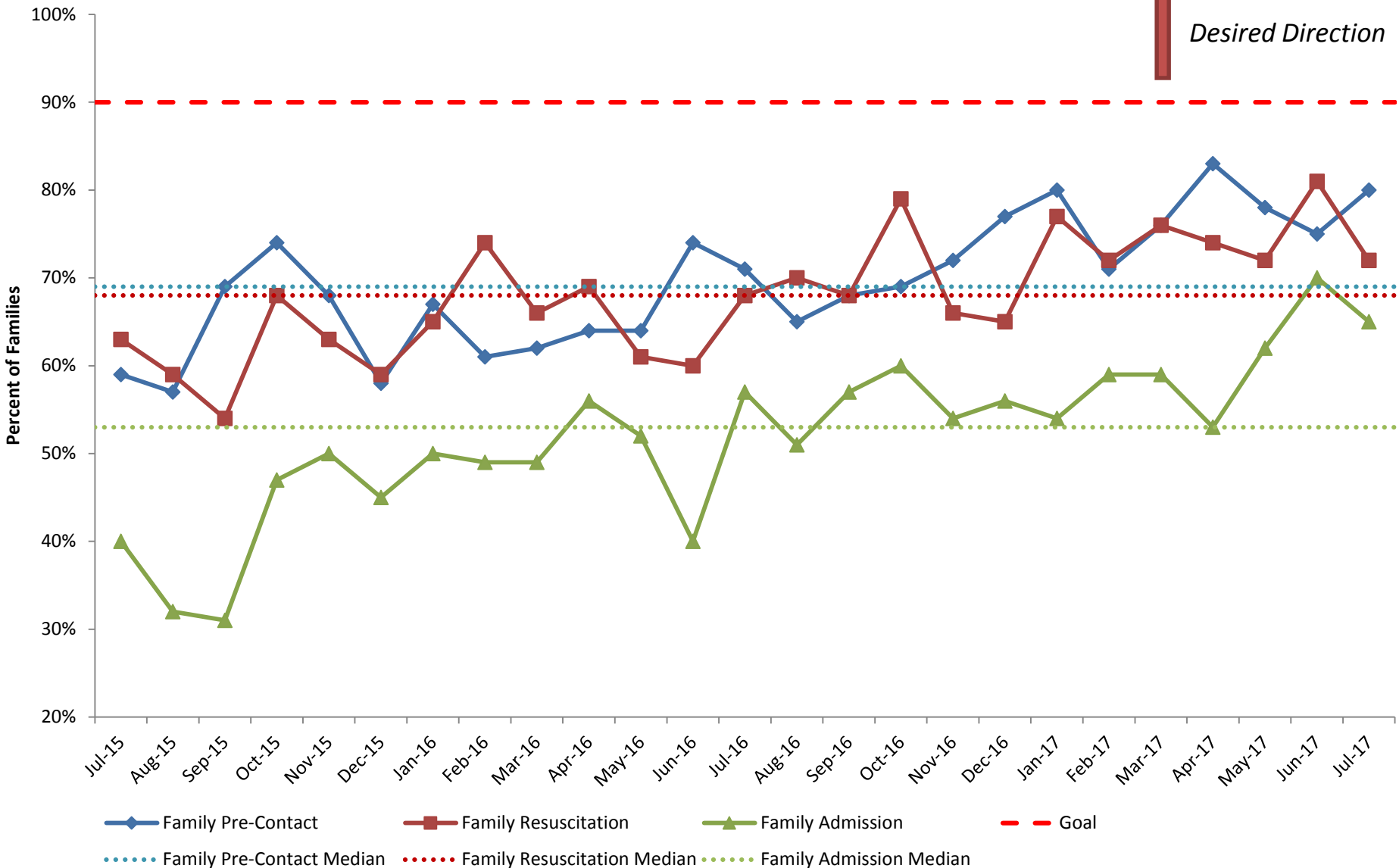
All Hospitals, 2015-2017



ILPQC: Golden Hour Initiative

Family Practices: Percent of Families Receiving Pre-Contact, Present During Admission, and Present During Resuscitation

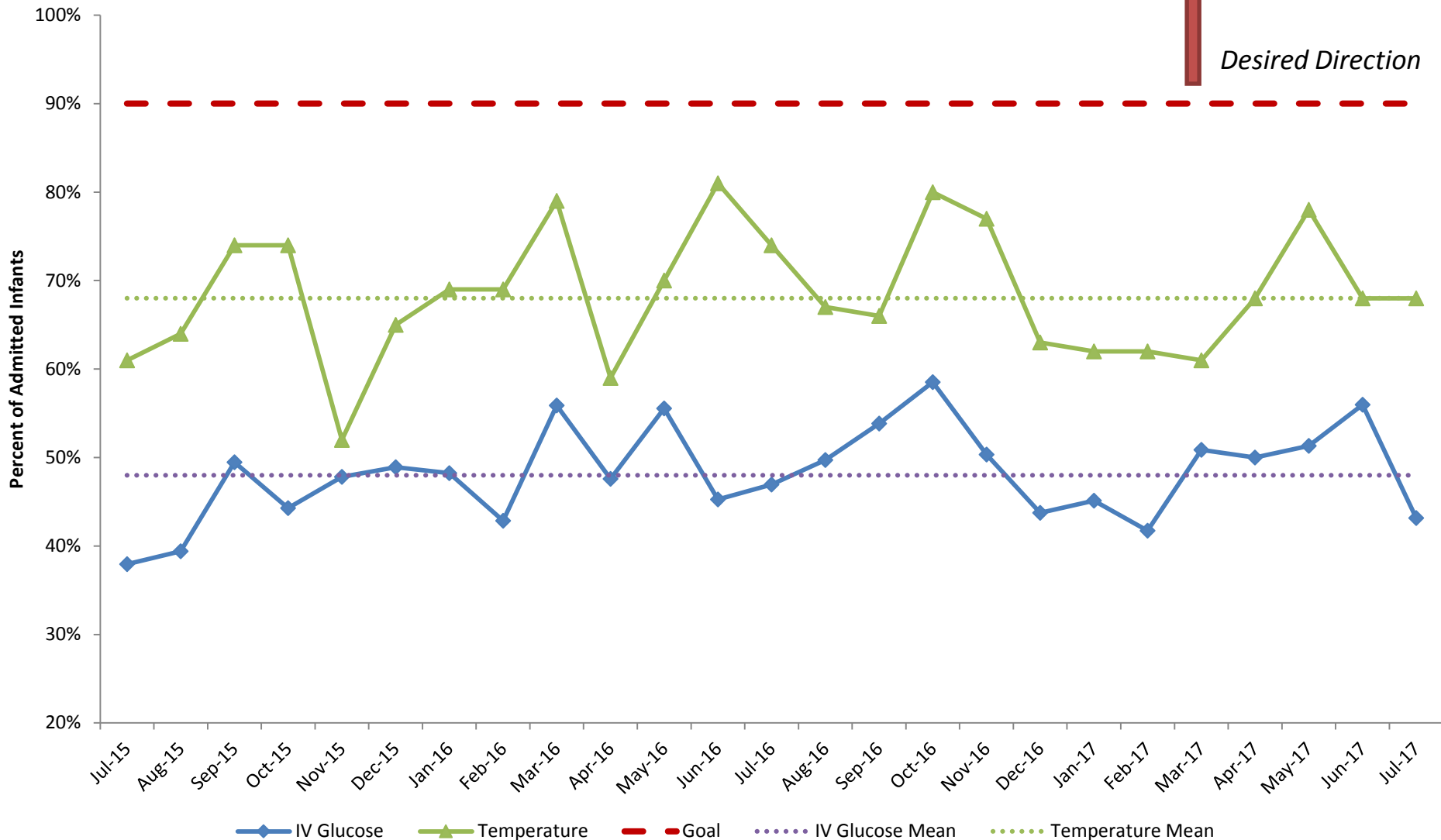
All Hospitals, 2015-2017



ILPQC: Golden Hour Initiative

Admission Practices: Percent of Admitted Infants who are Between 36.5-37.5°C on Admission (<32 weeks) & who Received IV Glucose within 1 Hour of NICU/Specialty Care Nursery Admission

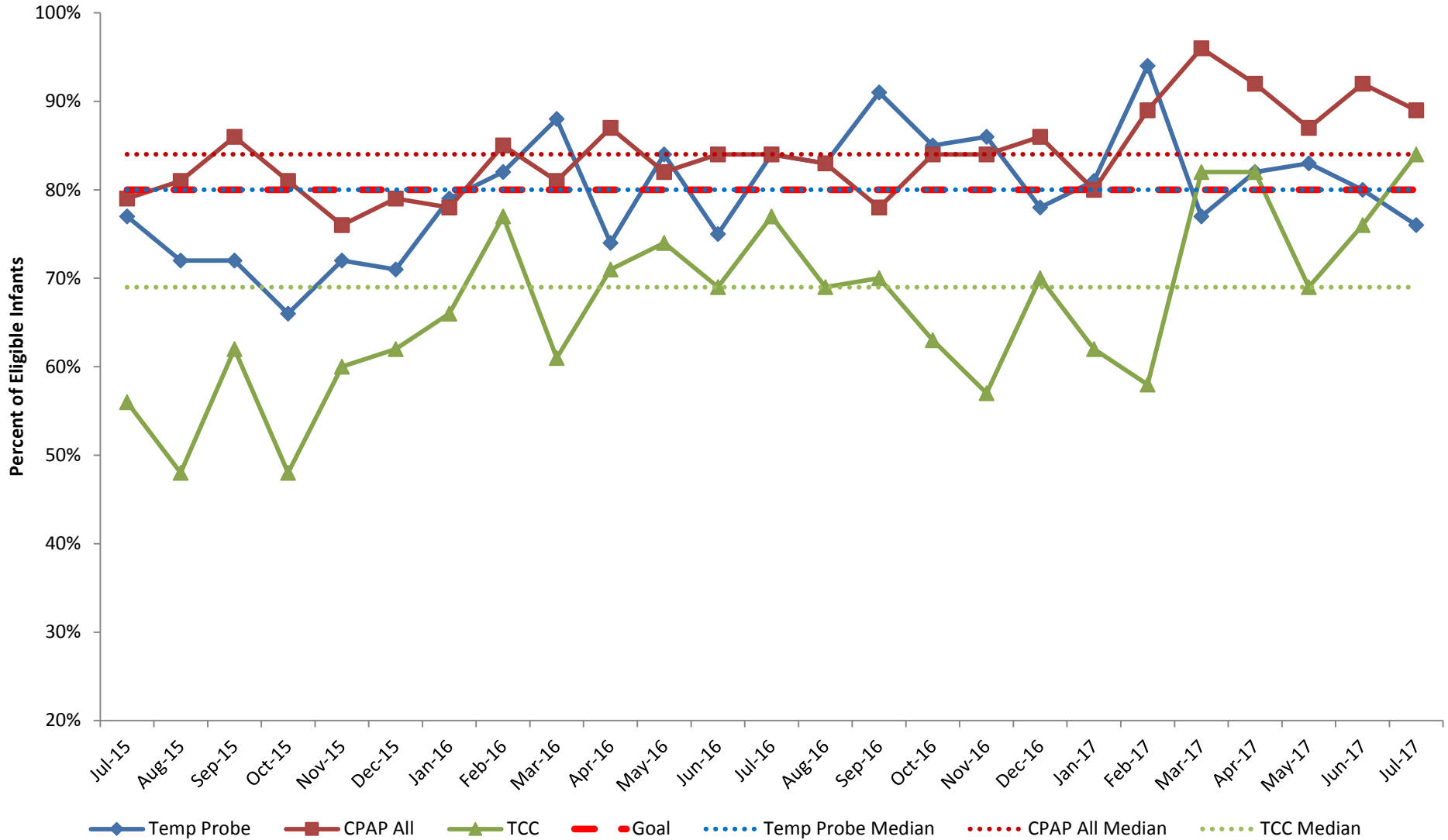
All Hospitals, 2015 - 2017



ILPQC: Golden Hour Initiative

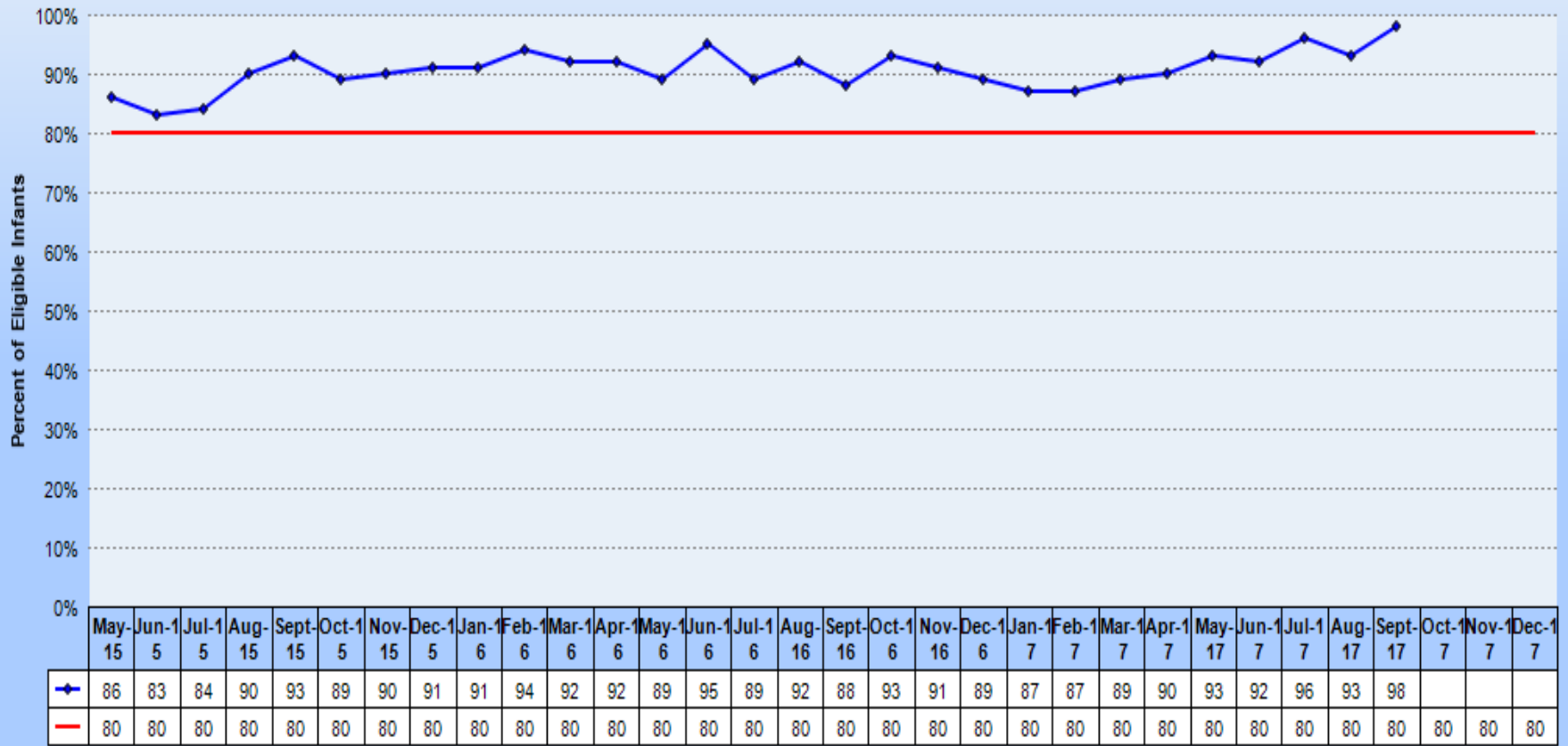
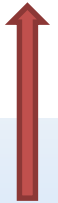
Delivery Room Practices: Percent of Eligible Infants with Temp Probe Initiated within 10 minutes, Initially Stabilized with CPAP Trial, & Delayed Cord Clamping 30-60 Seconds

All Hospitals, 2015-2017



ILPQC: Golden Hour Initiative
 Percent of Newborns Requiring Resuscitation with pulse Oximetry Initiated within Two Minutes
 Hospital 999 & Select Comparisons, 2015 - 2017

Desired Direction



◆ All Hosp Avg — Goal

Golden Hour Team Calls Schedule

- October 17:
 - Sustainability
 - Other topics
- November 21:
 - Sustainability
 - Other topics

MOTHERS AND NEWBORNS AFFECTED BY OPIOIDS (MNO) PLANNING

MNO Workgroup Updates



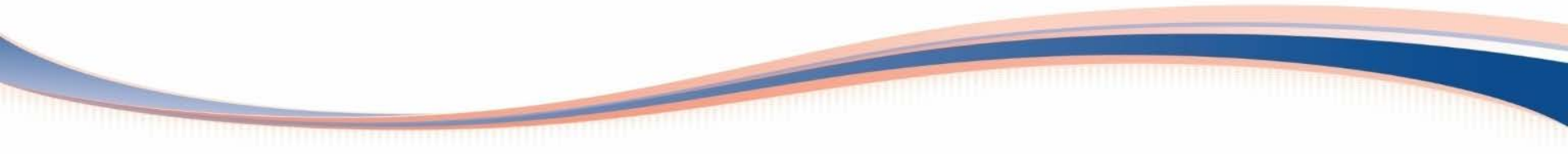
- 50 members of the ILPQC MNO Workgroup
- Two patient/family advisors Tamela Milan and Tracy Patton
- Meet 3rd Monday of month from 1-2pm
- Review of other state PQC NAS Initiatives (July)
- Review of literature by NAS topic area (Aug-Oct)
- QI methodology discussions

MNO Workgroup Updates



- ILPQC Neo and OB leadership meeting with other state PQCs to discuss possible aims and measures for OB and Neo care
- MNO Workgroup
 - OB stakeholders from the MNO Workgroup and Advisory Group will develop OB aims and measures
 - How will Neo stakeholders from the MNO Workgroup and Advisory Group work together and coordinate efforts?

Potential Advisory Group Tasks

- QI science and methodology
 - Develop AIM statements and system, process, and outcome measures
 - Develop data collection and reporting tools
 - Develop data collection with plans for sustainability measures up front
 - Avoid ambiguity in data
- 

Next Steps

- GH Team calls on October 17 and November 21 from 2-3pm
- Follow up with GH Teams about data entry
- GH survey sent out before November Neonatal Advisory Workgroup Call
- Neonatal Advisory role in MNO initiative
- Annual meeting December 19th

Upcoming Partner Opportunities

- NICU Training Institute- CNE Webinar Series
 - Experiencing Loss in the NICU: Supporting Parents & Staff through Difficult times
- October 6th , 1:00 ET
- \$199 for up to 50 Participants- 1.25 CNE and 1.5 PXE
- Register here:
<https://www.marchofdimes.org/catalog/product.aspx?productid=5456&categoryid=&productcode=D50-33-5082-17>
- Contact Laura Miller, lkmillier@marchofdimes.org for more details

THANKS TO OUR SPONSORS



IDPH