



ILPQC Golden Hour Teams Call

November 21, 2017

2:00 – 3:00 pm

Introductions



- When called on, please tell us:
 - Name
 - Role
 - Institution
- Please also enter this information into the chat box!

Overview

- General Updates
- Annual Conference
- Golden Hour Data Entry
- Golden Hour Initiative Sustainability
- Discussion
- Next Steps

Save the Date!



ILPQC 5th Annual
Conference

Tuesday,
December 19

Westin Lombard

Annual Conference Hotel Block Room Reservations

- <https://www.starwoodmeeting.com/events/start.action?id=1710035949&key=21CC118E>
- Group rate of \$139 single/double available until Nov 27, 2017



NOW ACCEPTING Poster Session Abstracts for 5th AC



- **All teams** submit an abstract sharing the great Golden Hour QI work they've done, including their **plans for sustainability / on going work in 2018**
- Welcome to submit additional abstracts regarding mothers / newborns affected by opioids, IPLARC, and patient & family engagement or other QI projects teams want to share.
- Late Breaking abstracts may be submitted through Nov 27th

Submit abstracts through link below:

https://www.surveymonkey.com/r/ILPQC_5th_ACAbstractSubmission

ANNOUNCING:

QUALITY IMPROVEMENT RECOGNITION AWARDS



ILPQC GOLDEN HOUR INITIATIVE

GOLD

- ✓ Data submitted for January – October 2017
- +
- ✓ 4 target process measures at goal*

SILVER

- ✓ Data submitted for January – October 2017
- +
- ✓ 3 target process measures at goal*

BRONZE

- ✓ Data submitted for January – October 2017
- +
- ✓ 2 target process measures at goal*

*4 Target Process Measures:

- Delayed cord clamping rate at 80% or higher
- Temperature in target range at NICU admission rate at 90% or higher
- Communications measures (brief, checklist, debrief) rates at 80% or higher
- Family engagement measures (pre, during, and NICU admit) rates at 90% or higher

2017 Annual Conference

Agenda



8:00-8:45	Welcome – TBD & Year in review – Ann, Justin Josephsen, Leslie Caldarelli
8:45-9:30	Keynote - Matthew Grossman (MNO, Neonatal/Newborn)
9:30-9:45	Break
9:45-11:15	3 leaders from State PQCs (Carole Lannon- OH, Julie DeCesear-FL, Brenda Barker - TN)
11:15-12:00	Plenary- Tamela Milan (MNO, Patient & Family)
12:00-1:30	Lunch & Poster Session
1:30-2:15	Plenary- Melinda Campopiano (MNO, OB)
2:15-3:00	Plenary - Amy Crockett (IPLARC)
3:00-3:15	Break
3:15-5:00	Breakouts: OB, Neo, Patient & Family Engagement
5:00-5:15	Wrap-Up & Evaluation

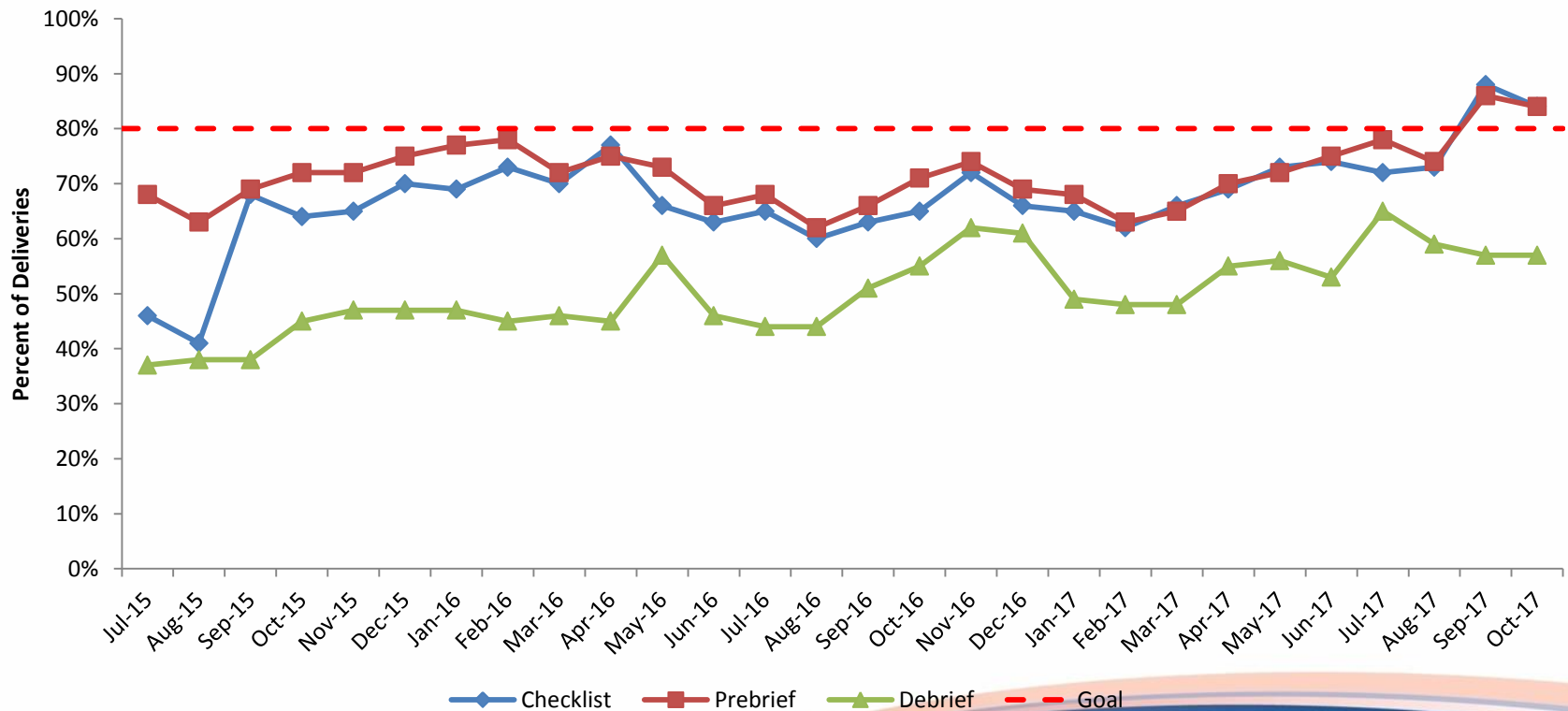
Golden Hour: Remainder of 2017



- All team communications measures (80% or greater)
 - Pre-brief
 - Checklist
 - Debrief
- All family engagement measures (90% or greater)
 - Pre-resuscitation
 - During resuscitation
 - At NICU admission
- Temperature of infants upon NICU admission at 36.5-37.5°C (90% or greater)
- Delayed cord clamping (80% or greater)

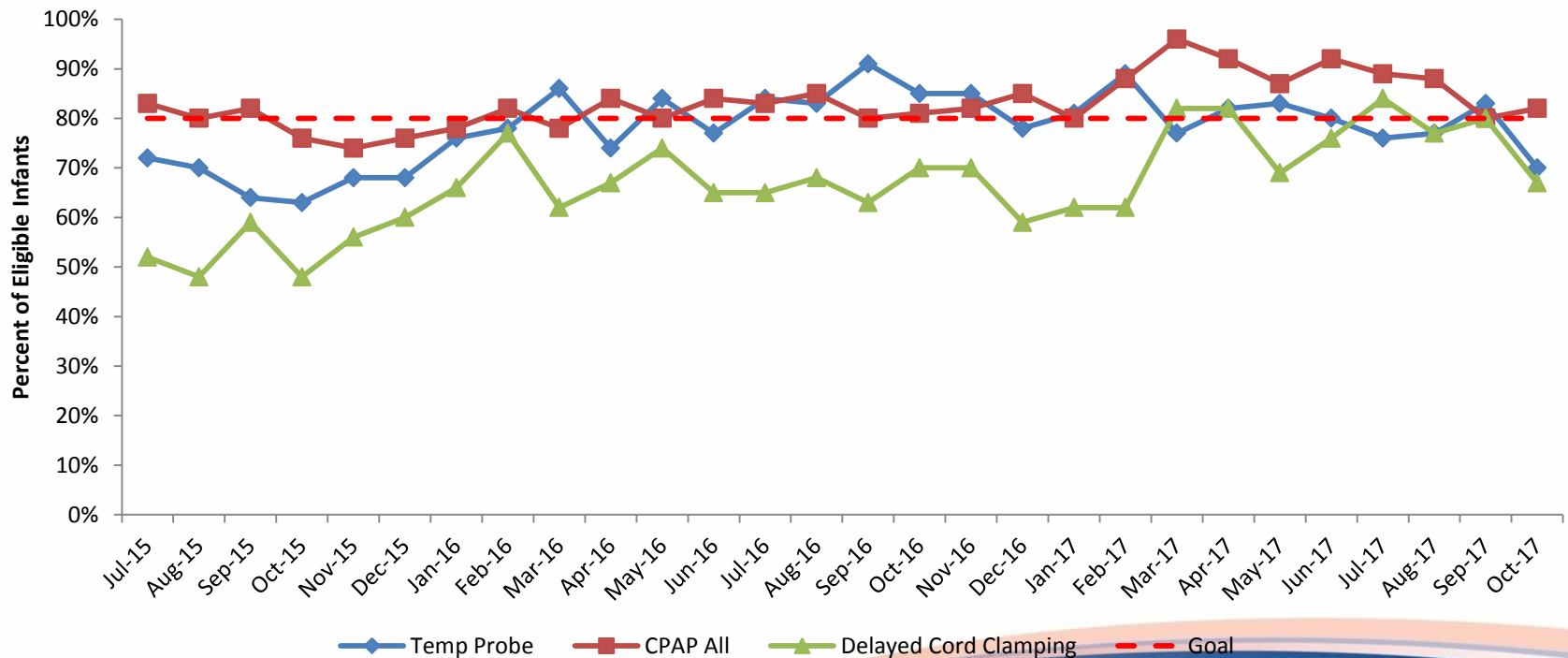
Neonatal Golden Hour: Communication Practices

ILPQC: Golden Hour Initiative Communication Practices: Percent of Deliveries Utilizing Delivery Room Checklist, Prebrief, & Debrief All Hospitals, 2015-2017



Neonatal Golden Hour: Delivery Room Practices- DCC

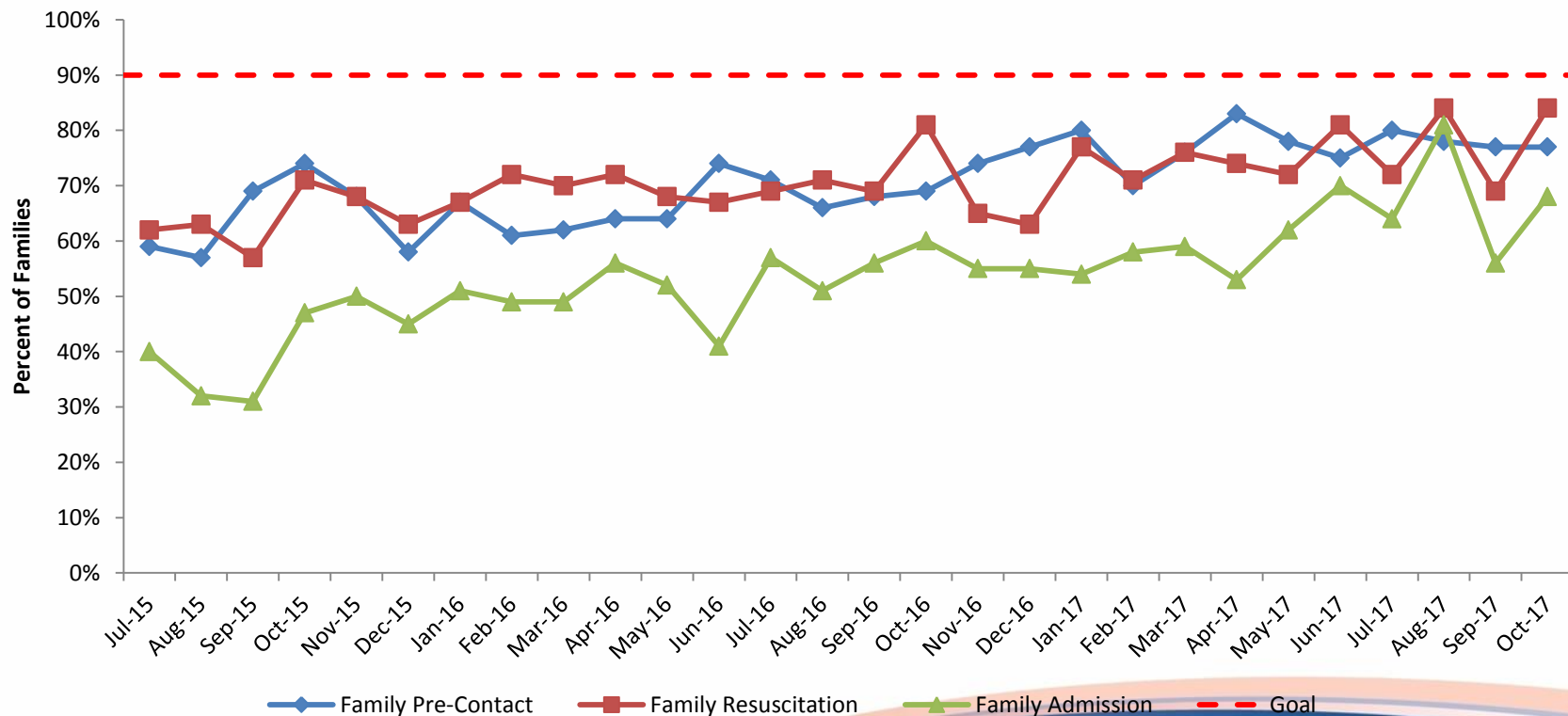
ILPQC: Golden Hour Initiative
Delivery Room Practices: Percent of Eligible Infants with Temp Probe
Initiated within 10 minutes, Initially Stabilized with CPAP Trial, &
Delayed Cord Clamping 30-60 Seconds
All Hospitals, 2015-2017



Neonatal Golden Hour: Family Engagement



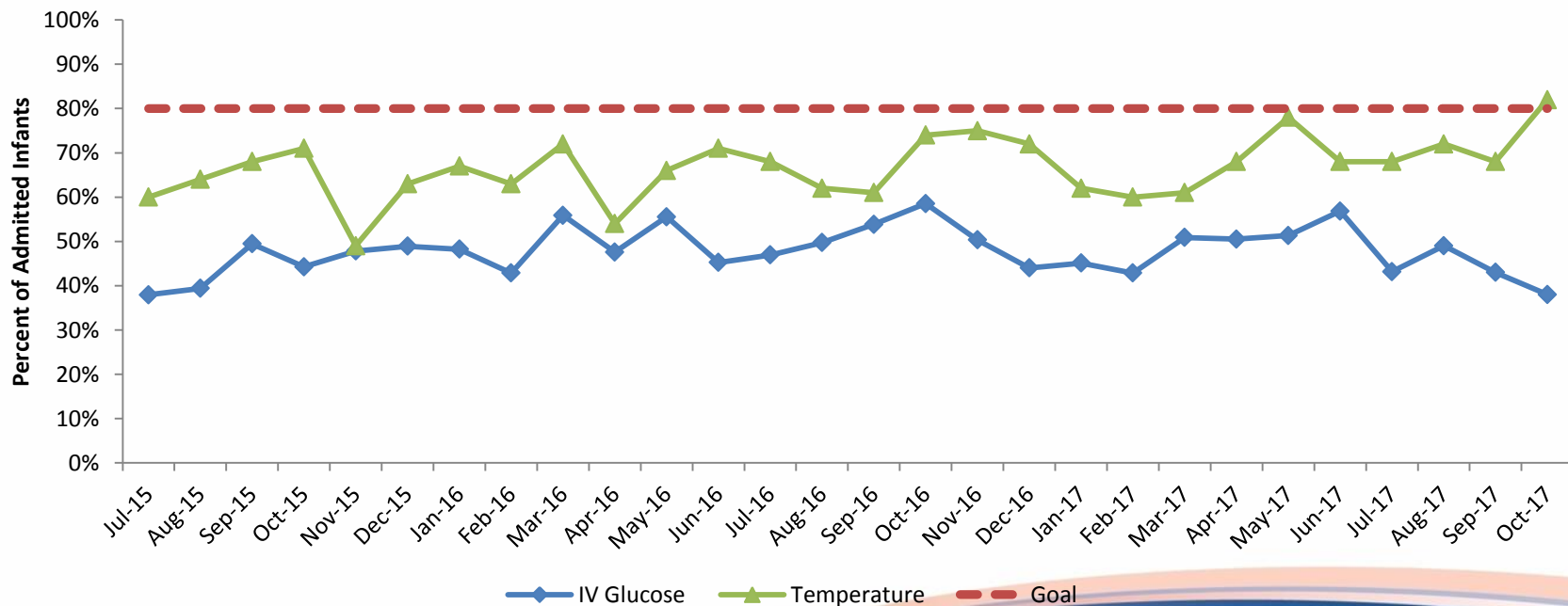
ILPQC: Golden Hour Initiative
Family Practices: Percent of Families Receiving Pre-Contact, Present During Admission, and Present During Resuscitation
All Hospitals, 2015-2017



Neonatal Golden Hour: Admission Practices – Temperature and IV Glucose



ILPQC: Golden Hour Initiative
Admission Practices: Percent of Admitted Infants who are Between 36.5-37.5°C on Admission (<32 weeks) & who Received IV Glucose within 1 Hour of NICU/Specialty Care Nursery Admission All Hospitals, 2015 - 2017



Sustainability

- What metrics do we want to monitor during sustainability period?
- What are our goals for monitoring?
- 80% of deliveries will use a checklist which includes a pre-briefing with the OB and nursery team and a post-resuscitation debriefing for high-risk deliveries
- 90% of resuscitation team leaders will have introduced themselves to the mother and/ or significant other prior to delivery
- 80% of eligible infants will receive delayed cord clamping
- 80% of high-risk newborns and newborns requiring resuscitation will have a pulse oximetry signal obtained by two minutes after birth

Sustainability

- 70% of eligible neonates will be initially stabilized with non--invasive respiratory support in the delivery room
- 80% of eligible neonates will receive pulmonary surfactant within 15 minutes of intubation in the delivery room
- 90% of fathers/significant others will have experienced partnership the baby's bedside in the delivery room, transport to NICU/ SCN, and during the admission process
- 90% of infants less than 32 weeks gestation or less than 1500 grams birth weight, will have a temperature between 36.5--37.5°C upon admission to the NICU
- 80% of all infants less than 32 weeks gestation or less than 1500 grams birth weight will have intravenous access, intravenous fluids, and antibiotics infusing within one hour of admission to the NICU

Sustainability



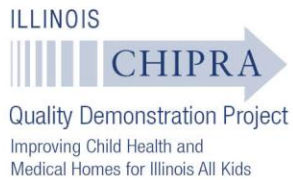
- Routine
- Measurement
- Surveillance
- Communication
- Celebration

Neonatal Teams Survey



- <https://www.surveymonkey.com/r/NeoTeamsSurvey2017>

THANKS TO OUR SPONSORS



IDPH