



ILPQC

Neonatal Breakout Session

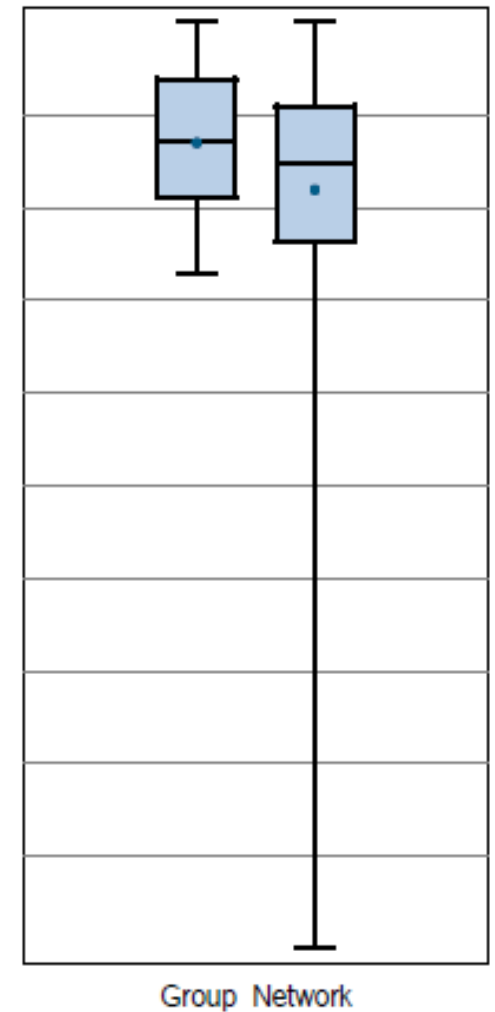
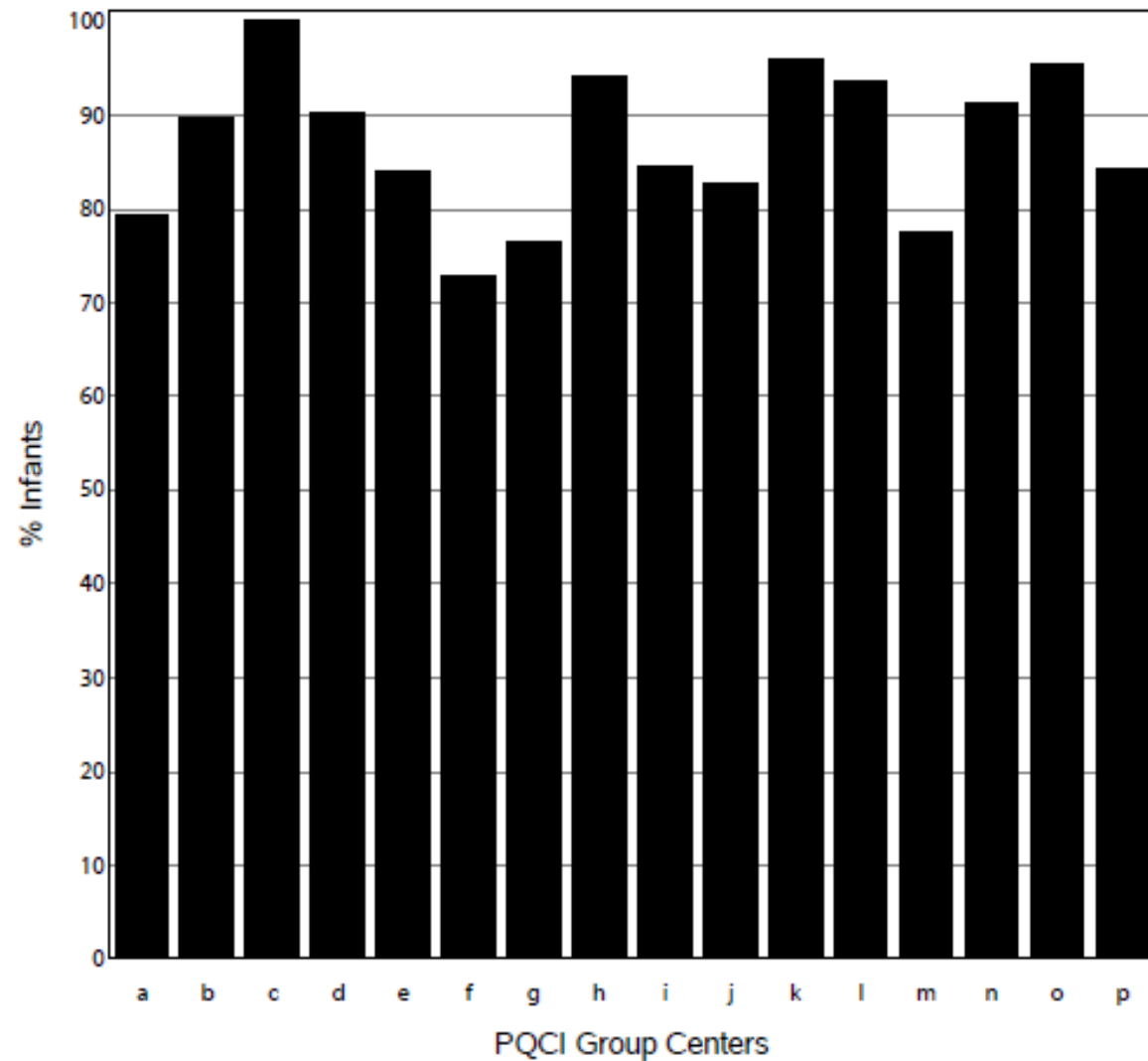
November 10th 2014



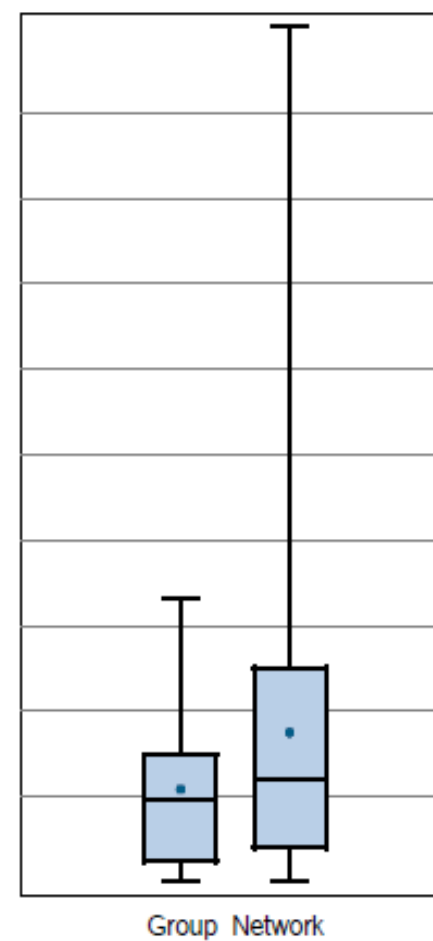
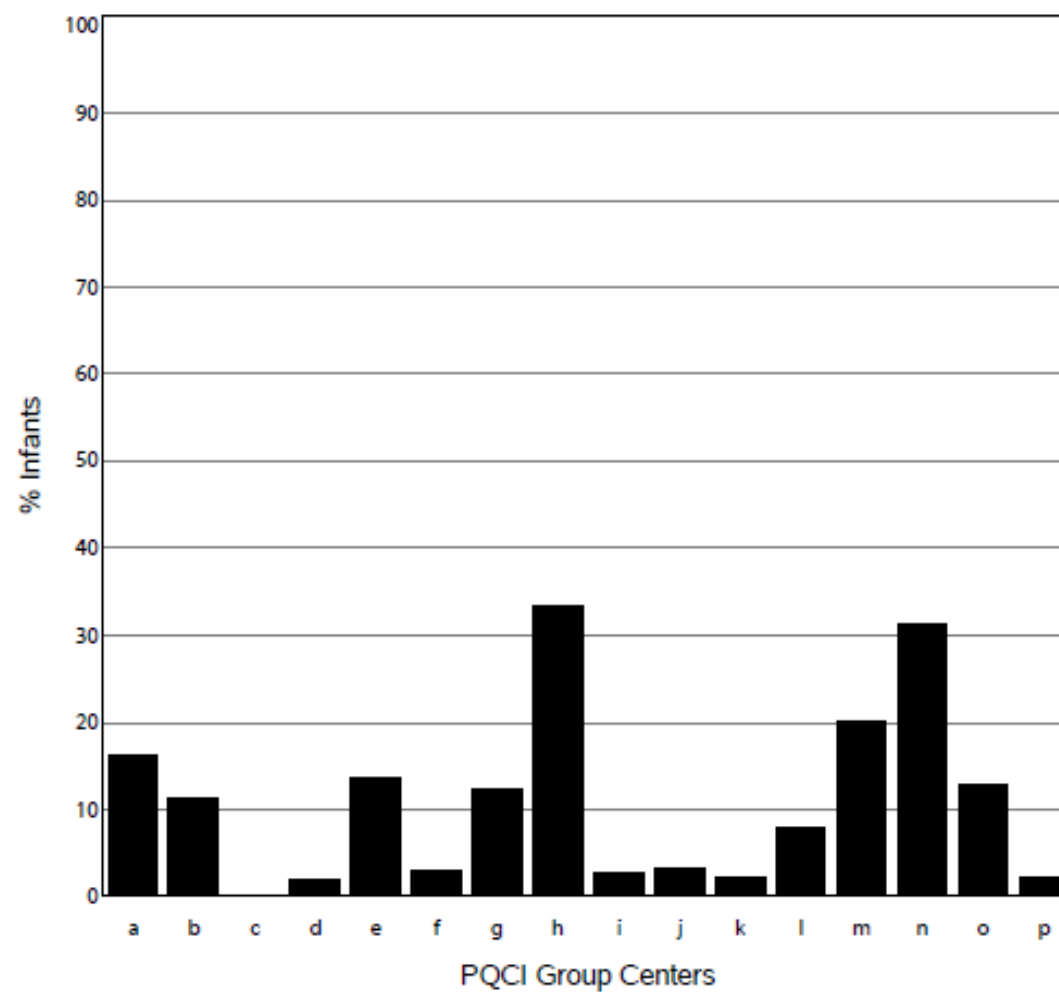
AGENDA

- ILPQC VON report
- Choice of projects
- Words of wisdom Peter and Marty

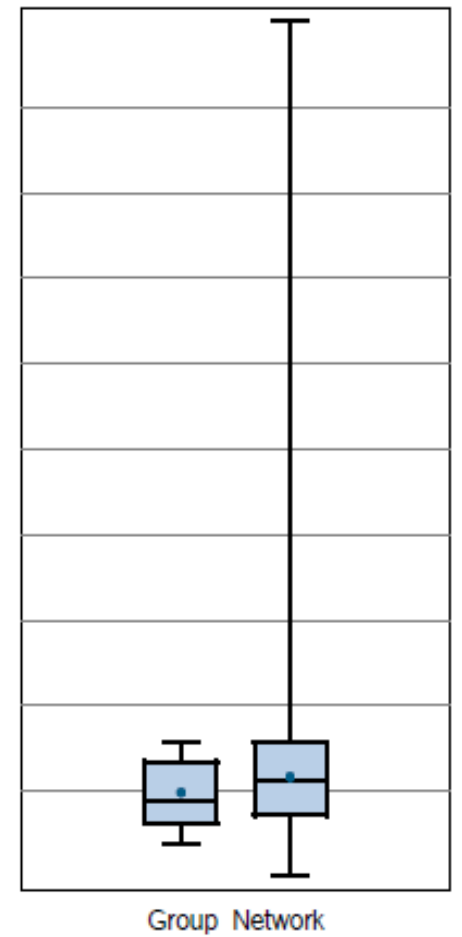
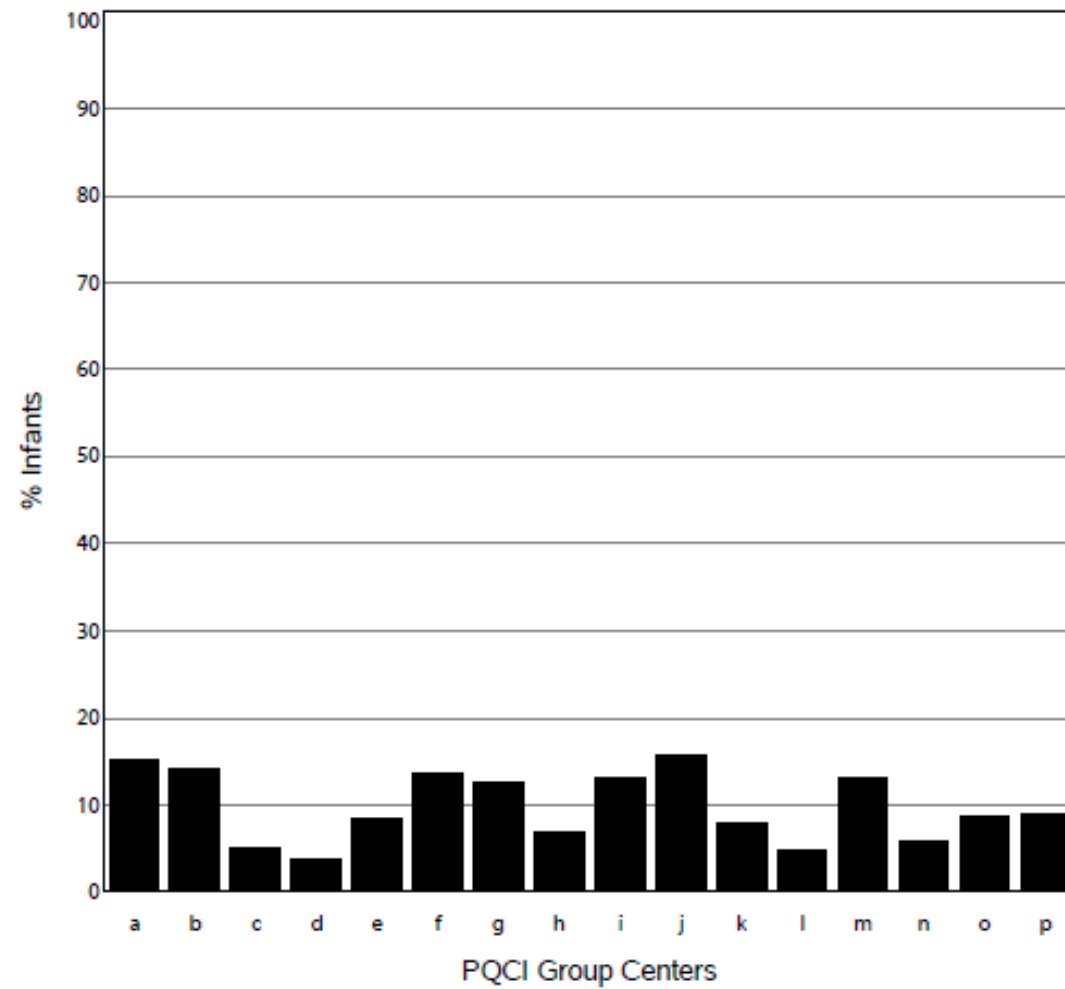
Infants 501 to 1500 Grams Born in 2013: Antenatal Steroids for Infants 24-33 Weeks GA



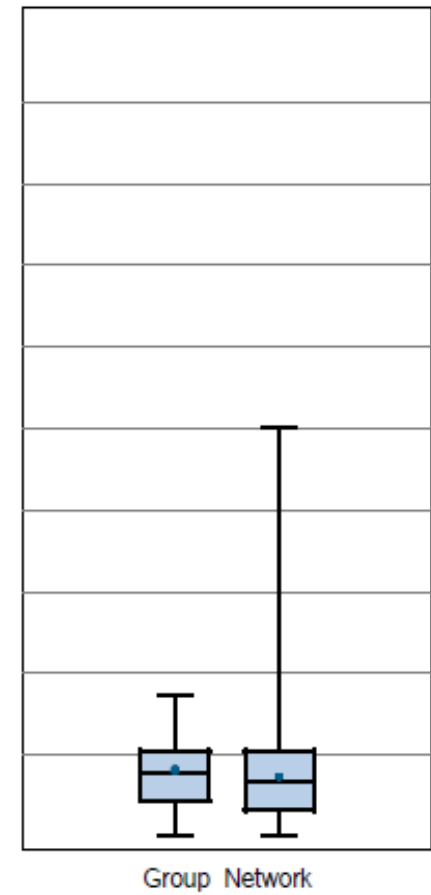
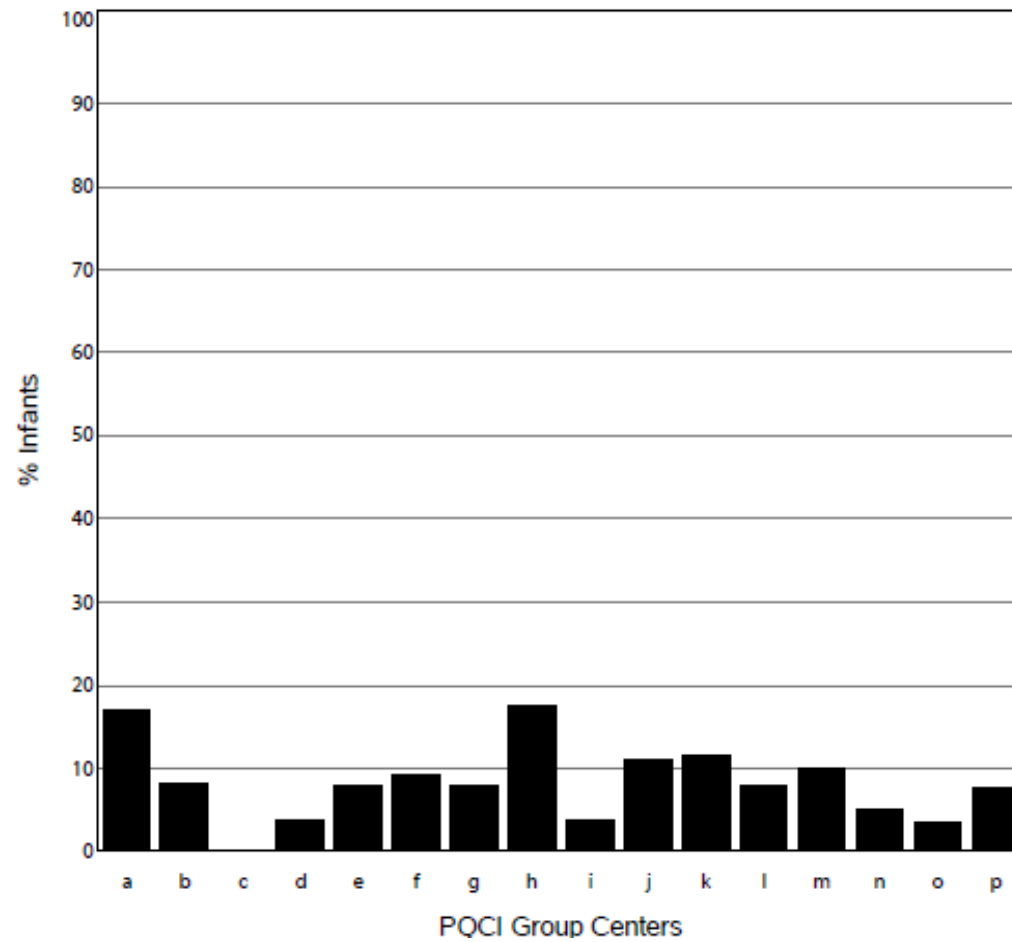
Infants 501 to 1500 Grams Born in 2013: Admission Temperature < 36°C



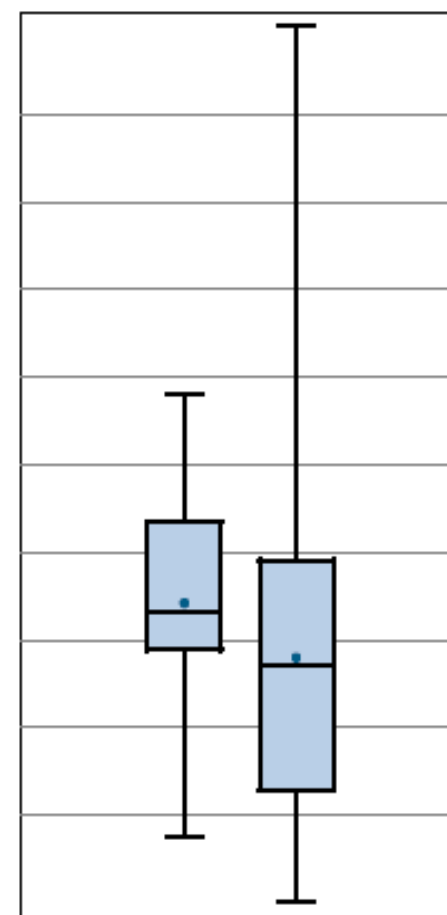
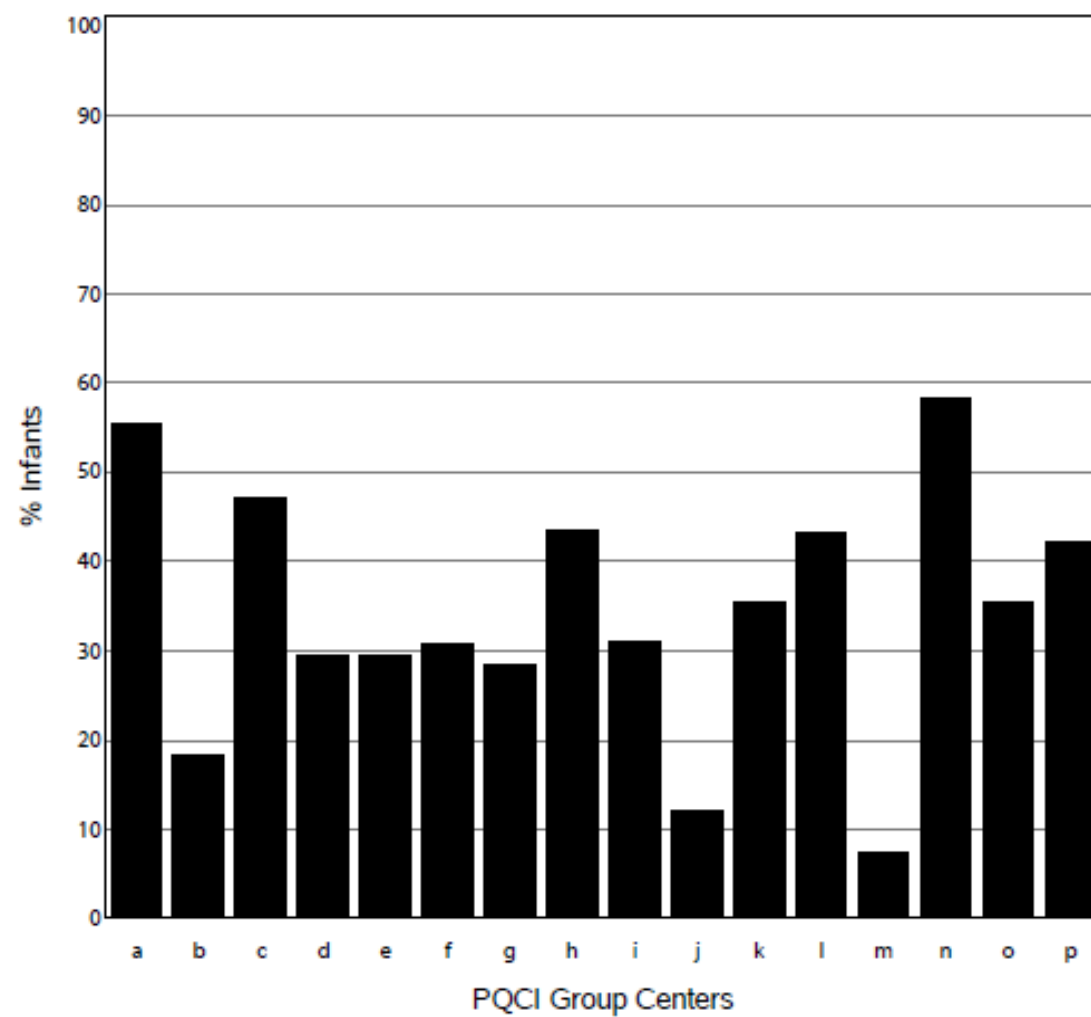
Infants 501 to 1500 Grams Born in 2013: Mortality Overall



Infants 501 to 1500 Grams Born in 2013: Severe Intraventricular Hemorrhage

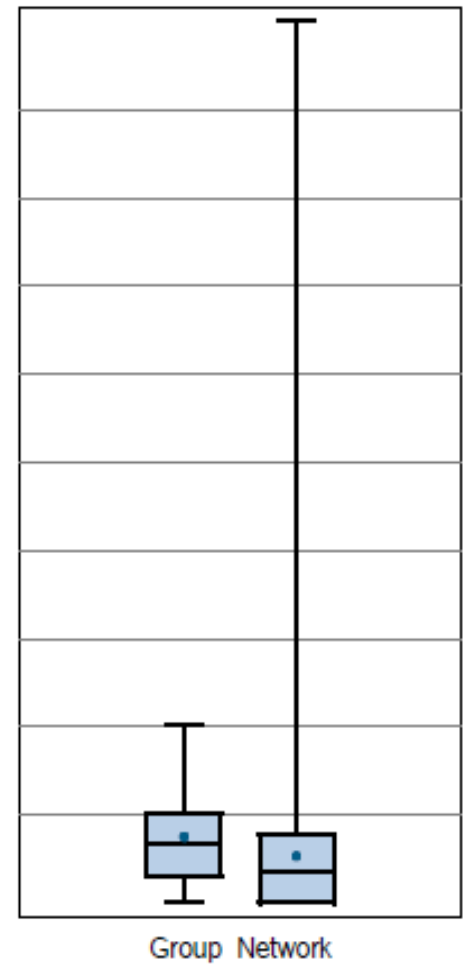
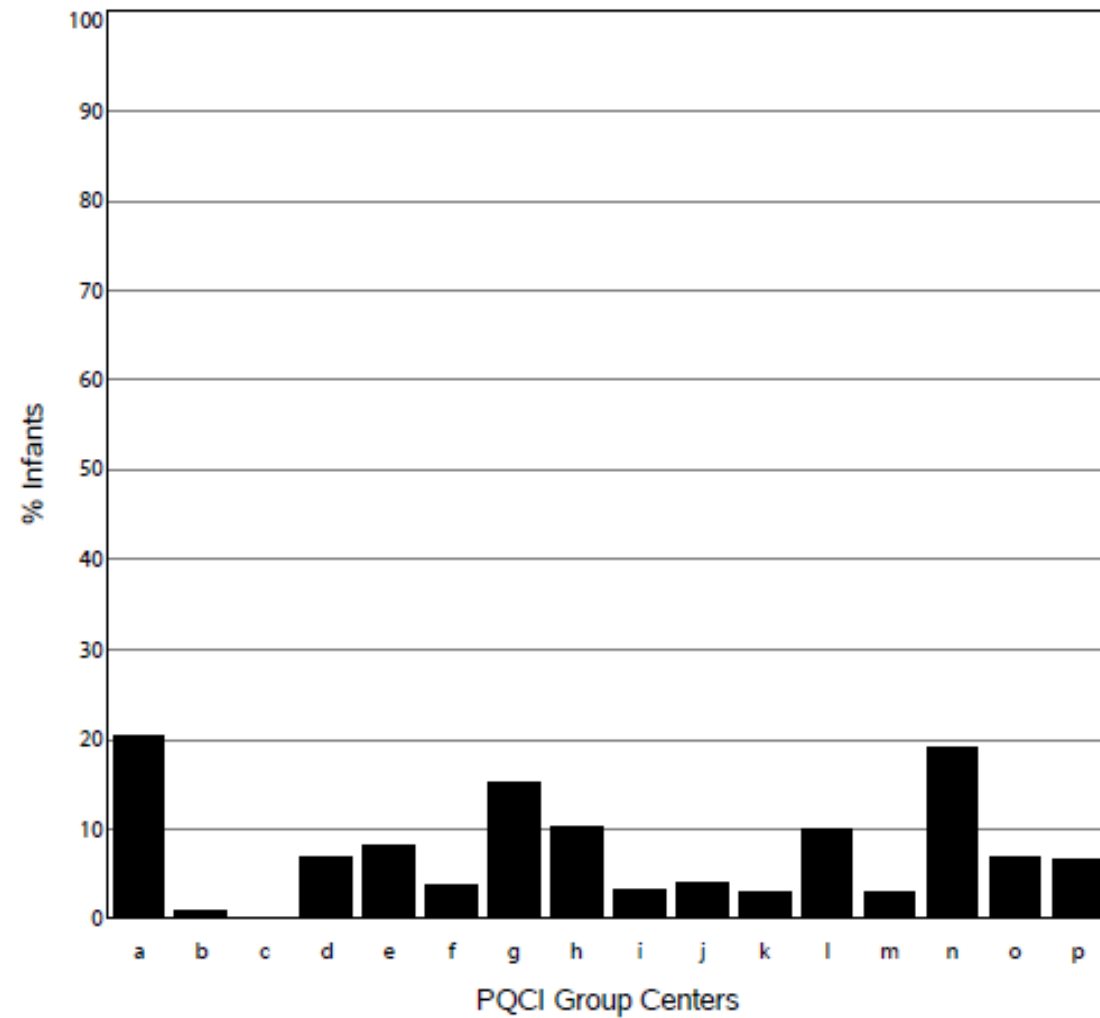


Infants 501 to 1500 Grams Born in 2013: Retinopathy of Prematurity

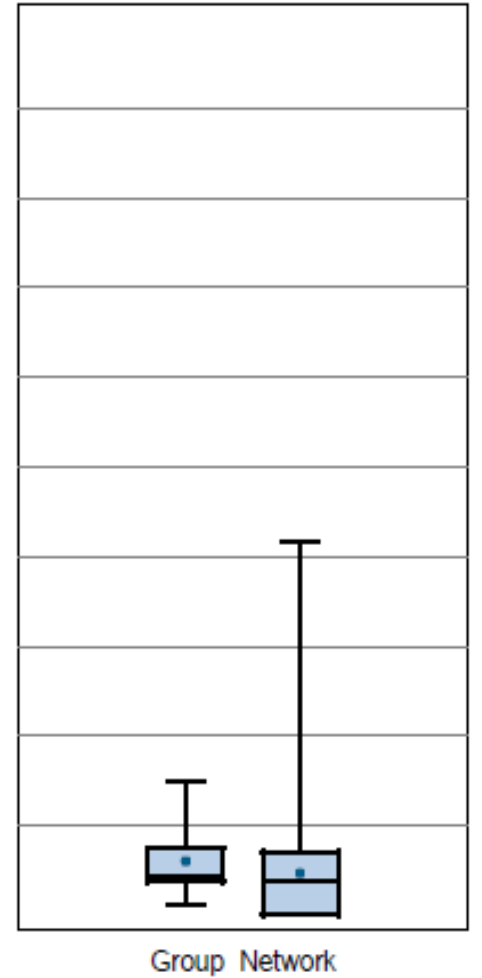
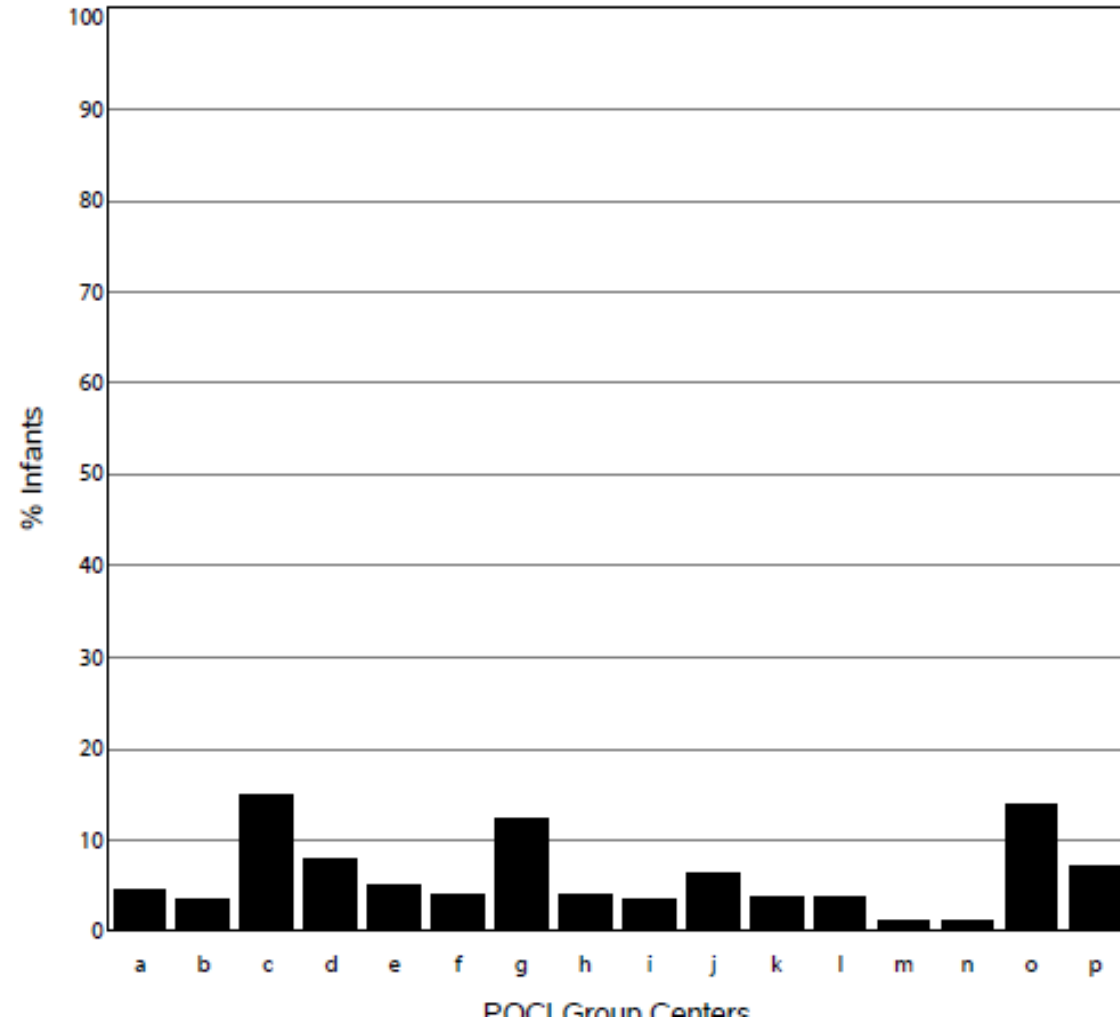


Group Network

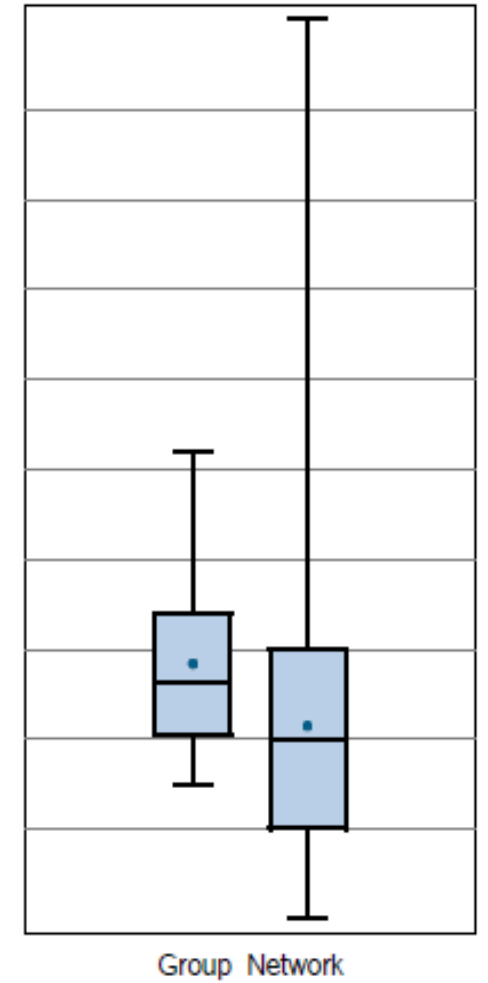
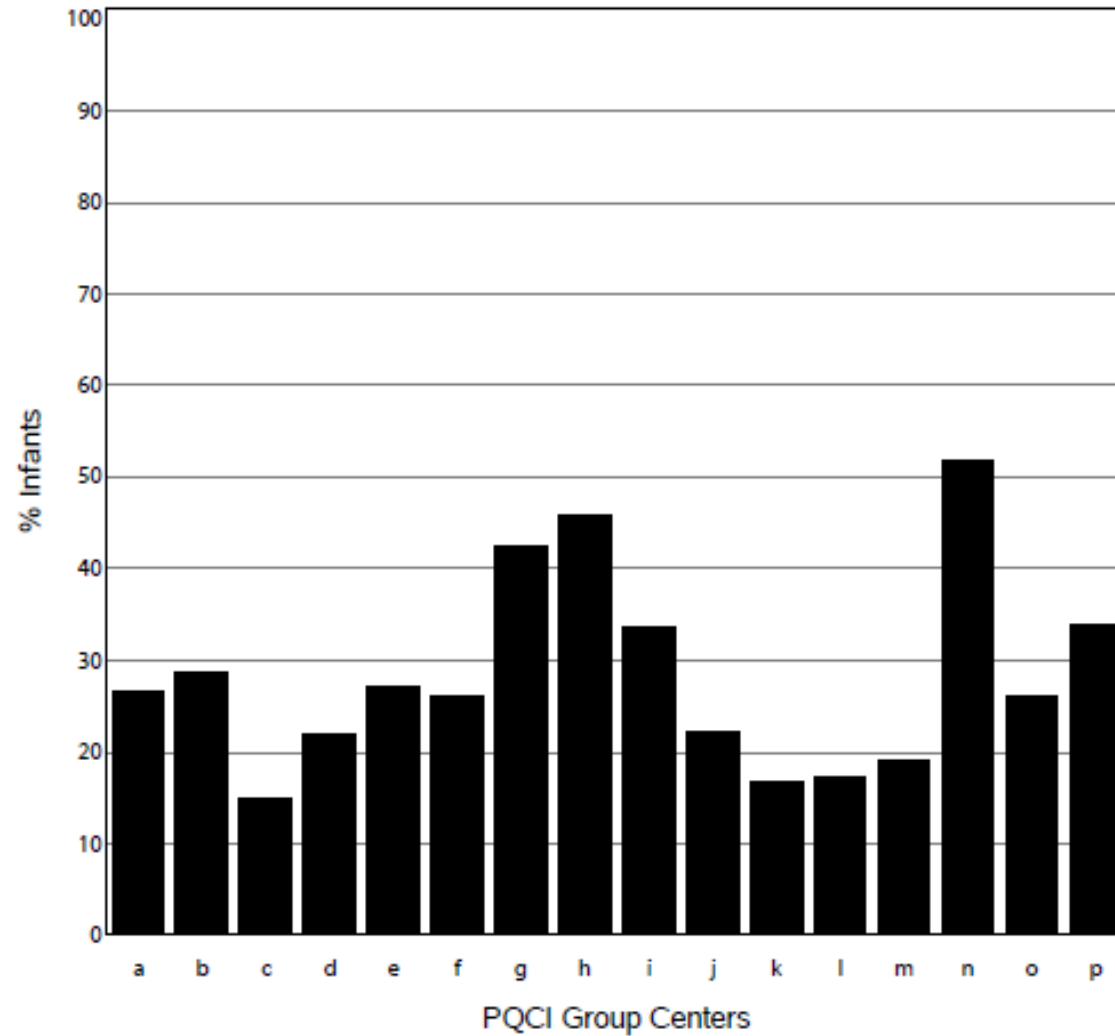
Infants 501 to 1500 Grams Born in 2013: Severe Retinopathy of Prematurity



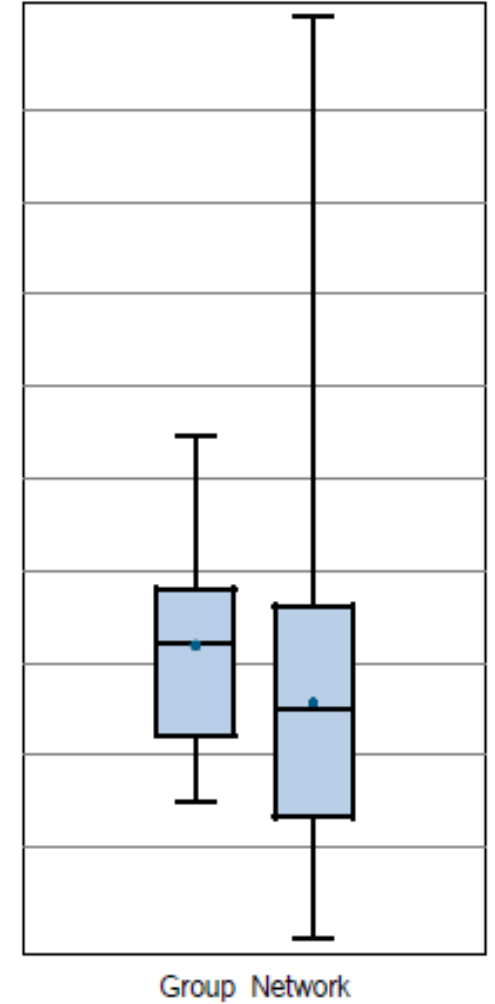
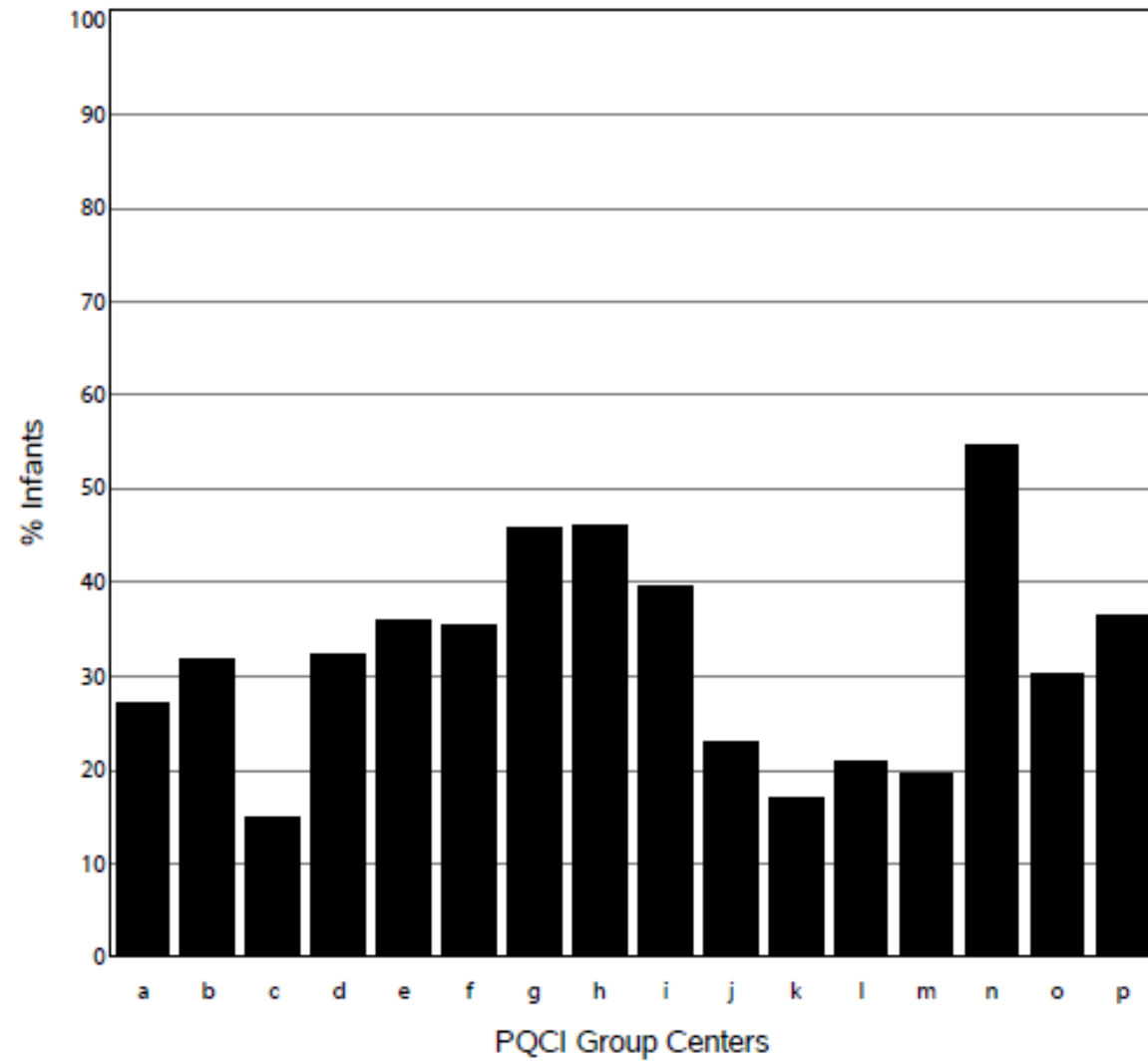
Infants 501 to 1500 Grams Born in 2013: Necrotizing Enterocolitis



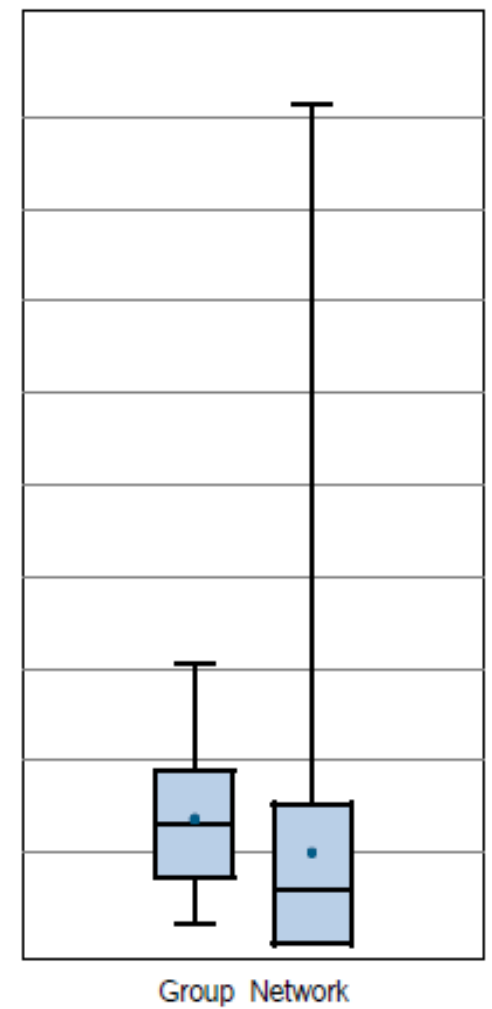
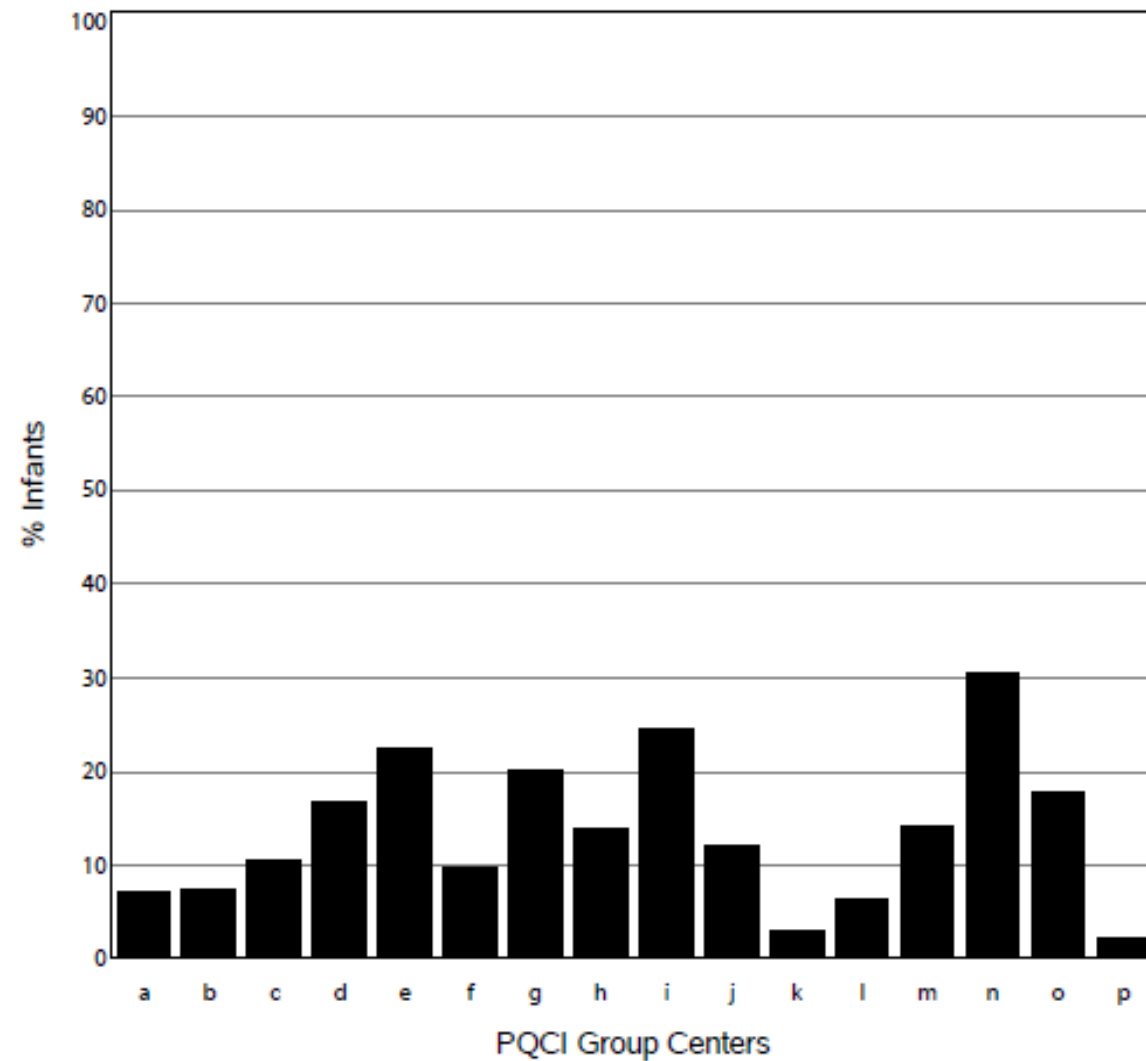
Infants 501 to 1500 Grams Born in 2013: Chronic Lung Disease at 36 Weeks



Infants 501 to 1500 Grams Born in 2013: Oxygen at 36 Weeks



Infants 501 to 1500 Grams Born in 2013: Oxygen at Discharge Home





NEXT PROJECTS

- Survey results
 - Most can do more than one project
 - Choice of project varies by level and size and location
- Possible projects
 - NAS with VON
 - Alarms with VON
 - Golden Hour/Admission process
 - CLD
 - ROP
- Vision – one or two global projects

NAS

- Pros
 - Large burden for some centers
 - VON support for practices, web ex, list serve, data, education
 - Ability to involve more staff
 - CME/CEU for staff
 - MOC credit thru VON
- Cons
 - Costs money but get lots back
 - Most centers with low NAS

ALARM SAFETY INICQ

- Pros
 - VON support as for NAS
 - Deals with O2 – relation to ROP and CLD
 - Joint Commission
- Cons
 - Same as NAS
 - Mainly level 3 project but also relevant to all



GOLDEN HOUR

- Pros
 - Good global project for all levels
 - Minimal data collection – only includes first 1-2 hours of life then done
 - Effect on CLD, ROP, IVH
 - MOC thru ILPQC
- Cons
 - May already be practice



CHRONIC LUNG DISEASE

- Pros
 - State data shows we are above VON means
 - Potential for large cost and LOS reductions
- Cons
 - Mainly Level 3 project
 - Intensive implementation
 - Intensive data collection



ROP

- Pros
 - State data above VON means
 - Potential for large cost savings
- Cons
 - Mainly Level 3 project
 - Intense implementation



NEXT PROJECT

- Choice
 - NAS iNICQ
 - Alarm Safety iNICU
 - Golden Hour/Admission
 - CLD
 - ROP
- Words of wisdom Peter and Marty
- SMS – one person per team

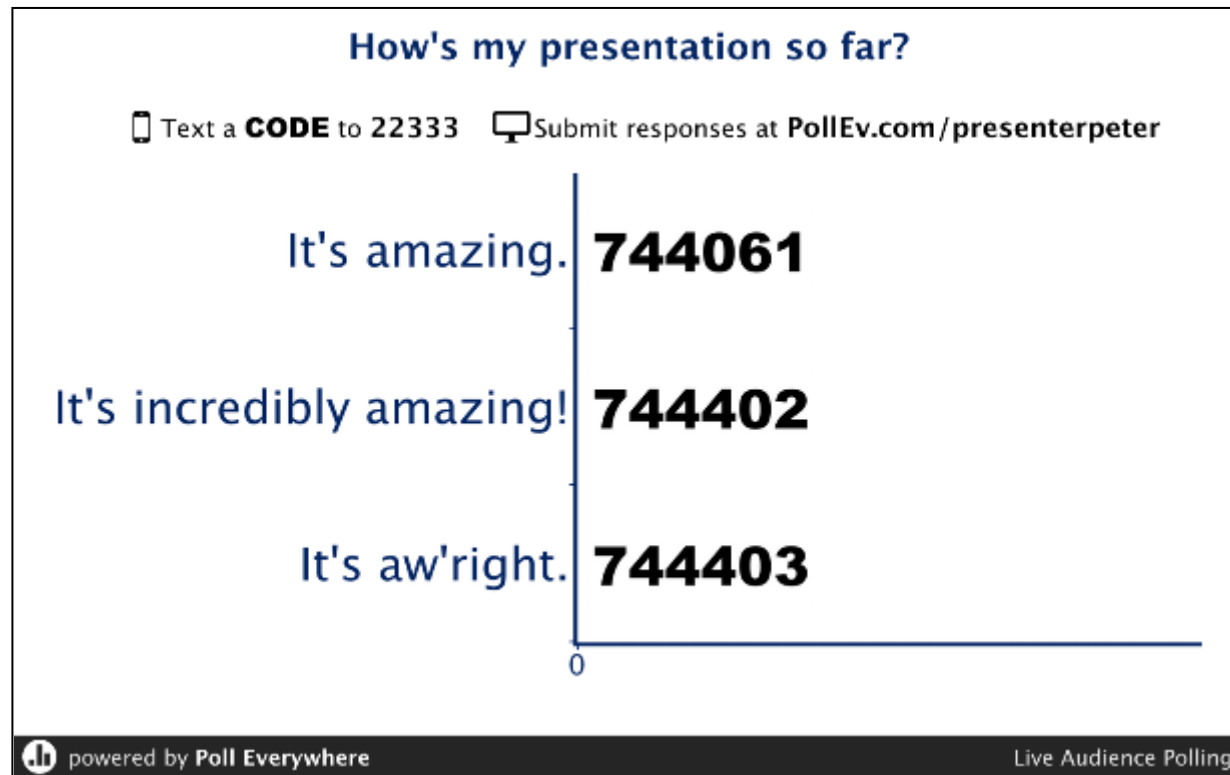


VOTING

- SMS
- One person per team

PARTICIPATING WITH POLL EVERYWHERE

HOW TO VOTE VIA TEXTING





Your poll will show here

1

Install the app from
pollev.com/app



2

Make sure you are in
Slide Show mode

Still not working? Get help at pollev.com/app/help

or

[Open poll in your web browser](#)





Your poll will show here

1

Install the app from
pollev.com/app

2

Make sure you are in
Slide Show mode

Still not working? Get help at pollev.com/app/help
or

[Open poll in your web browser](#)





Your poll will show here

1


Install the app from
pollev.com/app

2

Make sure you are in
Slide Show mode

Still not working? Get help at pollev.com/app/help
or

[Open poll in your web browser](#)





NEXT STEPS

- Vision – start of projects 1/1/2015 and go for 2 years
- Toolkits, data sheets, rosters, listserve, conf call schedule by end of year
- Parent engagement, Parents to next meeting
- ?Spring meeting