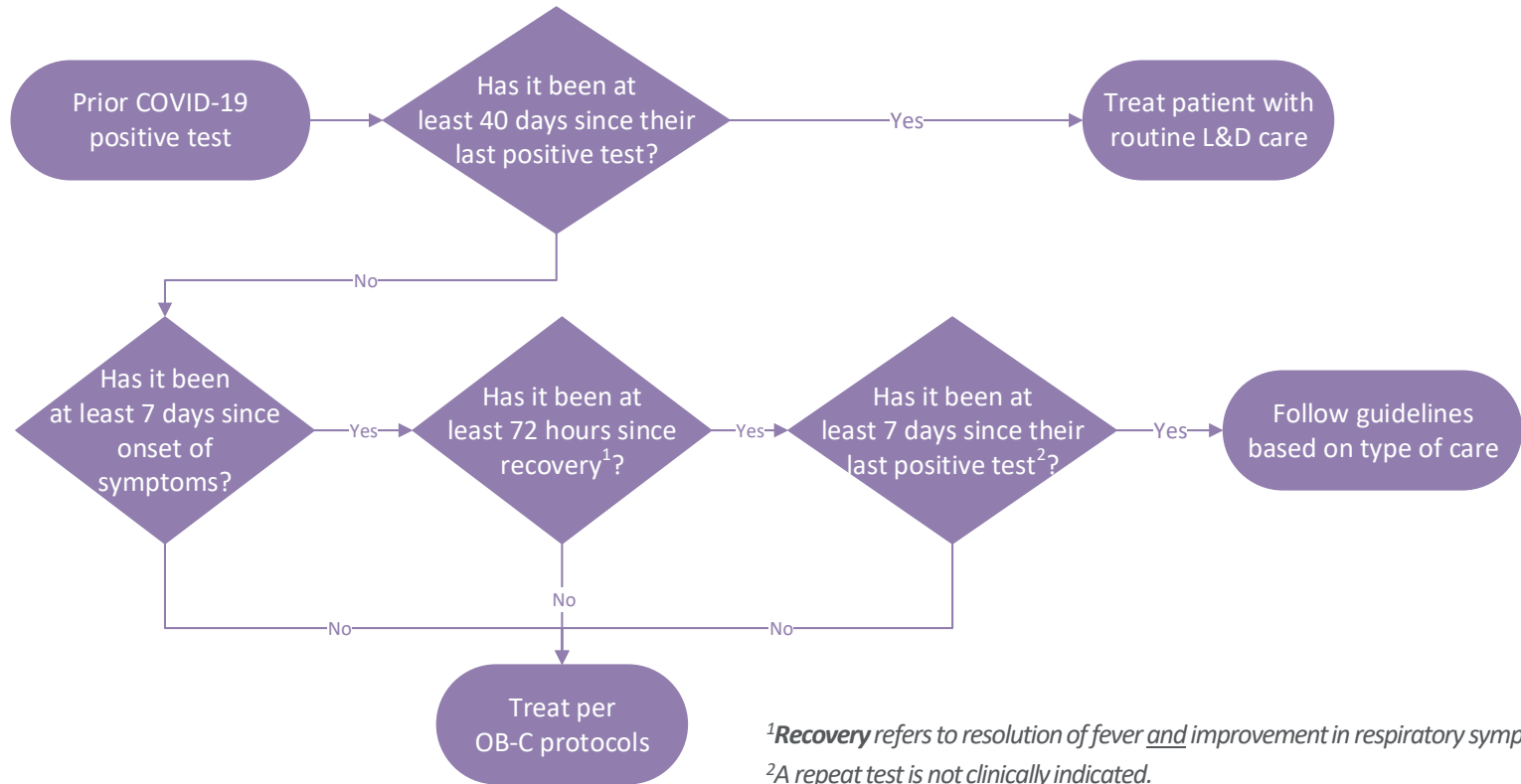


# Prior COVID+ Test Protocol



## Guidelines

Outpatient Care	L&D	Postpartum (7-14 days since symptom onset/positive test)	Postpartum (>14 days since symptom onset/positive test)
<ul style="list-style-type: none"> <li>• Patient masked on entry</li> <li>• Droplet &amp; contact precautions</li> </ul>	<ul style="list-style-type: none"> <li>• Patient wears mask (as tolerated)</li> <li>• Droplet &amp; contact precautions for labor</li> <li>• Droplet &amp; contact precautions + N95 for 2<sup>nd</sup> stage/delivery</li> <li>• Cesarean in regular OR</li> <li>• Healthy visitor permitted (with mask)</li> </ul>	<ul style="list-style-type: none"> <li>• Infant admitted to NICU TEAM 3</li> <li>• Baby rooms in but efforts made to minimize direct maternal/infant contact</li> <li>• Patient wears mask</li> <li>• Strict hand hygiene w/newborn care</li> <li>• Newborn screening occurs in the room</li> <li>• Droplet &amp; contact precautions</li> <li>• Healthy visitor permitted (with mask)</li> </ul>	<ul style="list-style-type: none"> <li>• Infant admitted to PCP</li> <li>• Baby rooms in</li> <li>• Patient wears mask</li> <li>• Droplet &amp; contact precautions</li> <li>• Healthy visitor permitted (with mask)</li> </ul>