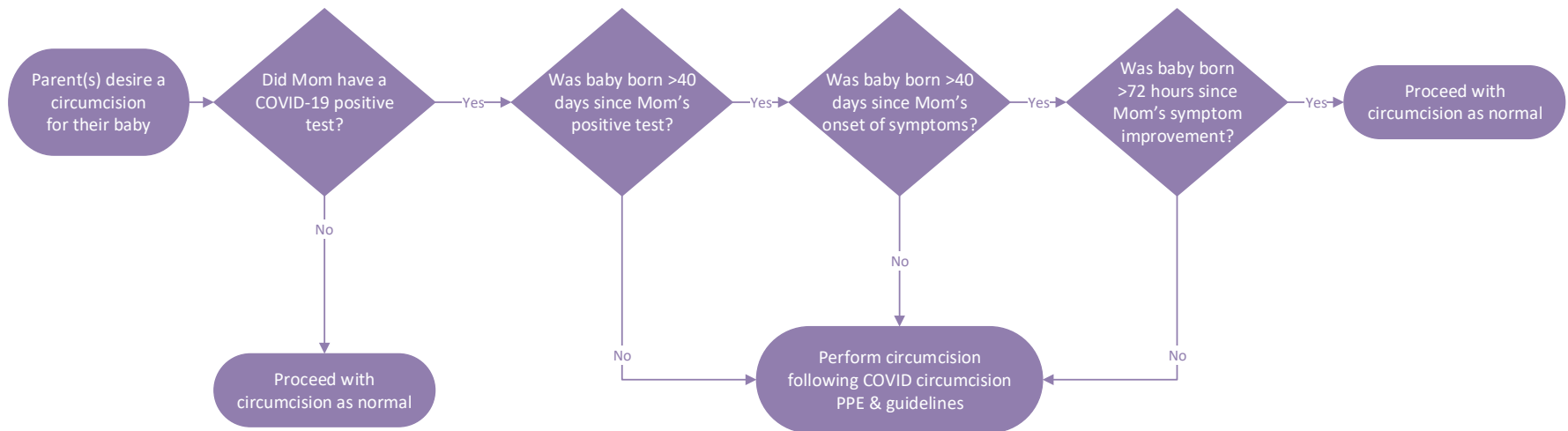


Baby Circumcision COVID Protocol



COVID Circumcision PPE	COVID Circumcision Guidelines
<p><i>OB clinician and PCT/nurse should use:</i></p> <ul style="list-style-type: none"> • Surgical Mask • Gown • Gloves • Face Shield/Goggles 	<ul style="list-style-type: none"> • Contact/droplet with eye protection sign on door • Minimize people coming in and out during the procedure • Wipe down bassinet with purple top PDI wipes prior to transferring baby from patient room (if applicable) to procedure room • Wipe down all surfaces after procedure with purple top PDI wipes and leave to dry for 2 minutes <ul style="list-style-type: none"> ▪ There is no additional turn around time needed to re-use that procedure room