

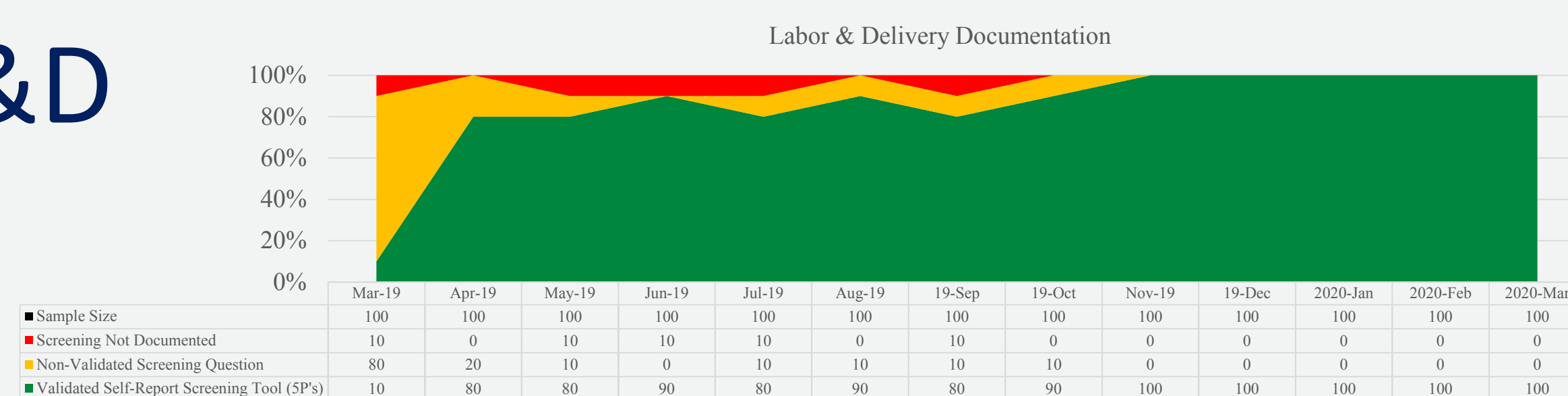
## 2. Hospital & QI Team Overview

- Melissa Kelley: OB Director
- Michael Hubbell: OB Physician
- Tanner Colegrove: OB Hospitalist
- Jacqueline Lowry: OB Educator
- Judy Paywal: OB RN
- Jen Altounian OB RN
- Heather Brown: Quality Leader
- Mary Scopelliti: Quality Leader

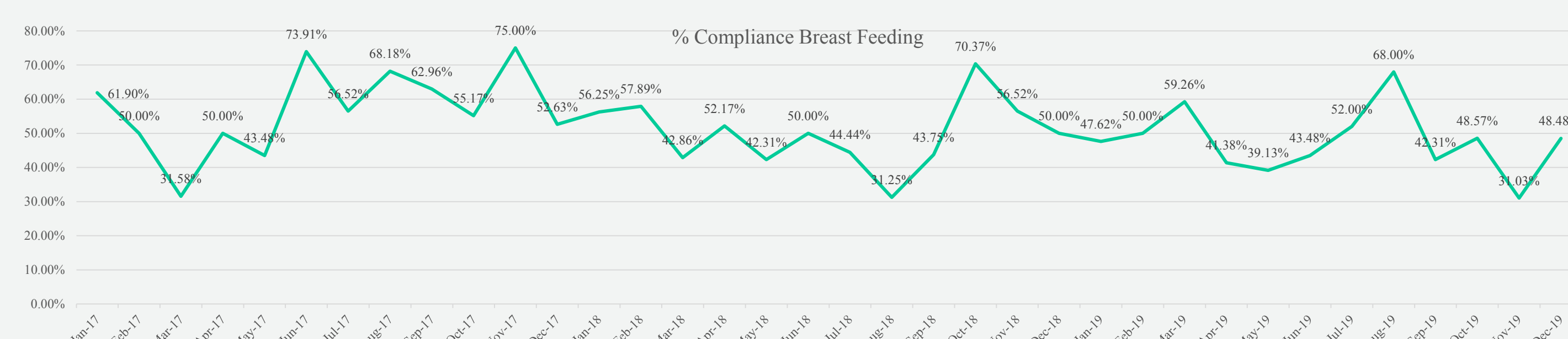


## 3. MNO-OB Data

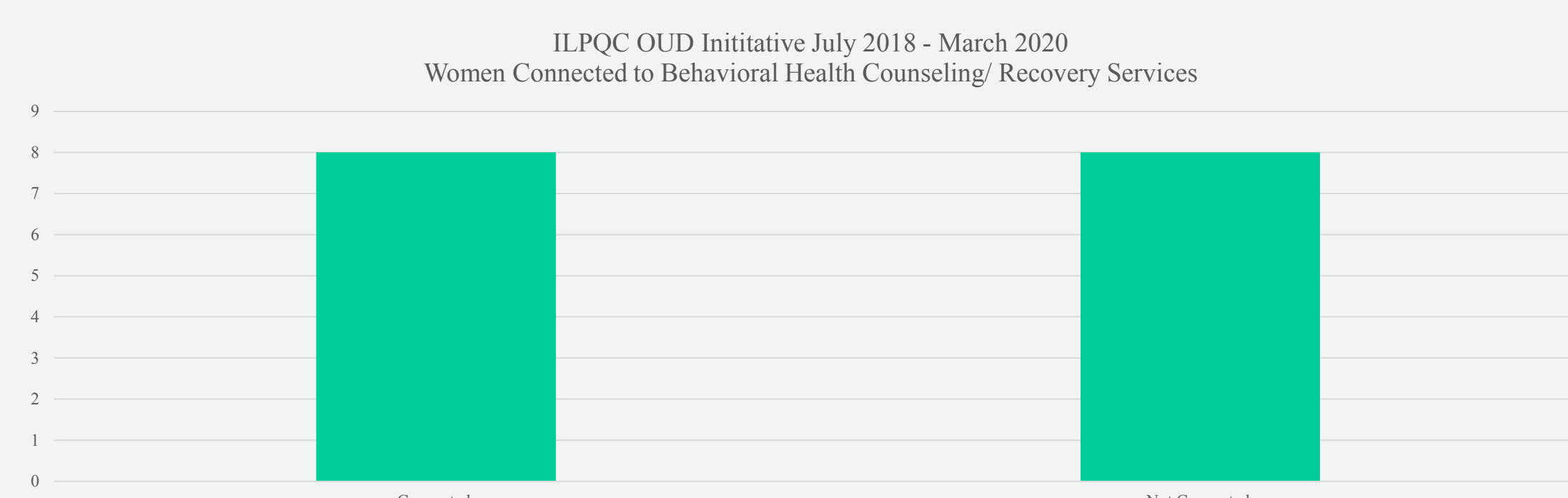
### Screening L&D



### MAT



### Recovery Program/Services



## 4. MNO-OB Progress

### Screening Tools

- SBIRT Screening:
- 5P's Prenatally and L&D
- Medication Assisted Therapy
- OUD Clinical Care Checklist: Admission Reference Antepartum, By Trimester, Delivery and Post-Partum Care

### MNO-OB Folders

- Contraception Handouts and provider references
- Steps for Healthy Grown and Development handouts and provider references
- Community Referral Resources

### Education Campaign

- Opioid Use Disorder
- Pain Plan and Expectations
- Lactation Education & Breastfeeding, Narcan Counseling
- Steps for Healthy Growth and Development
- Contraception

**Monthly Review of all OUD Cases by**  
Review of all OB OUD cases completed by  
Quality review and drill down into patient chart.  
Discussion with QI Team to assess missed opportunities  
and improvements

## 5. IPLARC/IPAC or MNO Overflow

Offer OUD mom's IPLARC parentally and during delivery, follow up with Physician for contraception counseling

Perform IPAC beginning prenatally, during delivery admission and after discharge between 2 -6 weeks, to perform Health Safety checks. Coordinate F/U with MAT provider,

- Provide every patient that screens positive with referral resources and Lactation resources
- Notify provider of positive screen
- Notify Social Work indication of patient readiness to change
- Offer BH and MAT
- EMMI video and email education to stay connected to mom's after discharge

## 6. PVB

Melissa Kelley: OB Director  
Michael Hubbell: OB Physician  
Tanner Colegrove: OB Hospitalist  
Jacqueline Lowry: OB Educator  
Judy Paywal: OB RN  
Heather Brown: Quality Leader

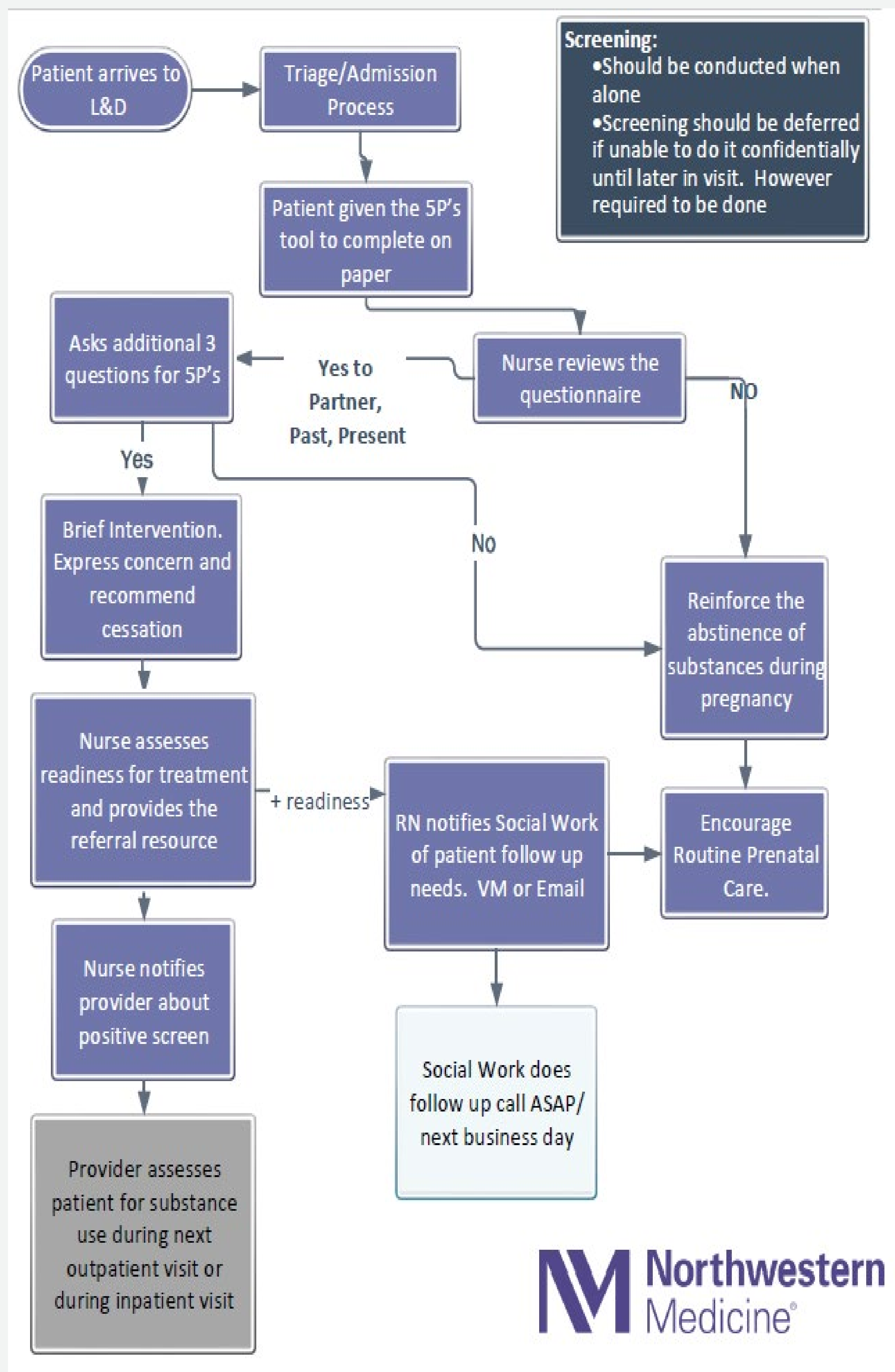
30/60/90 Day Plan: TBA



Use this space for overflow and additional information your team would like to share.

LFH SBIRT –  
EVERY  
PATIENT  
EVERY TIME

Screening,  
Brief  
Intervention  
Referral to  
Treatment



# ILPQC MNO Initiative: Percentage of Sampled Deliveries with Substance Use/ODS Screening Documented Prenatally

