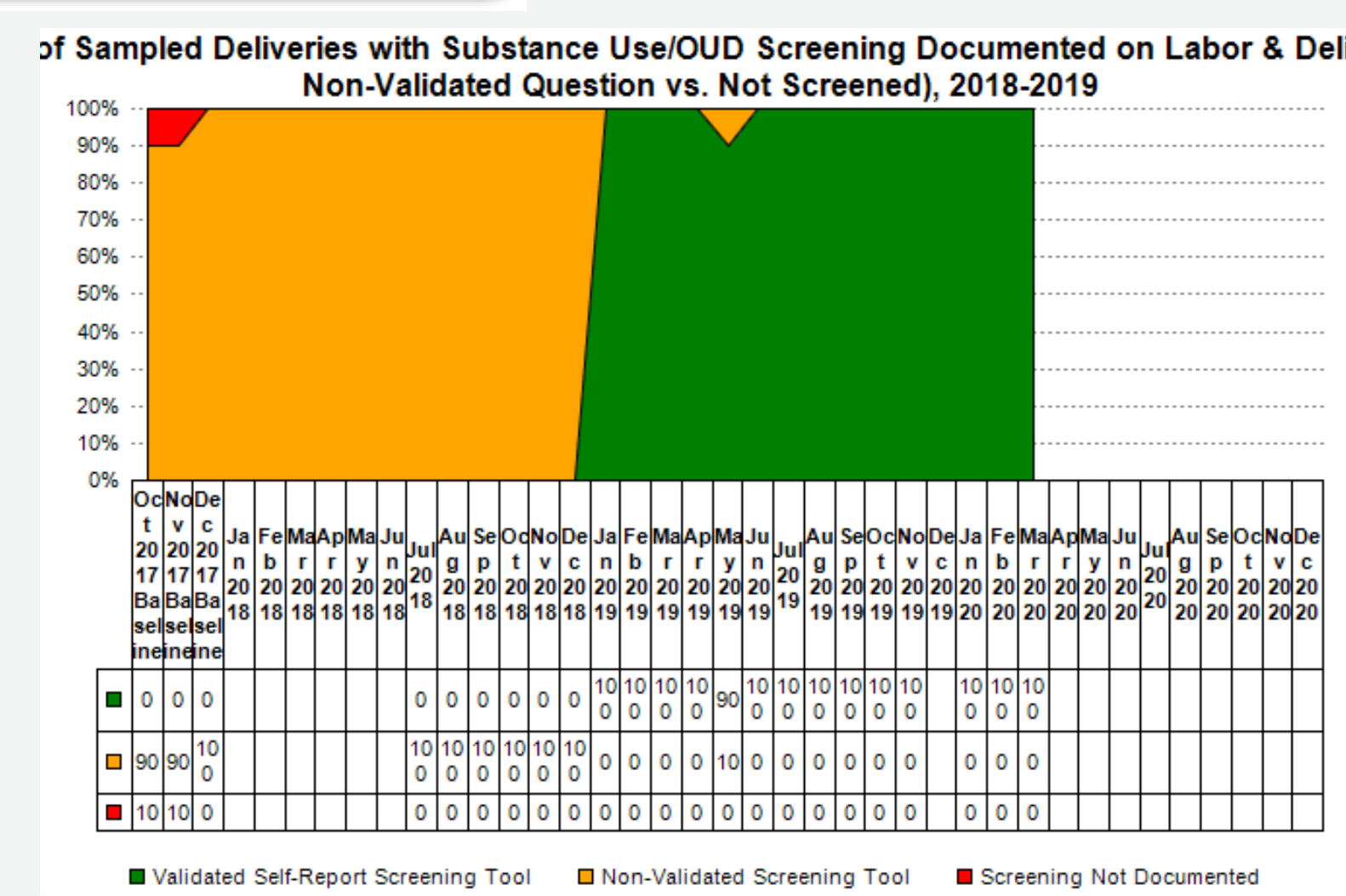
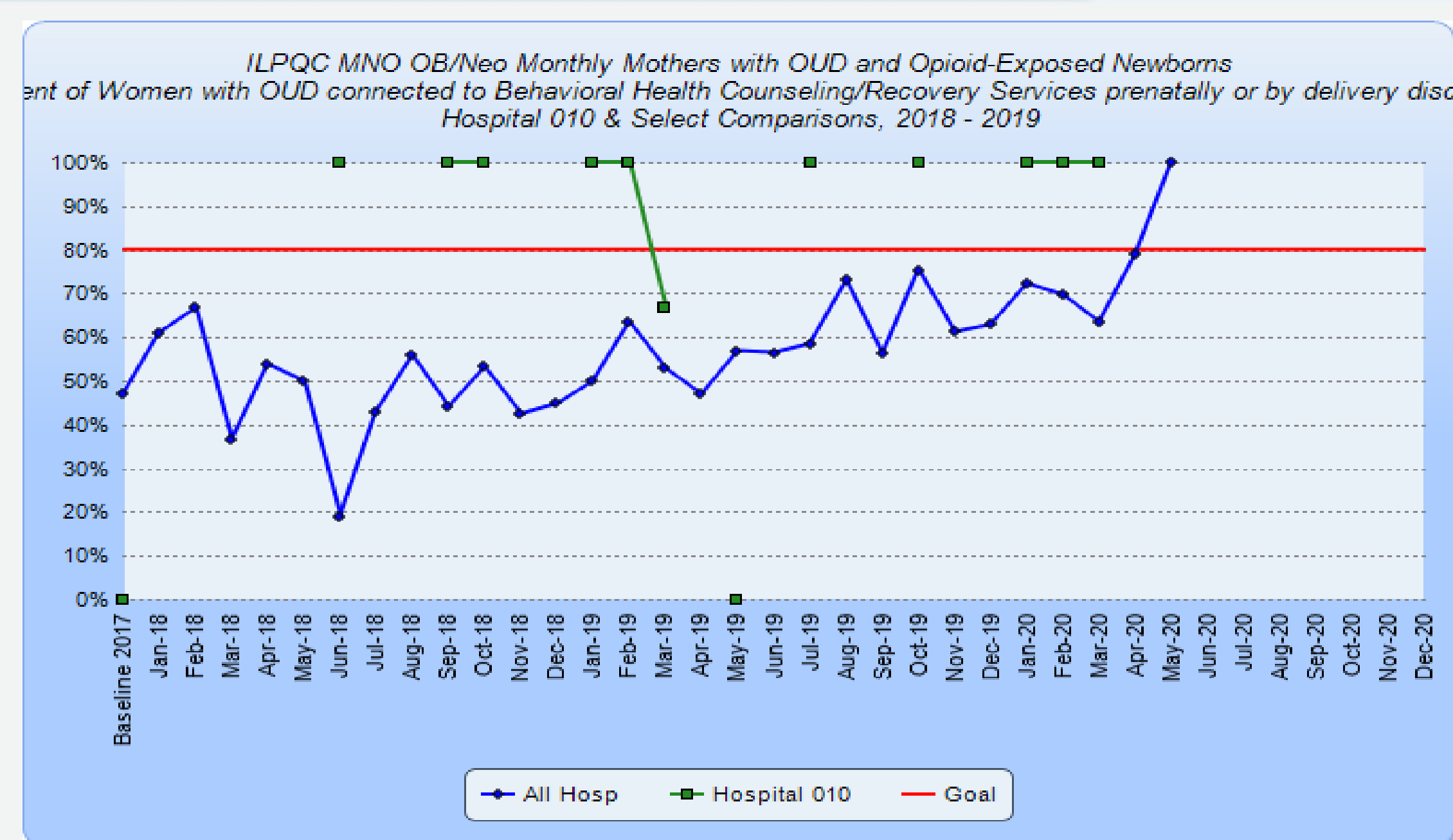


2. Hospital & QI Team Overview

- GOODMAN, JEAN MD, Physician Champion
- BOLAND, TERI RN, Clinical Nurse Specialist
- TORRES ANDERSON, YARA RN, Manager
- DE LA PENA, LAURA RN, Nurse Champion

3. MNO-OB Data



4. MNO-OB Progress

Screening Tools

Continued compliance with screening every patient with the NIDA Quick Screen.

MNO-OB Folders

MNO-OB folders will continue to be stocked by OB quality team with maternal education handouts and MNO checklist included in each folder.

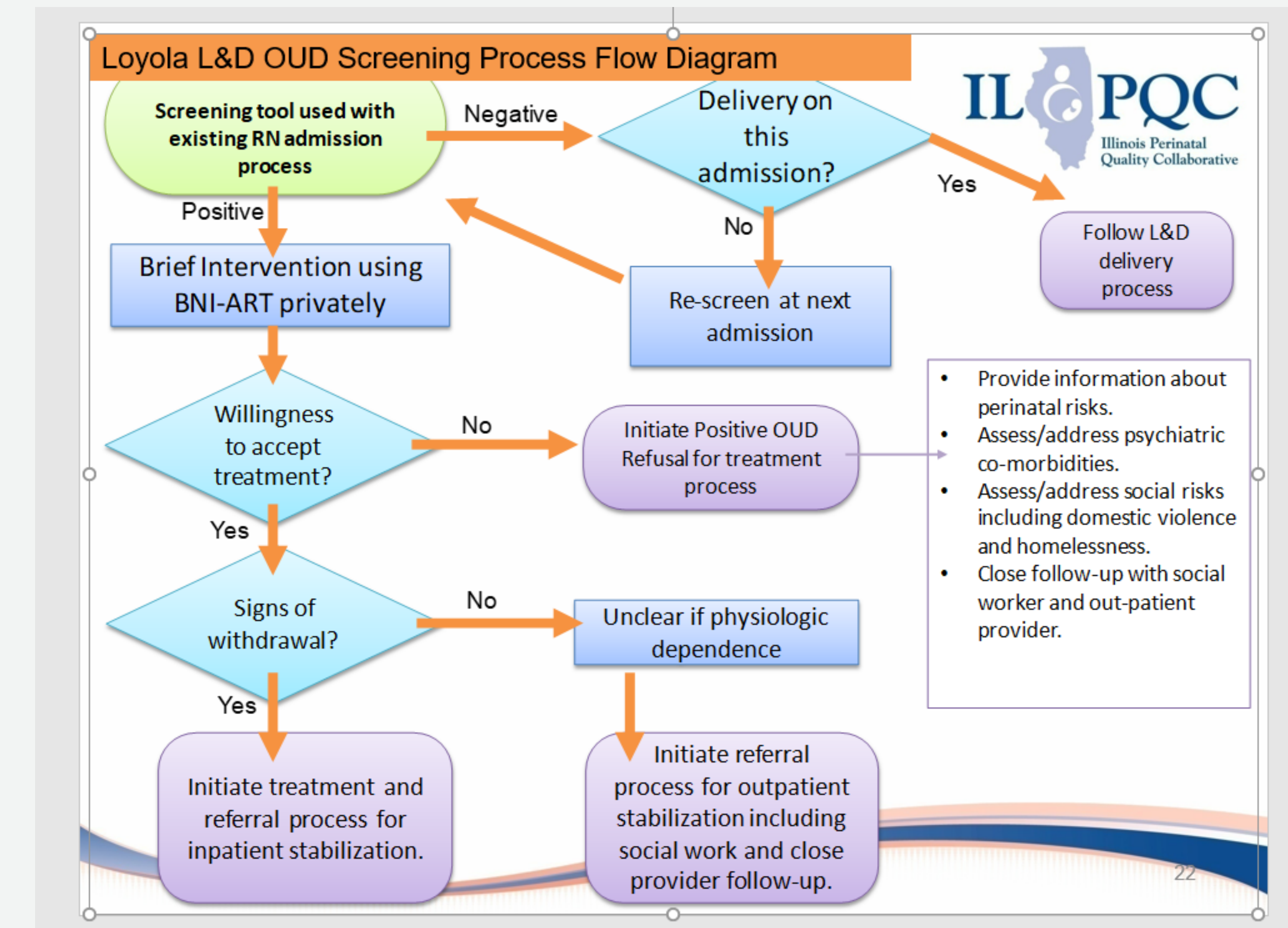
Education Campaign

Utilize Healthstream for 1hr SBIRT IRETA training e-Module and Words Matter e-Module for all new physicians and MNO PowerPoint along with Eat-Sleep-Console education for all new nurses via Healthstream to be completed during orientation.

Monthly Review of all OUD Cases

Monthly review of all OUD cases will continue to be conducted by the OB quality team with NICU collaboration as needed.

5. IPLARC/IPAC or MNO Overflow



IPAC SUSTAINABILITY:

Education for new hires during orientation.
Nurses to ensure 2 and 6 week follow-up appointment is in place before discharge.

6. PVB

PVB QI Team:

30/60/90 day plan

30 day plan: audit charts for baseline data

60 day plan: educating nursing and physicians

90 day plan: implementing system wide policies and protocols.

PVB QI team:

GOODMAN, JEAN MD, Physician Champion

FRENN, RECIA, Physician Champion

BOLAND, TERI RN, Clinical Nurse Specialist

TORRES ANDERSON, YARA RN, Manager

DE LA PENA, LAURA RN, Nurse Champion

<Hospital Logo>

<Hospital Name>

Use this space for overflow and additional information your team would like to share.