



**Strategies to Cross the Finish Line-
Round Robin Part 2:
Screening, MNO Folders, OB
Education, Missed Opp. Review**

March 23, 2020

12:30 – 1:30pm

Overview

- COVID 19 debrief
- Welcome/introductions
- Face-to-Face Meeting
- MNO-OB Strategies for Success
Round Robin

Covid-19



During this time our goal at ILPQC is to continue to be a source of information and support for our hospital teams and team members. Together we will determine how to move forward as we know across Illinois priorities focus on concern for families, friends, colleagues, and patients.

In Memory

Judy Wilson-Griffin, MSN, RNC-OB, C-EFM
SSM Health St. Mary's Hospital



Nursing crosses all barriers and all disciplines, Wilson-Griffin said, and seeing people in good times and bad times has taught her a lot. She tells her students that being clinically proficient won't get them far by itself.

“Anybody can be good technically,” she said “but without compassion, there is always going to be something missing.”

http://www.stlamerican.com/salute_to_excellence/healthcare_luncheon/nursing-excellence-with-compassion/article_3bdec864-ad5e-11e2-9dc9-001a4bcf887a.html

COVID-19 Information for Clinicians Caring for Children and Pregnant Women



- We are committed to supporting each of you on the front lines of this work and will continue to notify you of any materials and resources that we are made aware of. We encourage you to check out the following and share with colleagues:
<https://ilpqc.org/covid-19-information/>
 - [CDC's Guidance for Inpatient Obstetric Healthcare Settings](#)
 - CDC's COCA call on [COVID-19 Update: Information for Clinicians Caring for Children and Pregnant Women](#)
 - [ACOG's Practice Advisory for COVID-19](#)
 - [ACOG's Joint Statement for Elective Surgeries](#)
 - GOLD Learning's webinar on [Caring for Our Community During COVID-19](#)
 - KFF's recently release [COVID-19: Special Considerations for Pregnant and Breastfeeding Women](#)
 - The 4th Trimester Project's patient education website on [COVID-19 For New Moms](#)
- **Webinars:**
 - [CMQCC: Preparing your maternal and neonatal units to respond to COVID-19](#)
 - [SMFM COVID-19 in Pregnancy: Preparing your Obstetrical Units](#)

Face to Face

planning for virtual meeting options



- Given these unprecedented times we are facing with the Covid-19 virus, we are working on plans for **Face to Face to be a virtual meeting**.
- Please register for the meeting and we will update the collaborative as soon as back up plans are in place. There is no fee to participate. If you registered prior to the switch to a virtual meeting, you should have received a refund. Contact us at info@ilpqc.org with questions.



You're Invited!

2020 OB & Neonatal Face-to-Face Meetings

Nurses, Providers, & Staff
join us for an interactive day of
collaborative learning for current
& upcoming ILPQC initiatives!

OB Teams: May 20, 2020

Check-in: 8:00a-9:00a

Meeting: 9:00a-3:30p

Mothers & Newborns affected by Opioids - OB (MNO-OB)
Immediate Postpartum LARC (IPLARC)
Improving Postpartum Access to Care (IPAC)
Promoting Vaginal Birth (PVB)

Neonatal Teams: May 21, 2020

Check-in: 8:00a-9:00a

Meeting: 9:00a-3:30p

Mothers & Newborns affected by Opioids - Neonatal (MNO-Neonatal)
Babies Antibiotic Stewardship Improvement Collaborative (BASIC)

Register now! <https://ilpqc.eventbrite.com>

This activity has been submitted to the Ohio Nurses Association for approval to award contact hours. The Ohio Nurses Association is accredited as an approver of continuing nursing education by the American Nurses Credentialing Center's Commission on Accreditation. (OBN-001-91)

NEW VIRTUAL MEETING

Illinois Perinatal Quality Collaborative
633 N. St. Clair, 20th Floor
Chicago, IL 60611

F2F Storyboard Session

- All teams will bring a storyboard to the session

- Presentation of the 4 key strategies

- For IPLARC/IPAC teams, share your Go Live success and sustainability plans
- For PVB teams, share your PVB QI Team, 30/60/90 day plans for getting started
- See the diagram for examples of how to lay out your storyboard

We are working toward moving this element of our meeting to the virtual platform.



Work in Progress
Please excuse our delays

TO BE AWARDED AT THE MAY 2020 ILPQC OB FACE TO FACE

QI Excellence Awards

ILPQC MOTHERS AND NEWBORNS AFFECTED BY OPIOIDS-OB

QI CHAMPION

QI LEADER: CULTURE & SYSTEMS CHANGE

QI LEADER: SYSTEMS CHANGE

- | | | |
|--|--|--|
| ✓ *All Data Submitted | ✓ All Data Submitted | ✓ All Data Submitted |
| + | + | + |
| ✓ 6 Structure Measures In Place | ✓ 6 Structure Measures In Place | ✓ 6 Structure Measures In Place |
| + | + | |
| ✓ <u>4-6</u> Process Measure goals met** | ✓ <u>1-3</u> Process Measure goals met | (also route for teams with no patients) |

****DETERMINED BY CUMULATIVE DATA FOR QUARTER 1 (JANUARY - MARCH) OF 2020**

**ALL DATA SUBMITTED FOR BASELINE (OCT – DEC 2017) AND JULY 2018 THROUGH MARCH 2020*

**MNO-OB MONTHLY PATIENT DATA, MONTHLY OB STRUCTURE MEASURES, MONTHLY SAMPLE OF DOCUMENTATION OF SCREENING*

Deadline Extended: DATA DUE MONDAY, May 4th by MIDNIGHT

Face to Face MNO-OB QI Awards

- **ALL Patient, Sample of Screening, & Structure Measures Submitted:**
 - Baseline and July 2018 - March 2020 data

note: if any monthly data is missing, including submitting that no patients were discharged that month, a team won't qualify for an award

- **Structure Measures 'IN PLACE' / Green by March 2020:**

- Screening (L&D)
- Screening (Prenatal)
- Mapping
- SBIRT Algorithm
- Checklist
- Patient Education

Can get to green by implementing MNO Folders

Goal is to provide **every** patient with OUD optimal care

- **Process & Outcome Measures Achieved by March 2020:**

- MAT >70% | BH Counseling >70% | Narcan >70% | Hep C >70% | Patient Education >80% | Screening (L&D) >80%

Deadline extended!

DATA DUE MONDAY, May 4th by MIDNIGHT



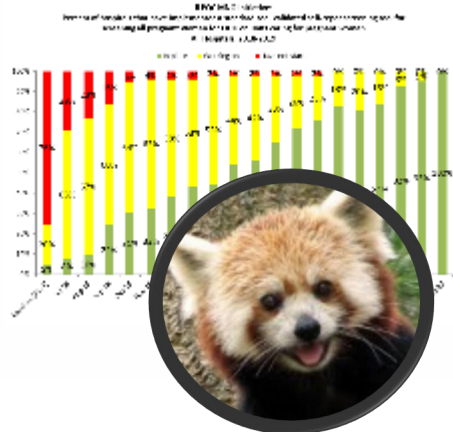
MNO-OB KEY STRATEGIES FOR SUCCESS

REGISTER NOW for on-line
ASAM Treatment of OUD Waiver Trainings

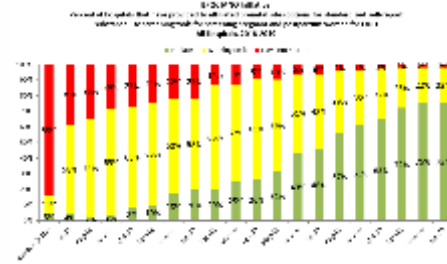


- Wednesday, **April 8** | 8am – 12:30pm | ([Register Here](#))- Online Live Webinar; Hosted by Memorial Hospital Carbondale (open to all of ILPQC)
- Friday, **May 1** | 9am – 1:30pm | (Registration Coming)- Online Live Webinar; Hosted by Javon Bea Hospital (open to all of ILPQC)
- Saturday, **May 2** | 8am – 12:30pm | St. Louis University ([Register Here](#))- St. Louis, IL

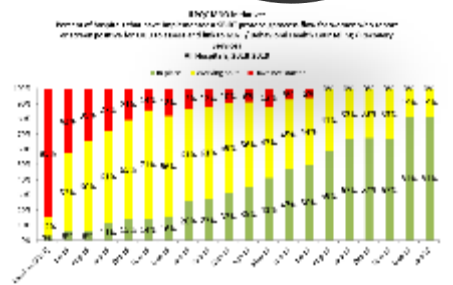
Making Systems Change Happen



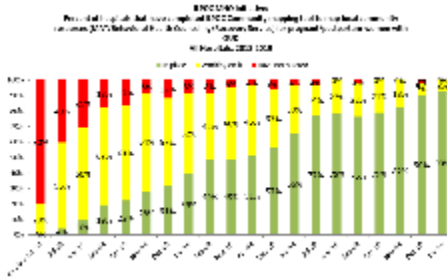
100% of teams have a validated screening tool in place on L&D



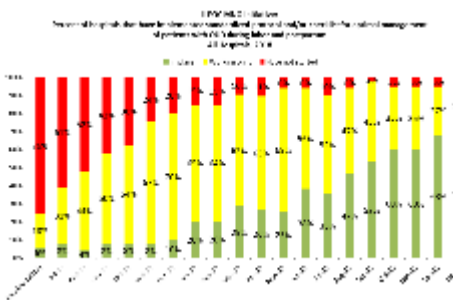
75% of teams have a validated screening tool in place prenatally



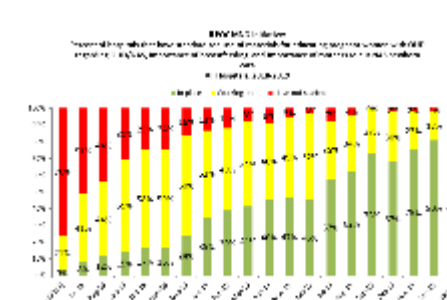
81% of teams have a SBIRT protocol/algorithm in place on L&D



93% of teams have mapped community resources for women with OUD

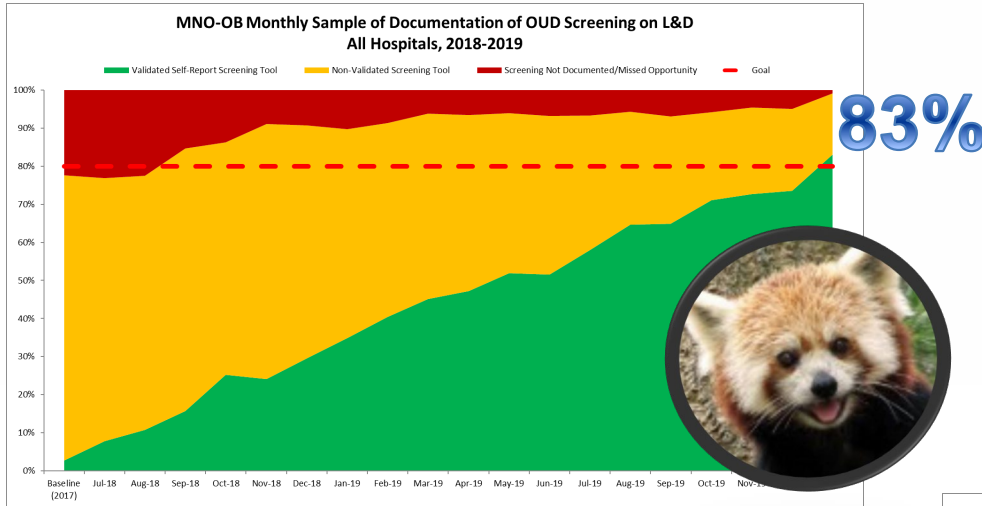


70% of teams have implemented an OUD Clinical Care Checklist on L&D



83% of teams have implemented standardized patient education on L&D

Documentation of Screening for SUD/ODU with Validated Tool

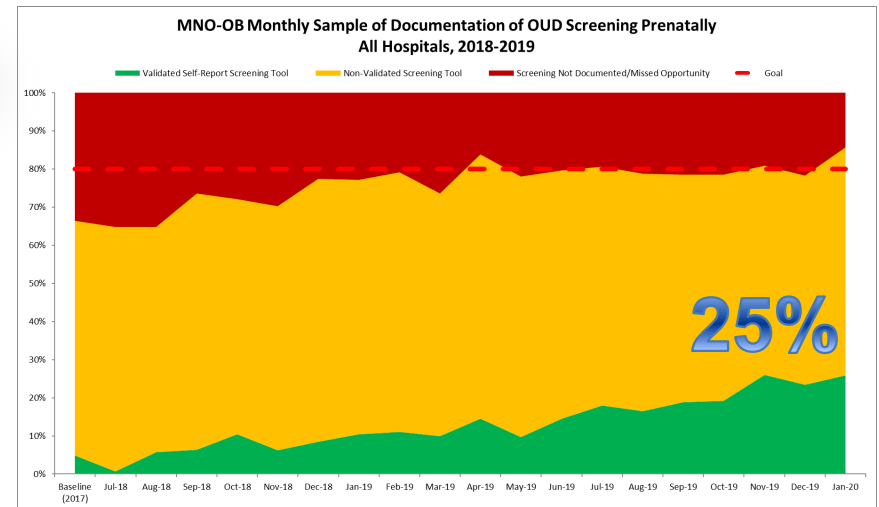


Random sample of 10 deliveries per month reviewed for documentation of SUD/ODU screening
N = 14,970 to date

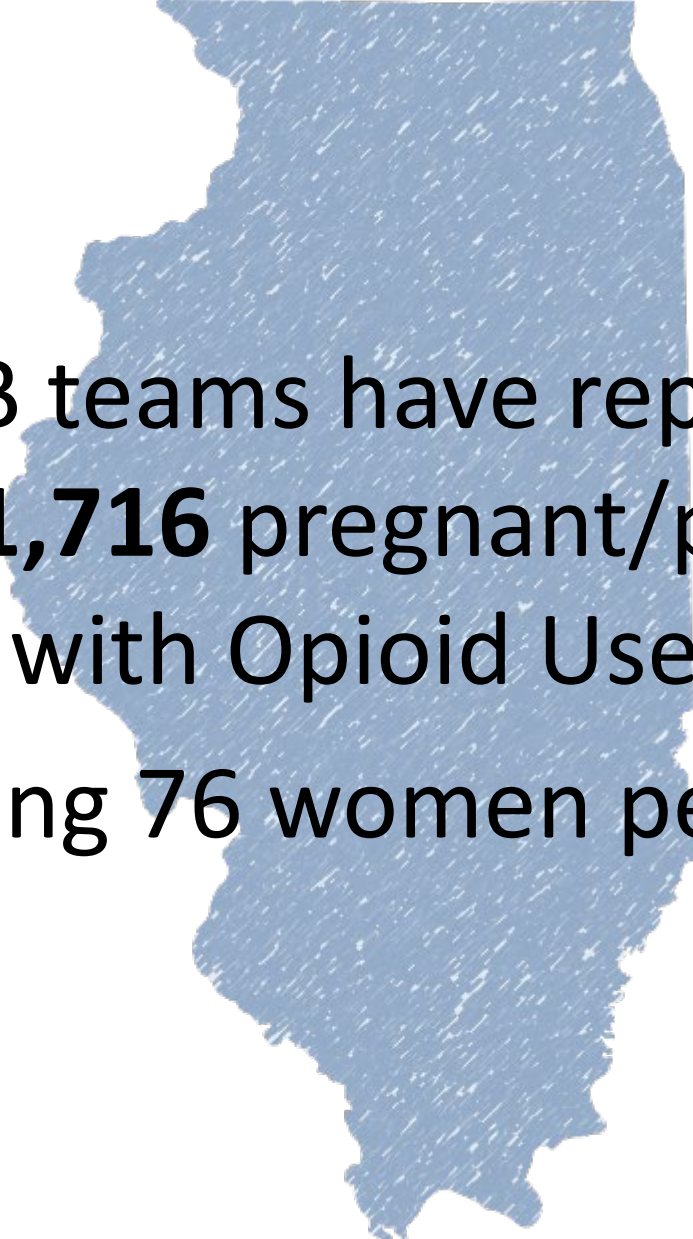
Prenatal

L&D

Red = No screening
Yellow = Screened single question
Green = Screened with validated SUD/ODU screening tool

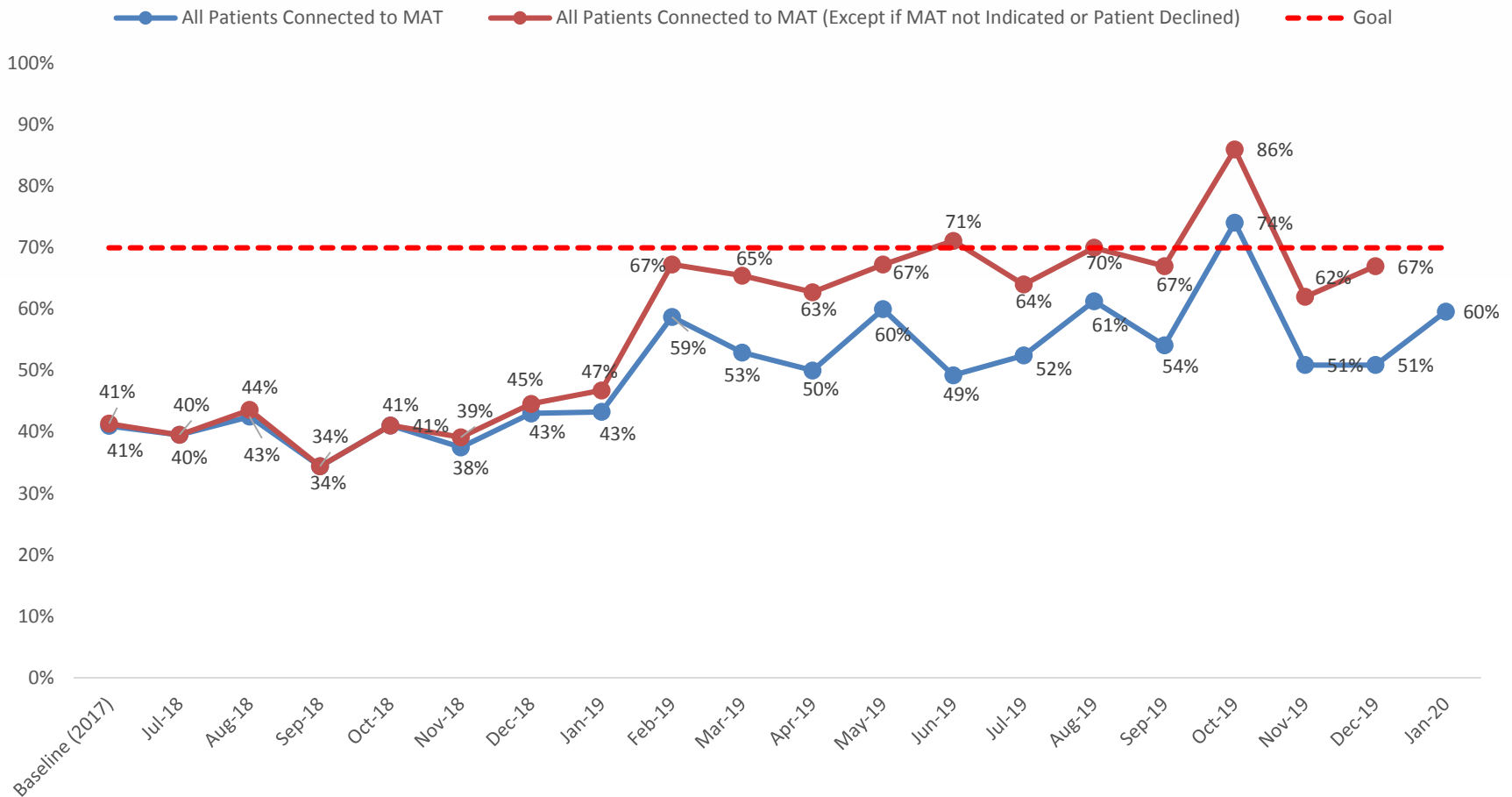


BENCHMARK = ≥ 80%



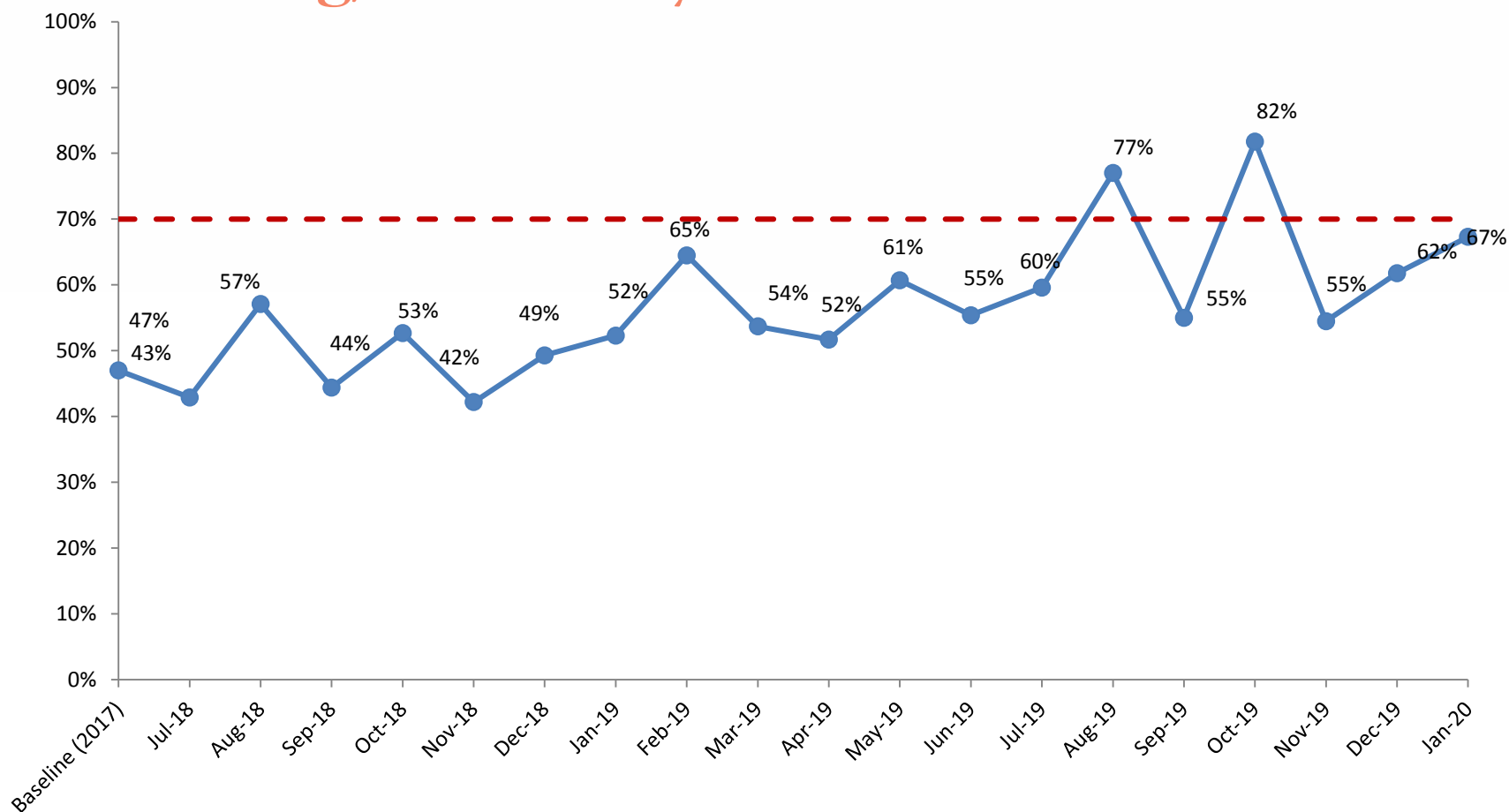
MNO-OB teams have reported data on over **1,716** pregnant/postpartum women with Opioid Use Disorder, averaging 76 women per month

Women with OUD on MAT by Delivery Discharge



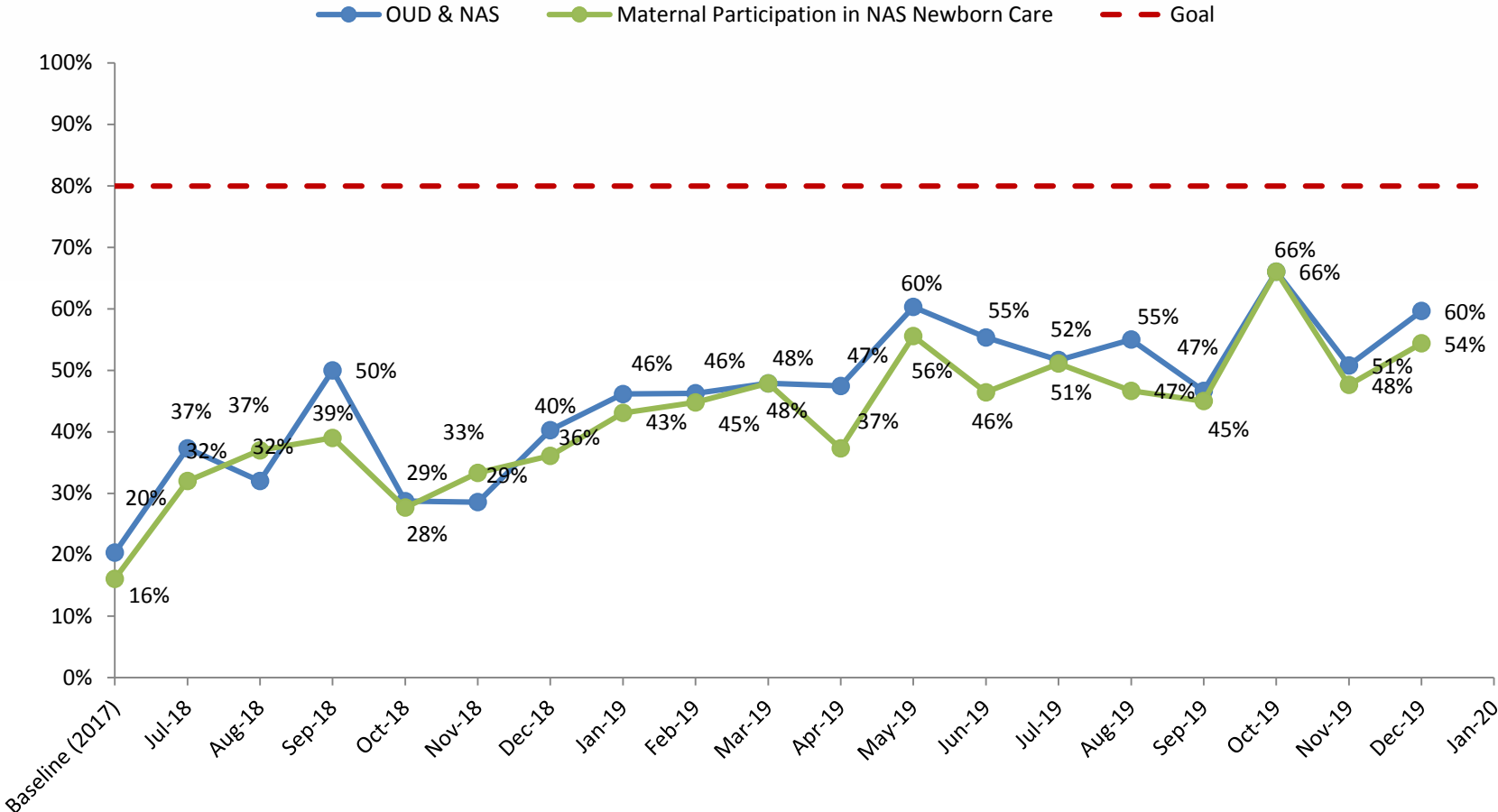
BENCHMARK = ≥ 70%

Women with OUD at Delivery Connected to Behavioral Health Counseling/Recovery Services



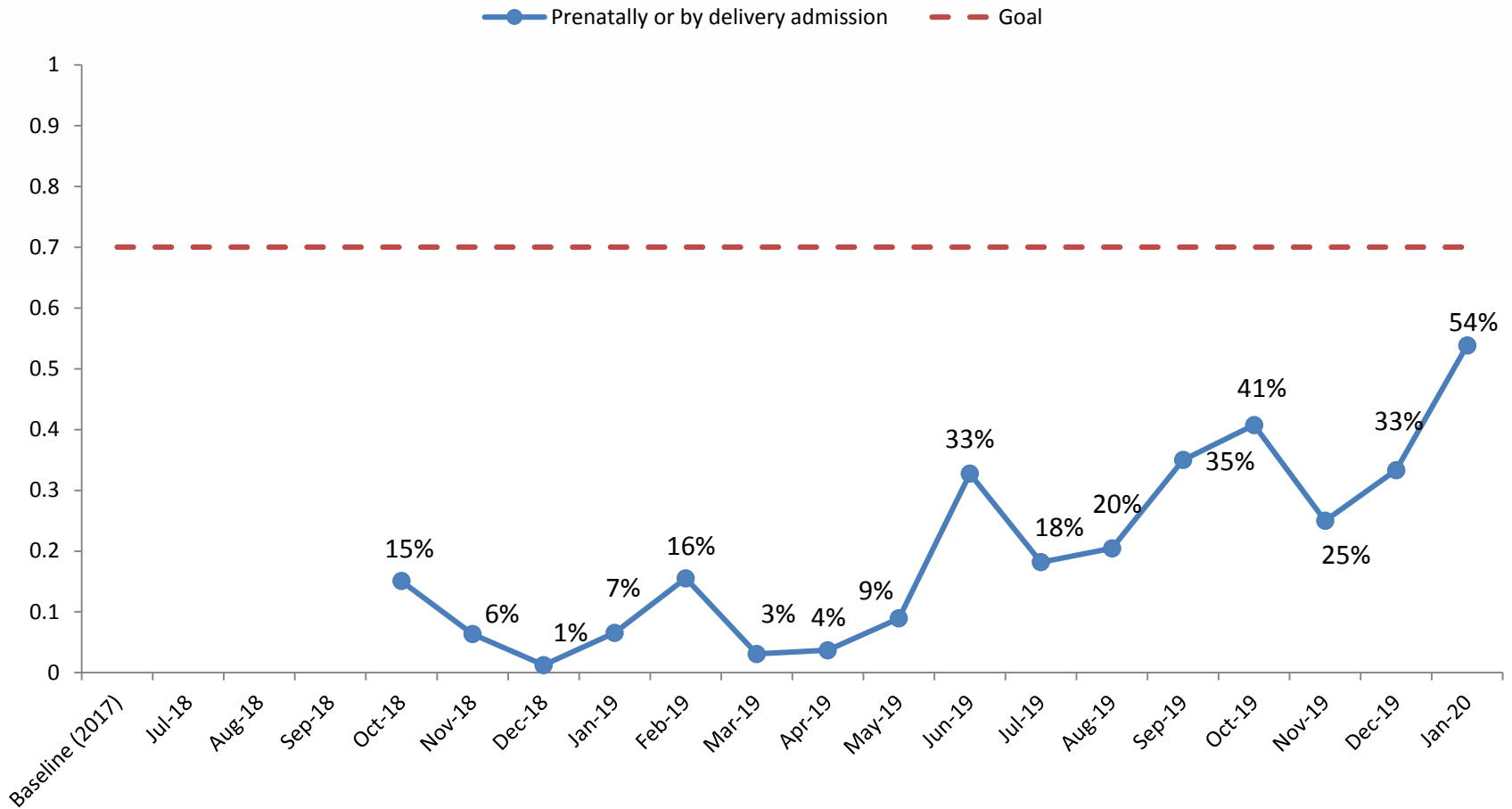
BENCHMARK = \geq 70%

Maternal OUD/NAS Education & Documentation



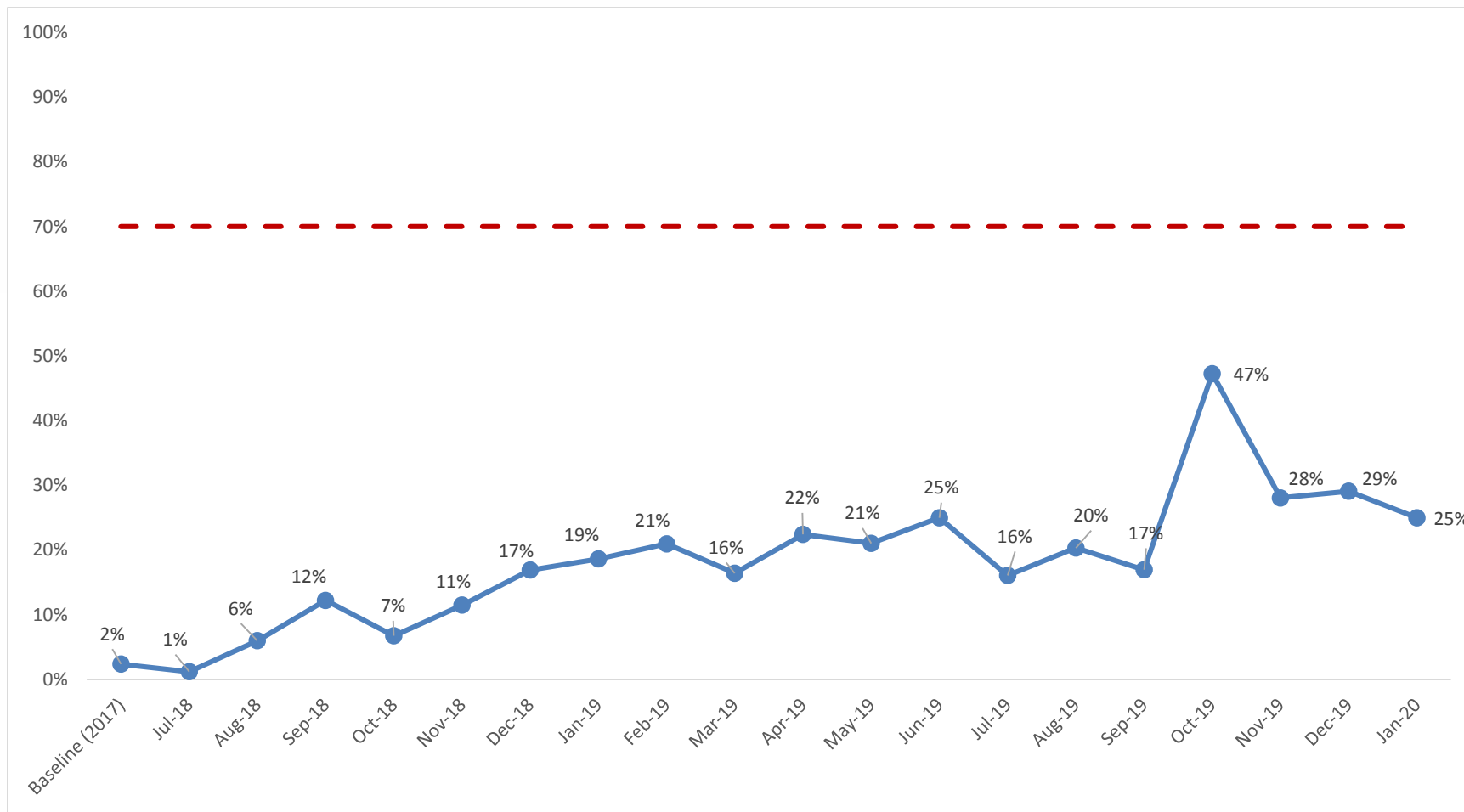
BENCHMARK = ≥ 80%

OUD Clinical Care Checklist Included in Chart (Prenatally or by Delivery Admission)



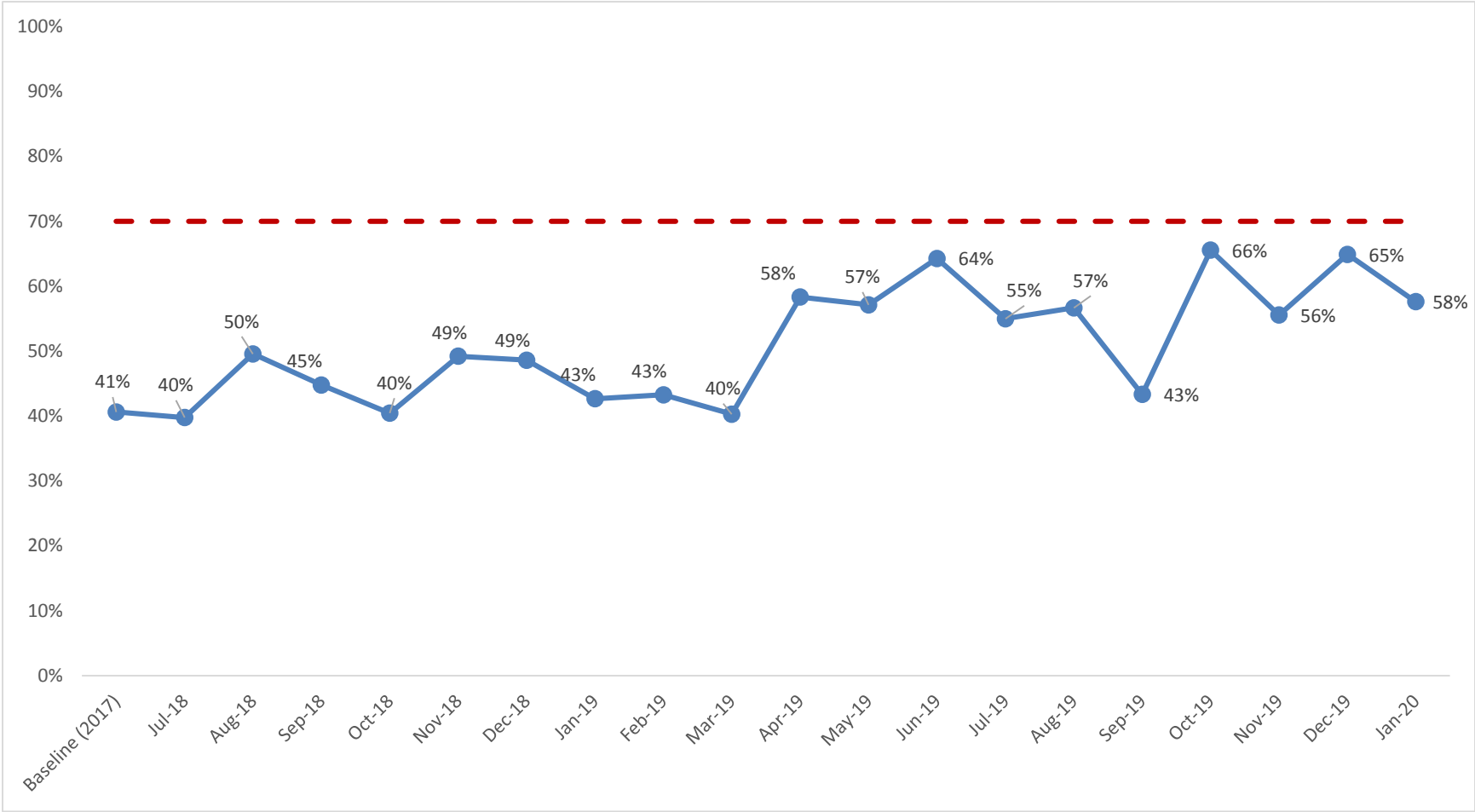
BENCHMARK = $\geq 70\%$

Narcan Counseling & Documentation



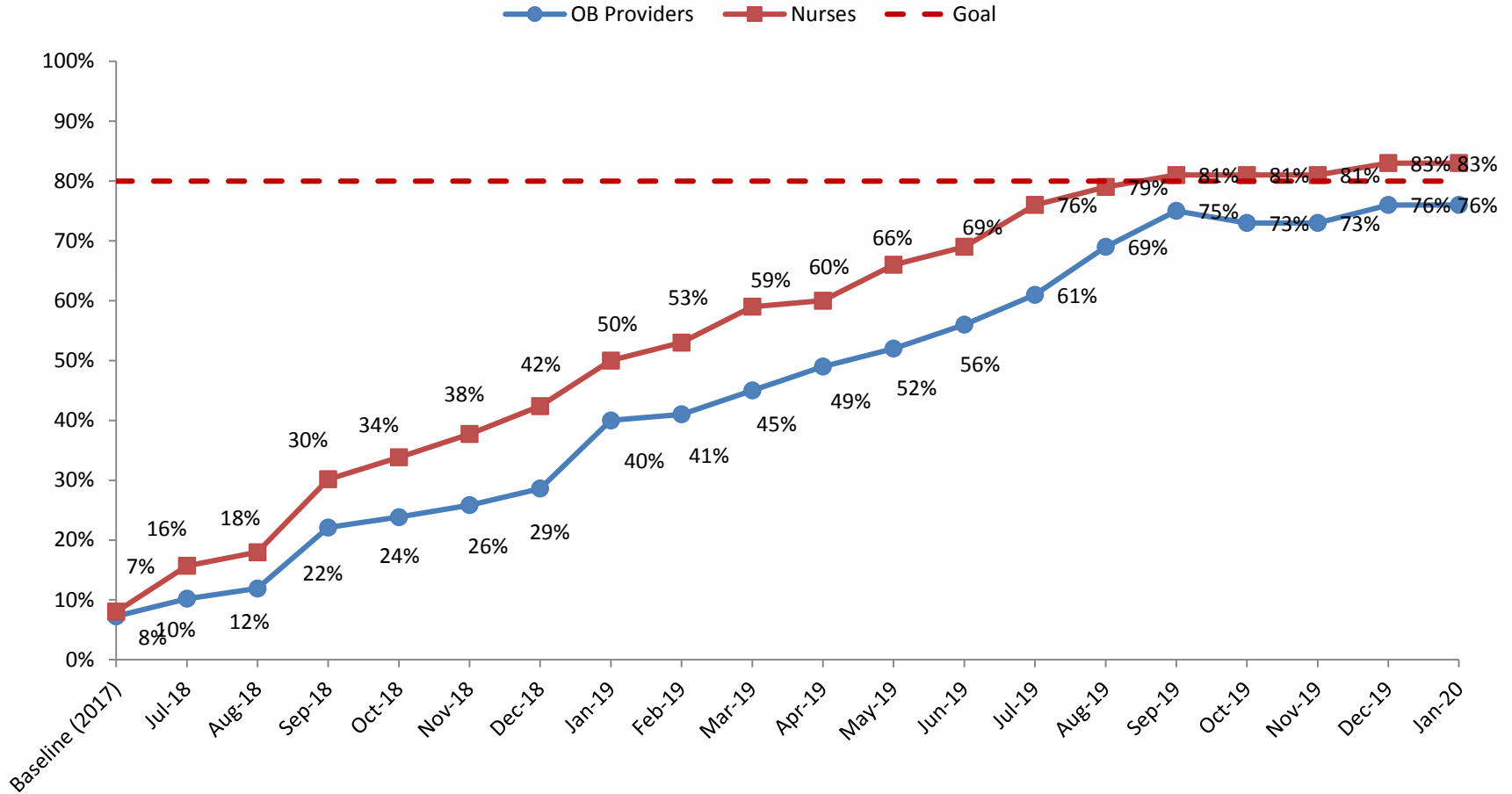
BENCHMARK = ≥ 70%

Hepatitis C Screening & Documentation



BENCHMARK = $\geq 70\%$

OB Provider and Nursing Education



BENCHMARK = ≥ 70%

Women with OUD linked to MAT (Q4 '19) By Network (All Patients)

Network	Hospitals Reporting Patient Data Q4 2019	Hospitals Reporting No Patients Q4 2019	Hospitals with Roster not Submitting Data Q4 2019	No Patients Linked to MAT	Unknown Patients Linked to MAT	Yes Patients Linked to MAT	Total Patients	% Linked to MAT
A	4	3	4	1	0	9	10	90%
B	6	4	5	23	0	62	85	73%
C	4	3	8	4	0	9	13	69%
ILPQC Cumulative Average (Q4 2019)	31	33	36	67	3	100	170	59%
D	2	5	6	3	0	2	5	40%
E	4	4	4	14	3	10	27	37%
F	4	1	4	11	0	6	17	35%
G	4	5	4	6	0	2	8	25%
H	2	2	1	4	0	0	4	0%
I	1	4	2	1			1	0%
J	0	2	2				N/A	N/A

Women with OUD linked to BH Counseling/Recovery Treatment (Q4 '19) By Network

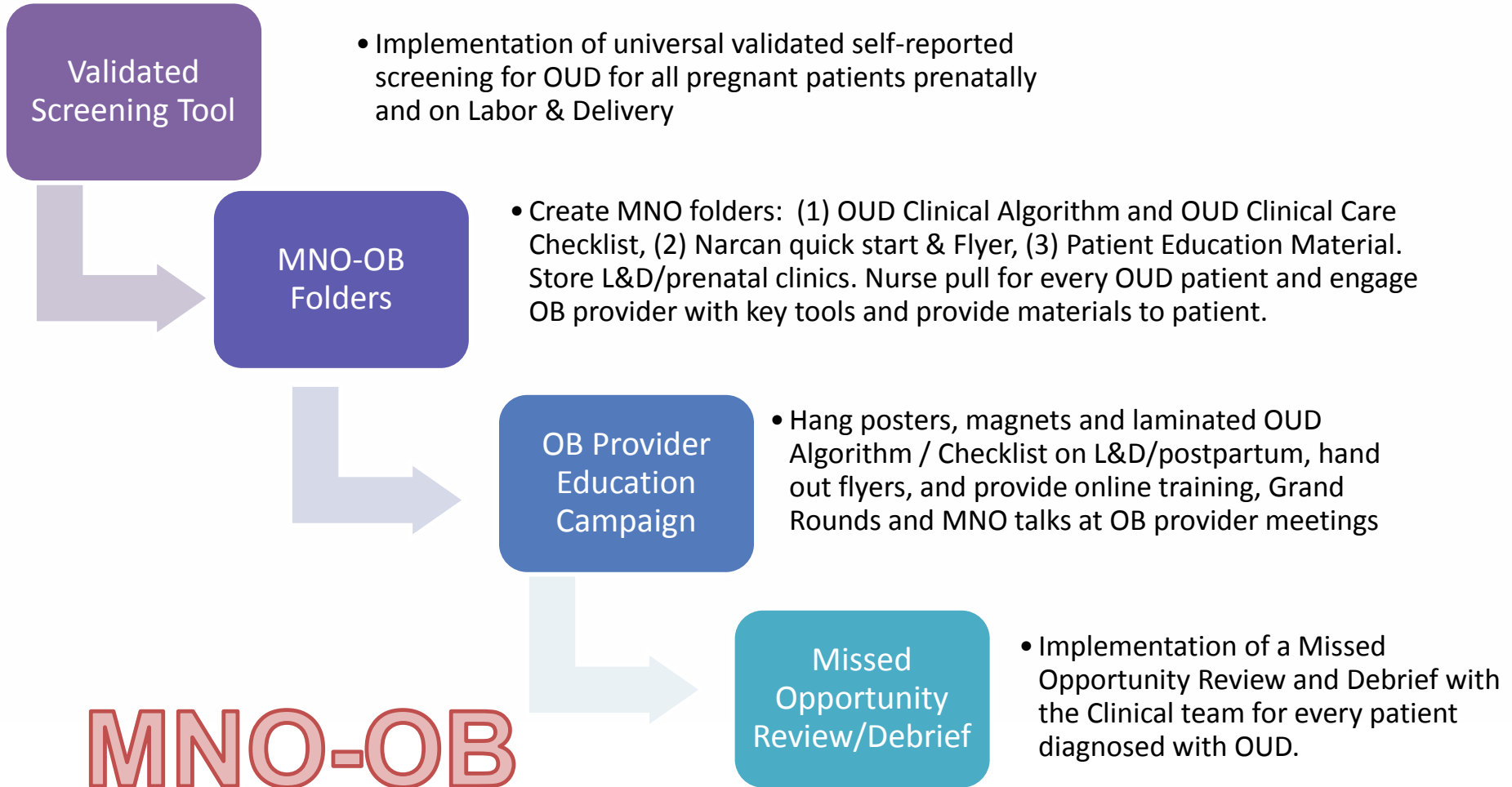
Network	Hospitals Reporting Patient Data Q4 2019	Hospitals Reporting No Patients Q4 2019	Hospitals with Roster not Submitting Data Q4 2019	No Patients Linked to BH	Unknown Patients Linked to BH	Yes Patients Linked to BH	Total Patients	% Linked to BH
A	2	5	6	1	0	4	5	80%
B	6	4	5	17	3	65	85	76%
C	4	3	8	4	0	9	13	69%
ILPQC Cumulative Average (Q4 2019)	31	33	36	50	9	110	169	65%
D	4	5	4	3	0	5	8	63%
E	4	3	4	4	0	6	10	60%
F	4	4	4	9	4	14	27	52%
G	4	1	4	8	2	6	16	38%
H	2	2	1	3	0	1	4	25%
I	1	4	2	1	0	0	1	0%
J	0	2	2					N/A

Women with OUD receiving Narcan/Naloxone Counseling and Prescription (Q4 '19) By Network

Network	Hospitals Reporting Patient Data Q4 2019	Hospitals Reporting No Patients Q4 2019	Hospitals with Roster not Submitting Data Q4 2019	No Patients Narcan	Unknown Patients Narcan	Yes Patients Narcan	Total Patients	% Narcan
A	3	5	5	2	0	3	5	60%
B	7	4	4	28	13	41	82	50%
C	4	3	4	5	0	5	10	50%
ILPQC Cumulative Average (Q4 2019)	35	33	32	84	25	55	164	34%
D	5	5	3	5	1	2	8	25%
E	2	2	1	3	0	1	4	25%
F	4	3	8	9	1	3	13	23%
G	6	4	2	20	7	0	27	0%
H	3	1	5	11	3	0	14	0%
I	1	4	2	1			1	0%
J	0	2	2					N/A

Key Strategies for MNO Success

- What every hospital needs to achieve aims



MNO-OB QI Support Strategies



- ILPQC reached out to MNO-OB teams to provide support to achieve the initiative AIMs including 1:1 QI Support, QI Topic Calls, Regional Strategies for Success, and Letters to share with OB Administration.
- ILPQC will be following up with teams to help support MNO-OB success and engage hospital OB Administration to support the hard work the team's doing.

Implement MNO-OB Folders in 4 Easy Steps

- 1. Print** all materials with one click [here!](#)
- 2. Print** 5-10 to keep in L&D
- 3. Orient & Educate** Providers & Nurses to Folder Contents and Protocol to use for all screen+ patients
- 4. Provide** 2-5 folders for each outpatient site/clinic to utilize

MNO Folder

- ✓ Make folders & store on L&D
- ✓ Train charge nurses to get folder when OUD screen + identified, engage OB providers
- ✓ Share folders with outpatient sites

The diagram shows an open folder with two main sections:

- Patient Education Materials**
 - [Prescription Pain Medicines and Pregnant Women](#)
 - [NAS- You are the Treatment](#)
 - [NAS: What you Need to Know](#)
 - [Contraception Counseling for Women with OUD](#)
- Clinical Team Resources**
 - OUD/SBIRT Clinical Algorithm
 - OUD Clinical Care Checklist
 - [Narcan- Quick start guide](#) & Save a Life Flyer for OB to review and prescribe to patient
 - OUD Protocol
 - Nurse Workflow

Annotations for distribution:

- "Give to and review with Moms" points to the Patient Education Materials.
- "Give to OB to complete" points to the OUD/SBIRT Clinical Algorithm, OUD Clinical Care Checklist, and Narcan- Quick start guide & Save a Life Flyer.
- "For nurse" points to the OUD Protocol and Nurse Workflow.

The folder features the IL PQC logo at the bottom.

If patient screens + for OUD, ask nurse to pull MNO folder for easy access to materials for provider, nurse and patient

Implement OB Provider / Nursing Education Campaign in 3 Easy Steps

1. **Hang** Provider Education Posters / Flyers and OUD/SBIRT Clinical Algorithm on Units
2. **Require** and **implement** eModules for Providers, Nurses, and Staff. Recommended options:
 - [Words Matter: How Language Choice Can Reduce Stigma](#) (30 Min)
 - ILPQC MNO-OB Simulation Guide
 - Stay tuned for a 30 min ILPQC comprehensive eModule with key strategies and finishing strong for sustainability
 - **Request** a Grand Rounds or OB Provider Meeting



Monthly Case Review of All OUD Cases in 4 Easy Steps

1. **Identify** all OUD cases at least monthly
2. QI Team **reviews medical record** to identify missed opportunities for optimal care using the form
3. Nurse champion **provides feedback** to patient's L&D and postpartum nursing team as indicated
4. Provider champion **provides feedback** to prenatal and L&D admission provider as indicated

IL PQC MNO-OB Mothers with OUD
Missed Opportunities Review / Debrief Form

Missed Opportunity Review/Debrief key steps:

1. Identify all OUD cases at least monthly
2. Review medical record to identify missed opportunities for optimal care using this form
3. Nurse champion provide feedback to patient's LD and postpartum nursing team as indicated
4. Provider champion give feedback to prenatal and LD admission provider as indicated

1a. Was patient receiving Medication Assisted Treatment (MAT) prenatally or by delivery discharge?

Yes
 No (if unknown assume no and continue to 1b)

1b. If no, why? Select all that apply (BHC/RTS = Behavioral Health Counseling/Recovery Treatment Services)

OUD not identified prior to delivery AND prenatal care received OR limited to no prenatal care received
 OUD identified, but patient was not counseled/assessed for readiness to start MAT and referral to treatment (SBIRT)
 OUD identified, patient received counseling (SBIRT), but declined BHC/RTS and MAT
 OUD identified, patient received counseling (SBIRT) and was linked to BHC/RTS but declined MAT
 Providers/staff didn't document
 OUD identified, patient received counseling (SBIRT) and ready for MAT, but MAT treatment providers not available
 MAT not indicated. Describe why not: _____

2. Select all the steps in the OUD protocol that were completed prenatally OR during delivery admission unless otherwise noted.

Patient was screened for OUD using a validated screening tool prenatally AND on L&D
 OB provider was notified of positive screen and documented provider assessment of OUD diagnosis
 Patient was counseled (SBIRT) on OUD risks, benefits of treatment, assessed for readiness for treatment (MAT)
 Patient was navigated to MAT
 Patient was navigated to Behavioral Health Counseling/Recovery Treatment Services
 Patient received Behavioral Health Counseling/Recovery Treatment Services
 OUD clinical care checklist in chart
 Prenatal pediatric consult (or during delivery admission) to discuss NAS and non-pharmacologic care of newborn
 Patient received education materials / counseling on OUD / NAS and engaging in opioid exposed newborns care

3a. Does patient have a completed OUD Clinical Care Checklist (completed prenatally or during delivery admission)?

Yes
 No

3b. If no, why? Please select all that apply

OUD not identified by clinical care team
 Providers/staff didn't have access to checklist
 Providers/staff didn't know they needed to complete checklist for patients with OUD
 Providers/staff didn't document care received
 Checklist was in chart but not completed

4. Select all items in the OUD Clinical Care Checklist that were completed prenatally or during delivery admission.

Referral to BH Services/Recovery Treatment Services
 MAT provided and documented
 Narcan counseling and prescription offered and documented
 Hepatitis C screening and provided and documented
 Contraception Counseling provided and documented
 Behavioral Health/Social Work Consult provided and documented
 OUD/NAS Neonatal/Pediatric consult provided and documented
 Education on OUD and Engaging in Opioid Exposed Newborn Care provided and documented
 Close OB follow up visit scheduled (if postpartum an early OB postpartum visit scheduled within 2 weeks)
 Warm handoffs / close follow up used to link to services and treatment

Version 2, date 10/31/2019

MNO-OB DATA REVIEW



Snowy Crowned Robin

ROUND ROBIN: SHARING KEY STRATEGIES FOR SUCCESS

Please share your MNO-OB Team's status...



- ✓ How is your QI team and QI projects in this new climate?
- ✓ How has your team implemented a universal validated screening tool prenatally and on LD?
- ✓ What system(s) have you put into place to ensure success for your MNO Folders?
- ✓ OB Provider / Nursing Education Campaign – what you've specifically done so far and what you're planning to do in the next month
- ✓ Monthly case reviews of all OUD cases & providing feedback to the clinical team (Missed Opportunities)

Thanks to who shared last month!



- Abraham Lincoln Memorial Hospital
- **Advocate BroMenn Medical Center**
- Advocate Christ Medical Center
- **Advocate Condell Medical Center**
- Advocate Good Samaritan Hospital (Sharing in March)
- Advocate Good Shepherd Hospital
- Advocate Illinois Masonic Medical Center (Sharing in March)
- Advocate Lutheran General Hospital
- Advocate Sherman Hospital
- Advocate South Suburban Hospital
- Alton Memorial Hospital
- **AMITA Alexian Brothers Women's and Children's Hospital at St. Alexius**
- AMITA Health Adventist Glen Oaks Hospital
- AMITA Health Adventist Medical Center - Bolingbrook
- AMITA Health Adventist Medical Center Hinsdale
- **AMITA Health Alexian Brothers Medical Center**
- AMITA Health Saints Mary and Elizabeth Medical Center
- AMITA Health St. Francis - Evanston
- **AMITA Health St. Joseph Hospital - Chicago**
- AMITA Health St. Mary's Hospital
- AMITA Mercy Medical Center
- AMITA Resurrection Medical Center
- Anderson Hospital
- **Barnes-Jewish Hospital**
- Blessing Hospital
- **Carle Foundation Hospital**
- CGH Medical Center
- Crawford Memorial Hospital
- Decatur Memorial Hospital
- **Edward Hospital**
- **Elmhurst Memorial Hospital**
- FHN Memorial Hospital
- Galesburg Cottage Hospital
- Gateway Regional Medical Center
- Gibson Area Hospital
- Graham Hospital

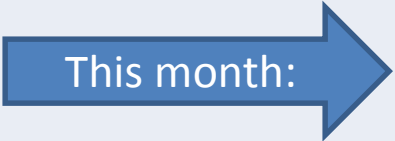
Anybody on this list who didn't have a chance to share last month? We'd love to hear your progress!

Hospitals Sharing Today...



- Advocate Good Samaritan Hospital
- Advocate Illinois Masonic Medical Center
- Highland Park Hospital
- HSHS Holy Family Greenville
- HSHS St. Elizabeth's Hospital
- HSHS St. Francis Hospital - Litchfield
- HSHS St. Mary's Hospital - Decatur
- Illinois Valley Community Hospital
- Ingalls Memorial Hospital
- Iroquois Memorial Hospital
- Javon Bea Hospital - Riverside
- Katherine Shaw Bethea (KSB) Hospital
- Little Company of Mary Hospital
- Loyola University Medical Center
- MacNeal Hospital
- Memorial Belleville Hospital
- Memorial Hospital Carthage Illinois
- Memorial Hospital East
- Memorial Hospital of Carbondale
- Memorial Medical Center
- Mercy Hospital & Medical Center - Chicago
- Morris Hospital and Health Care Centers
- Mount Sinai Hospital
- NM Central DuPage Hospital
- NM Delnor Hospital
- NM Huntley Hospital
- NM Kishwaukee Hospital
- NM Lake Forest Hospital
- NM McHenry Hospital
- NorthShore University Health System - Evanston Hospital
- Northwest Community Hospital
- Northwestern Memorial Hospital
- Norwegian American Hospital
- OSF Healthcare Sacred Heart Medical Center
- OSF Heart of Mary Medical Center
- OSF St. Anthony Medical Center- Rockford
- OSF St. Elizabeth Medical Center
- OSF St. Francis Medical Center
- OSF St. James - John W. Albrecht Medical Center

Upcoming MNO-OB Teams Calls

Date	Topic
February 24 th , 2020	Strategies to Cross the Finish Line- Round Robin Screening, MNO Folders, OB Education, Missed Opp. Review Hospitals with full names (including health system) starting with A-G
March 23 rd , 2020 	Strategies to Cross the Finish Line- Round Robin Screening, MNO Folders, OB Education, Missed Opp. Review Hospitals with full names (including health system) starting with H-O
April 27 th , 2020	Strategies to Cross the Finish Line- Round Robin And Preparing for Sustainability Hospitals with full names (including health system) starting with P-W

Other opportunities for collaborative learning: Regional strategies discussion at your regional perinatal network meetings to discuss key strategies implementation
 – 7 regional strategies meetings completed, 2 more scheduled

Moving forward...



- Take care of yourselves, your families, your colleagues and your patients, understanding QI work is important but may not be your teams first priority during this time.
- Review your MNO-OB data compared to the collaborative with your QI Team
- Review the key strategies for success with your QI Team and share strategies that you learned on this call from other hospitals
- Discuss what is needed for your team to cross the finish line with MNO and receive MNO-OB QI Award.
- Create a 10-20-30 day Crossing the Finish Line Plan to help your team plan and implement next steps



THANKS TO OUR

FUNDERS



JB & MK PRITZKER

Family Foundation

Email info@ilpqc.org or visit us at www.ilpqc.org