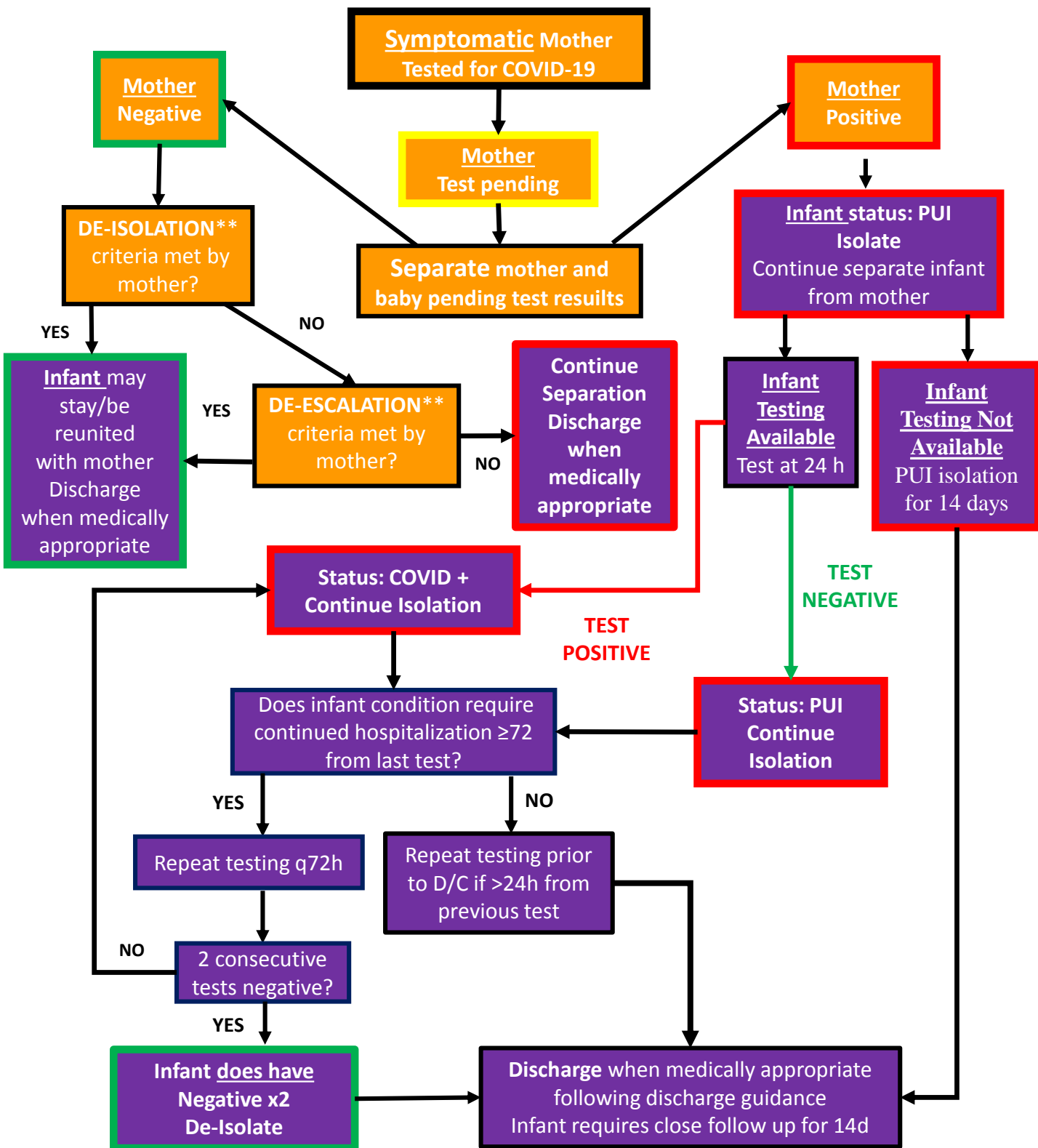


SYMPTOMATIC Mother COVID Testing NICU and Well Newborn Workflow Guidance

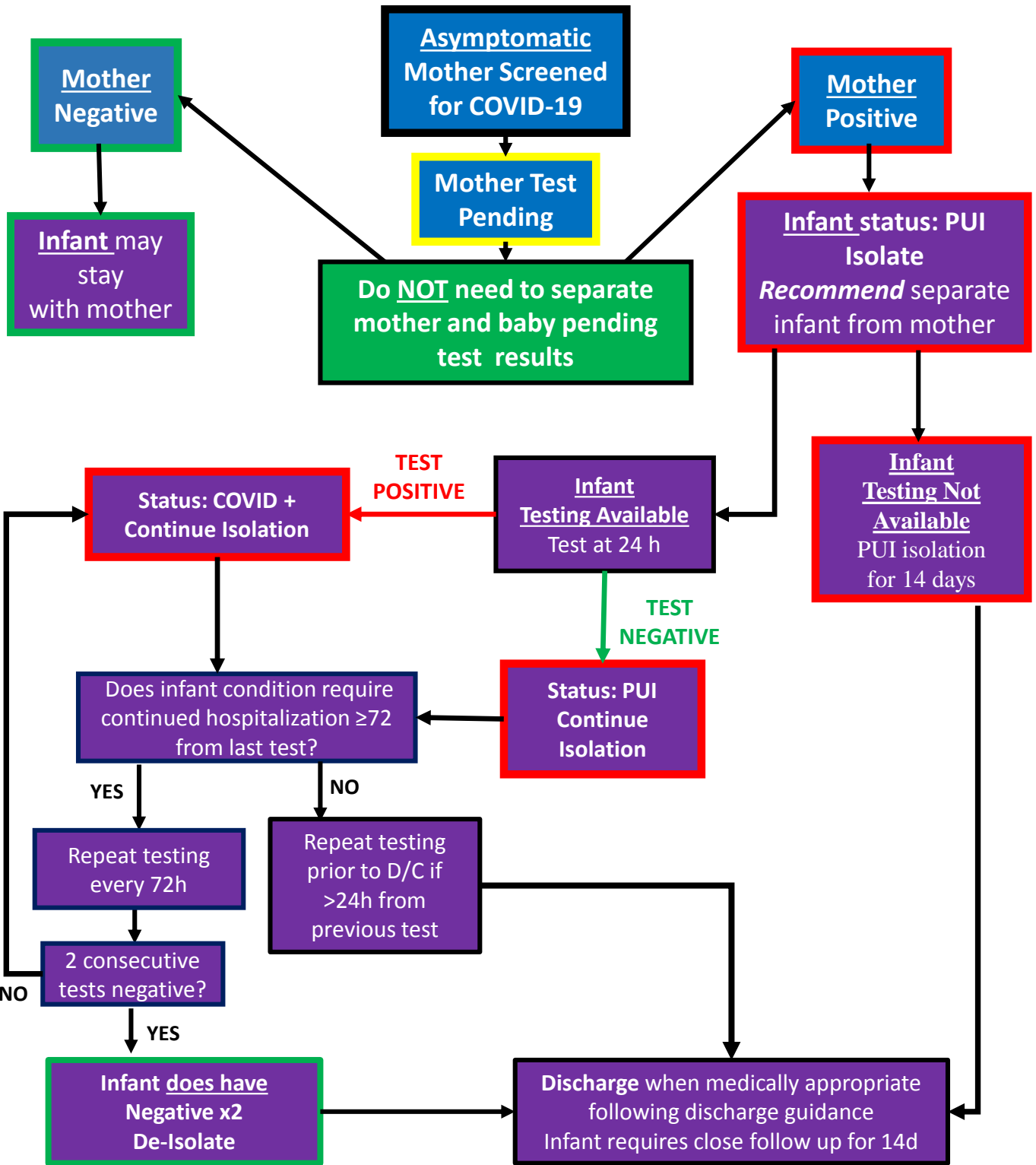


*Refer to AAP FAQ for more information.

American Academy of Pediatrics Committee on Fetus and Newborn, Section on Neonatal Perinatal Medicine, and Committee on Infectious Diseases on April 2, 2020

** Follow De-escalation and De-Isolation Guideline

ASYMPTOMATIC Mother COVID Screening NICU and Well Newborn Workflow Guidance



*Refer to AAP FAQ for more information.

American Academy of Pediatrics Committee on Fetus and Newborn, Section on Neonatal Perinatal Medicine, and Committee on Infectious Diseases on April 2, 2020

** Follow De-escalation and De-Isolation Guideline