

## 2. Hospital & QI Team Overview

QI Team: Natosha McEvers, Kelly Harre, Desi Davies & Mona Legrand



## 4. MNO-OB Progress

### Screening Tools: 5 P's PLUS

Interventions  
LD Prenatal Substance Abuse Screening ONE TIME ✓

Assessments  
Prenatal Substance Abuse Screen ✓  
Prenatal Substance Abuse Screen

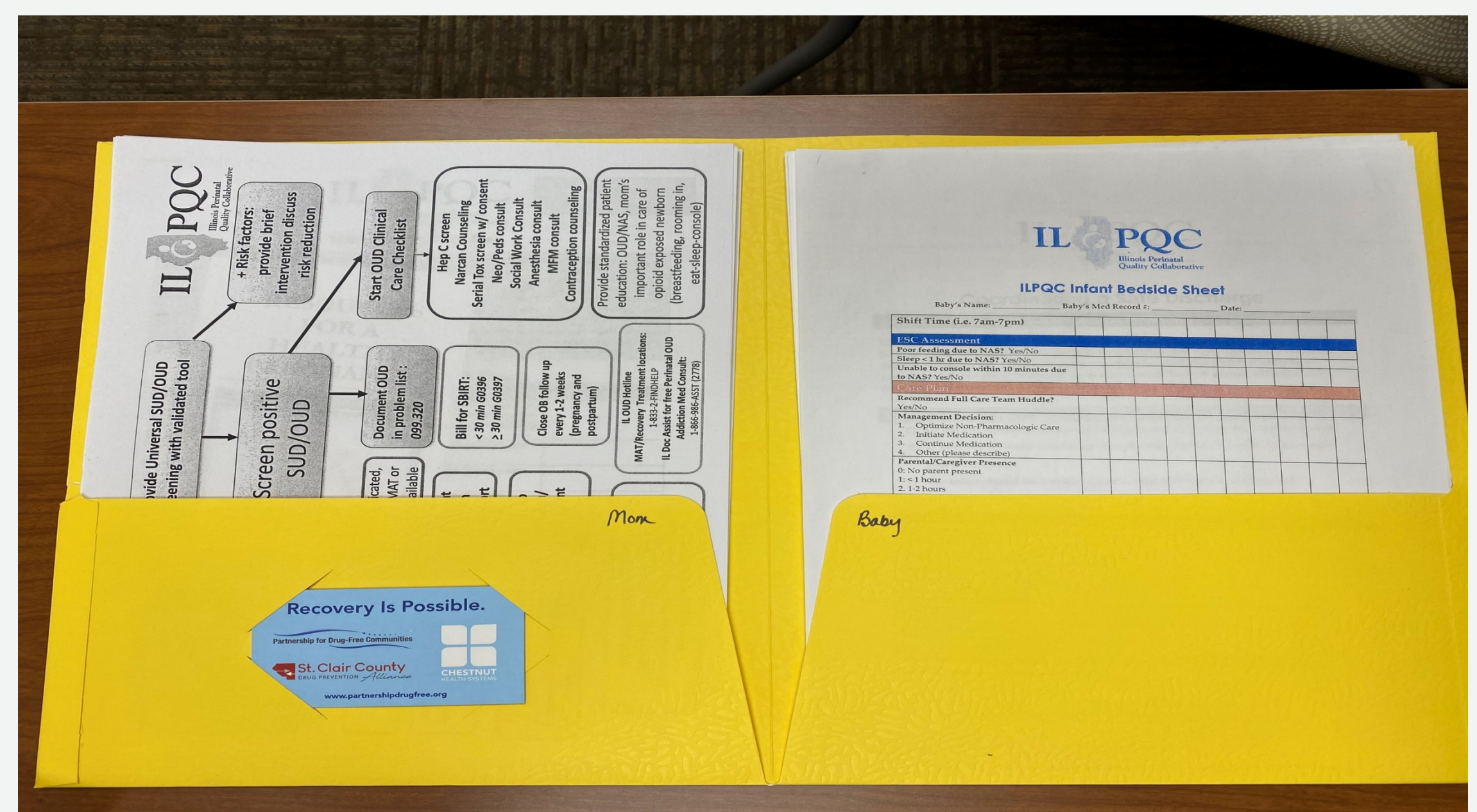
\* Advise the client responses are confidential.  
\* A single "Yes" to any of these questions indicates further assessment is needed.

Did Any of Your Parents Have Problems With Alcohol or Drug Use? ☐ Yes ☐ No  
Did Any of Your Friends (Peers) Have Problems With Alcohol or Drug Use? ☐ Yes ☐ No  
Does Your Partner Have a Problem With Alcohol or Drug Use? ☐ Yes ☐ No  
Before You Were Pregnant Did You Have Problems With Alcohol or Drug Use? (Past) ☐ Yes ☐ No  
In The Past Month, Did You Drink Beer, Wine or Liquor, or Other Drugs? (Pregnancy) ☐ Yes ☐ No

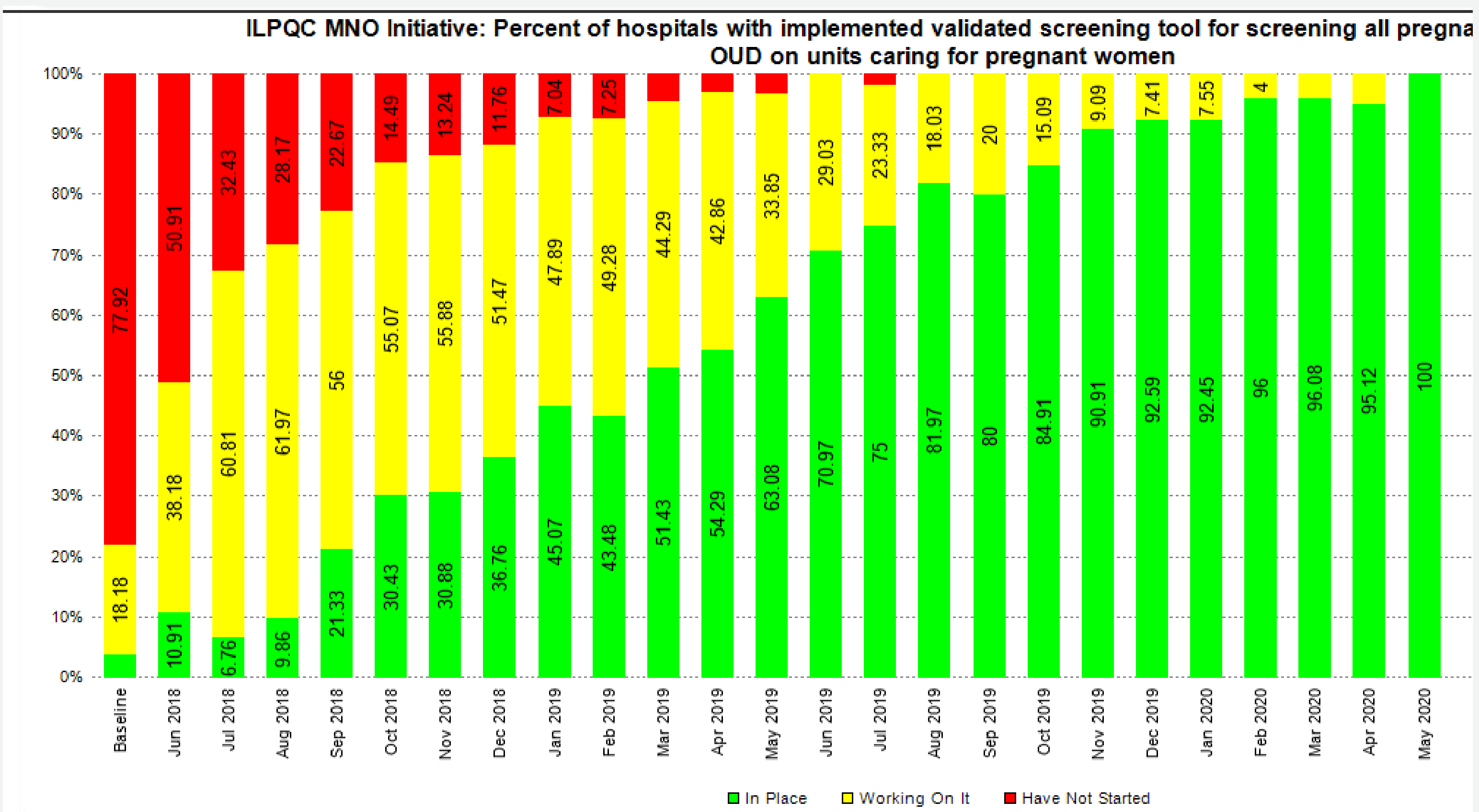
Follow-Up Questions  
\* Women who screen high risk for substance use should be assessed for opioid use.  
Have You Used Any Opioids, Narcotics, or Pain Meds in The Last Year? ☐ Yes ☐ No  
Were They Prescribed or Unprescribed? ☐ Prescribed ☐ Unprescribed  
Comment

Resource  
Resource Brochure Provided ☐ Yes ☐ No  
Comment

### MNO-OB Folders

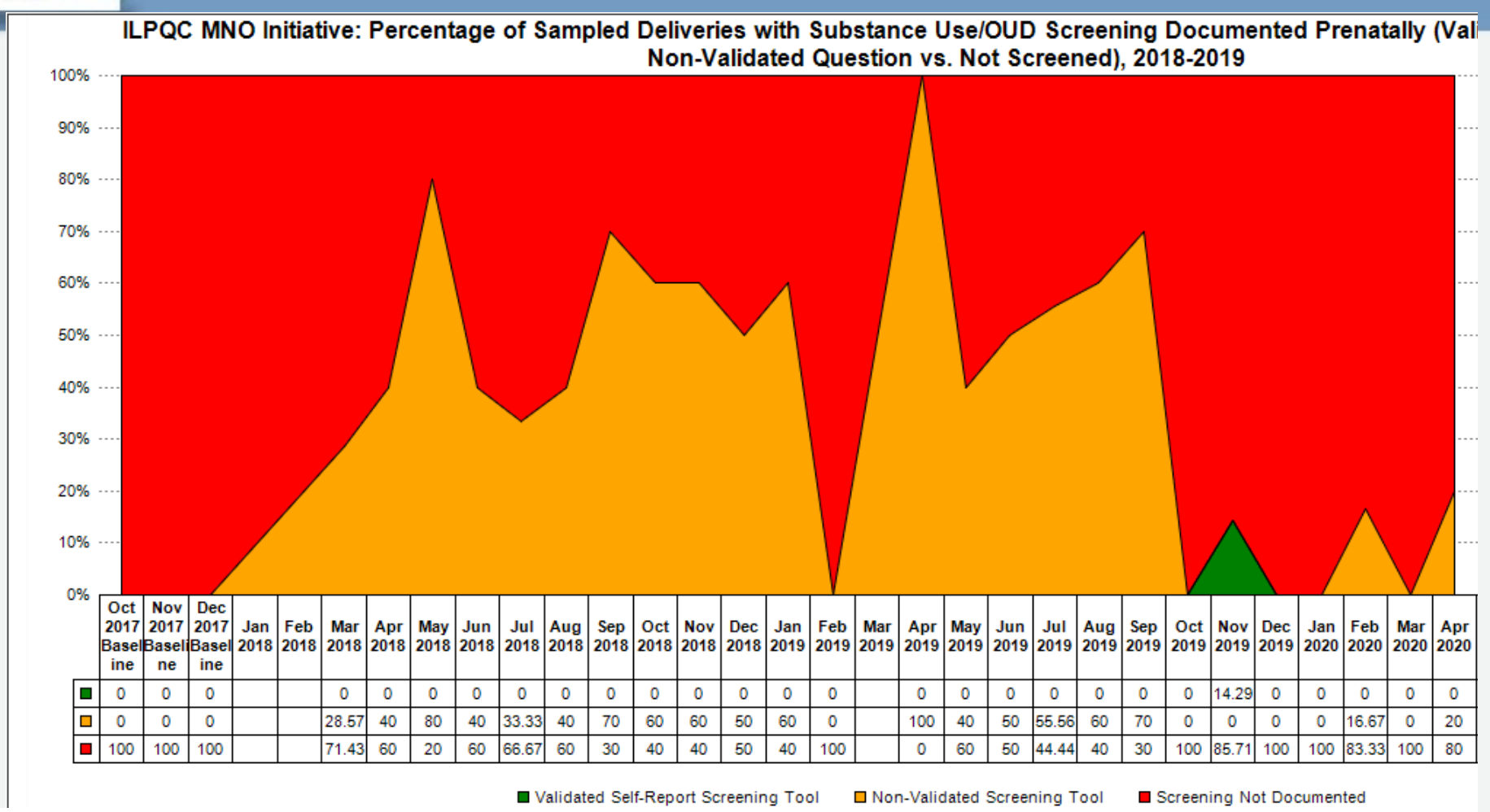


## 5. IPLARC/IPAC or MNO Overflow

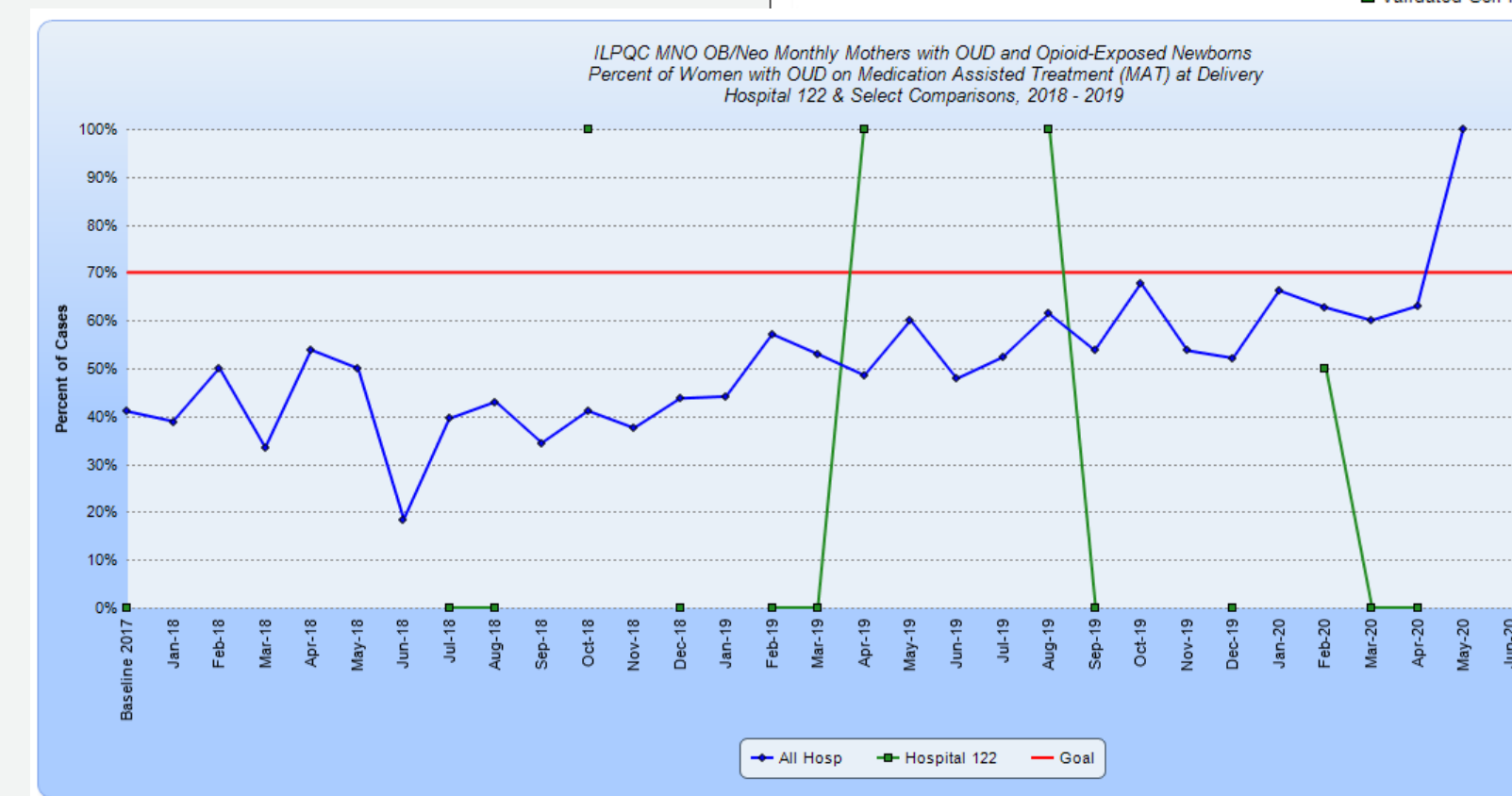


## 3. MNO-OB Data

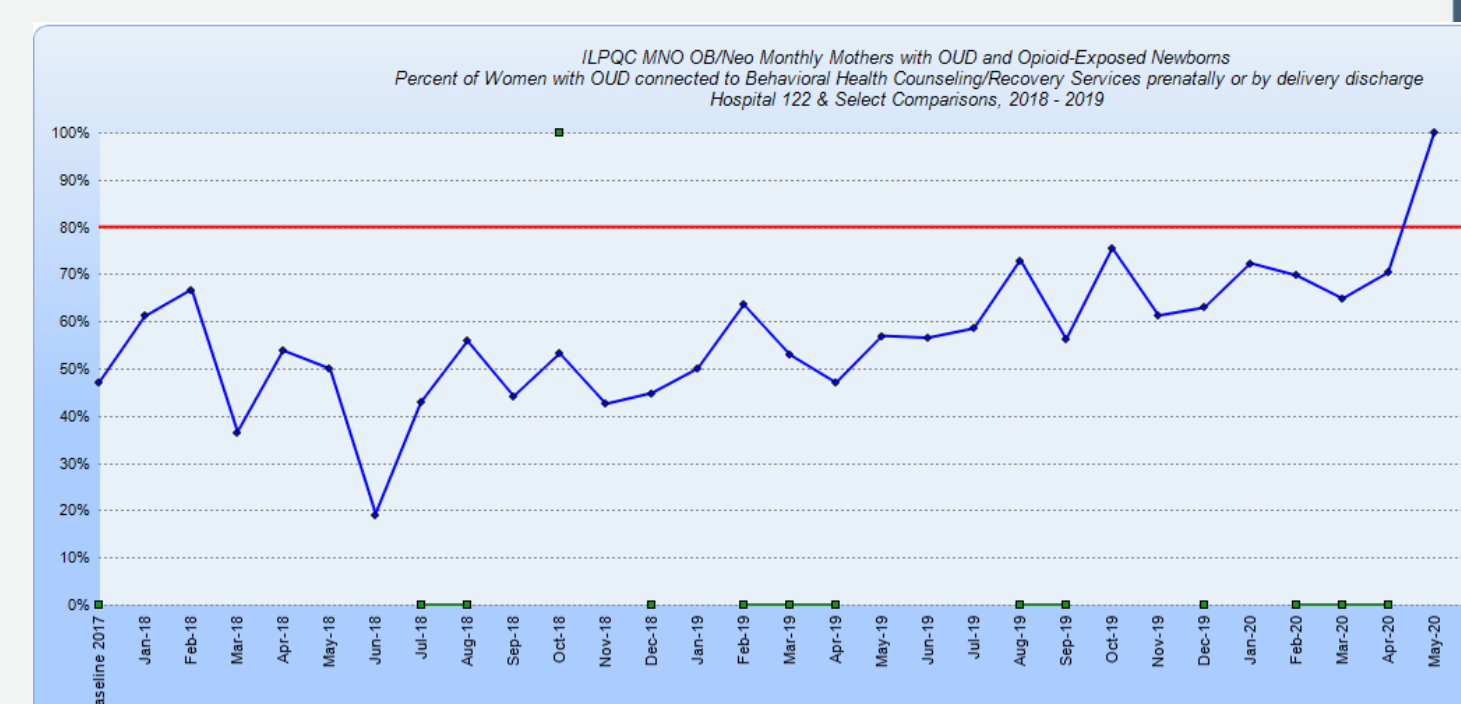
### Screening



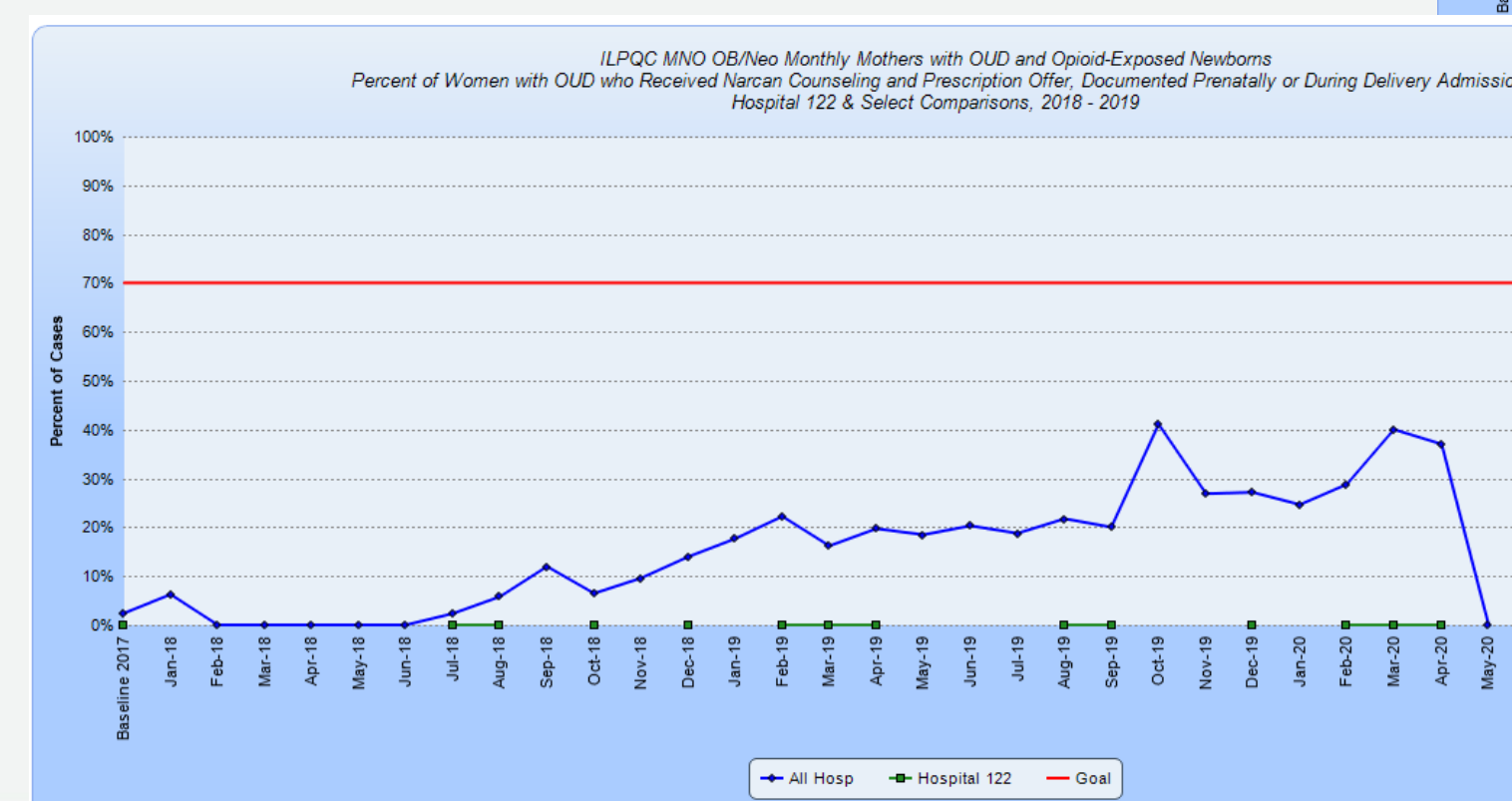
### MAT



### Recovery Program/Services



### Narcan



### Education Campaign

Donna Stephens, director of FCBC, did her doctoral project on opioid use disorder in pregnancy. She developed resources for the mothers, educated the nursing staff on these resources and how to care for the mothers and newborns affected by opioid use disorder.

### Monthly Review of all OUD Cases

QI team will review all OUD cases and reports to leadership team any successes or improvements needed.

## 6. PVB

### Family Care Birthing Center Team

Director: Donna Stephens

Nurse Manager: Natosha McEvers

ANM: Kelly Harre & Alexis Deutsch

Educator: Angela Mann

QI: Natosha McEvers, Desi Davies & Mona LeGrand

<Hospital Logo>

<Hospital Name>

Use this space for overflow and additional information your team would like to share.